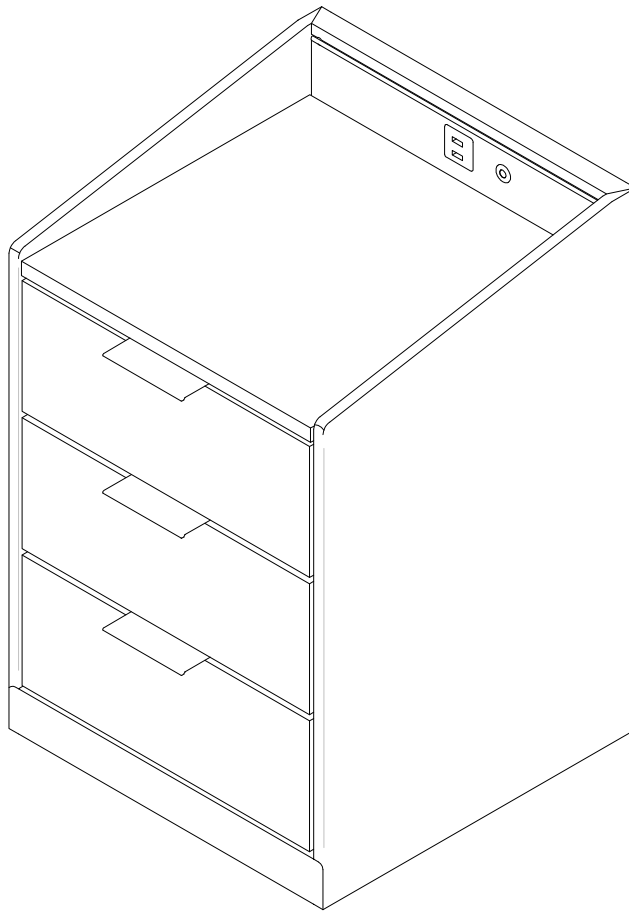


Parmer Bedside Chest



1/2 hour approx
assembly time



One person
assembly

Dreams

Thank you

Hello, thanks for choosing to purchase your bed from Dreams - you're now on your way to your best ever night's sleep. Before you begin building your bed, please take a moment to read through the instructions and make sure that you've got all the relevant parts listed on the following pages.



Assembly tips

Before you begin, it's best to identify all parts and fittings to build your bed. We advise laying these out on the floor to check you have everything, and familiarising yourself before building.



Top tip

We recommend that you build your new furniture in the room you'd like it to be located - this will help prevent any risk of damage to your newly built bed whilst moving it.



Safety and care

It's really important to ensure children and animals are kept away from the assembly area, as there are small components used in this bed which could present a choking hazard. All plastic and wrapping materials should also be kept away from children and animals to prevent any risk of suffocation. To keep your little ones busy, there is a colouring page inside the back cover.



Help and support

At Dreams, it's our mission to give the whole nation a great night's sleep - this means that the quality of our products is of utmost importance to us. If there are any issues with your product or any missing parts, please visit our website at www.dreams.co.uk/help



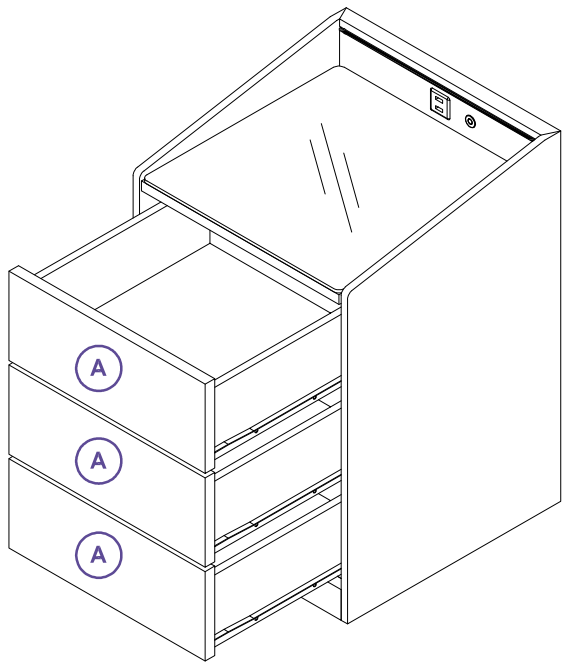
Recycling

Please ensure that packaging is disposed of in a safe and environmentally friendly way, and recycle where possible. Our assembly instructions are printed on recycled paper. Please keep your assembly instructions safe to refer back to in the future.

Parts

Important information

Please identify which base you have purchased with your bed frame as the assembly method may change. Once you have identified you have all of the relevant parts and fittings, please follow the instructions for your chosen base below;



Parts list

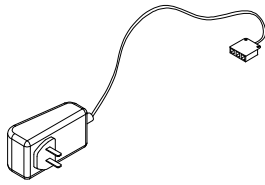
- A.

Drawer unit

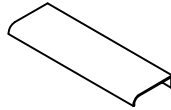
☐

Fittings

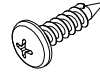
Please check you have all the parts listed below with your product:



(B) AC Adaptor
x1 pcs



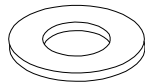
(C) L Shape Handle
x3 pcs



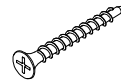
(D) Handle Screw
x6 pcs



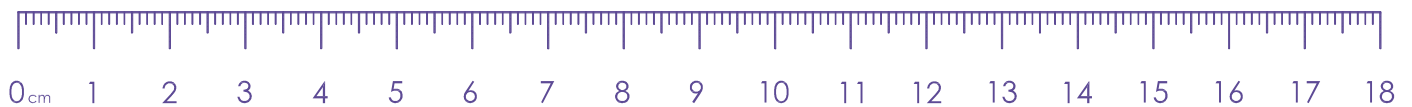
(E) Safety Strap
x1 pcs



(F) Flat Washer
x2 pcs



(G) Rattan Screw
#8 x 3/4"
x1 pcs



Tools required

Please check you have all these below:



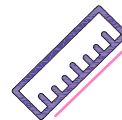
Flathead
screwdriver



Scissors



Spanner



Tape measure



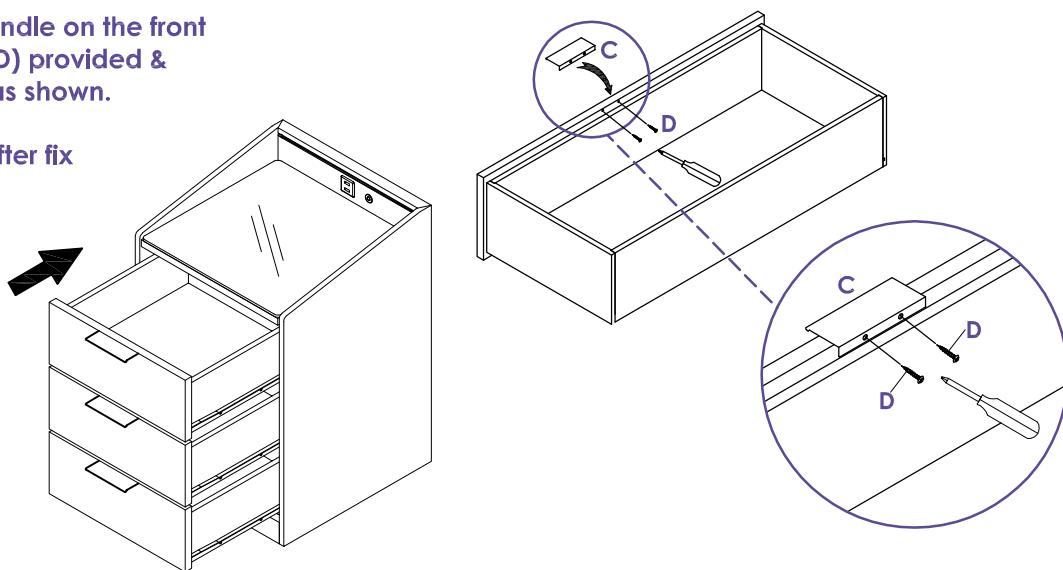
Cross head
screwdriver

'L' Handle Assembly

1

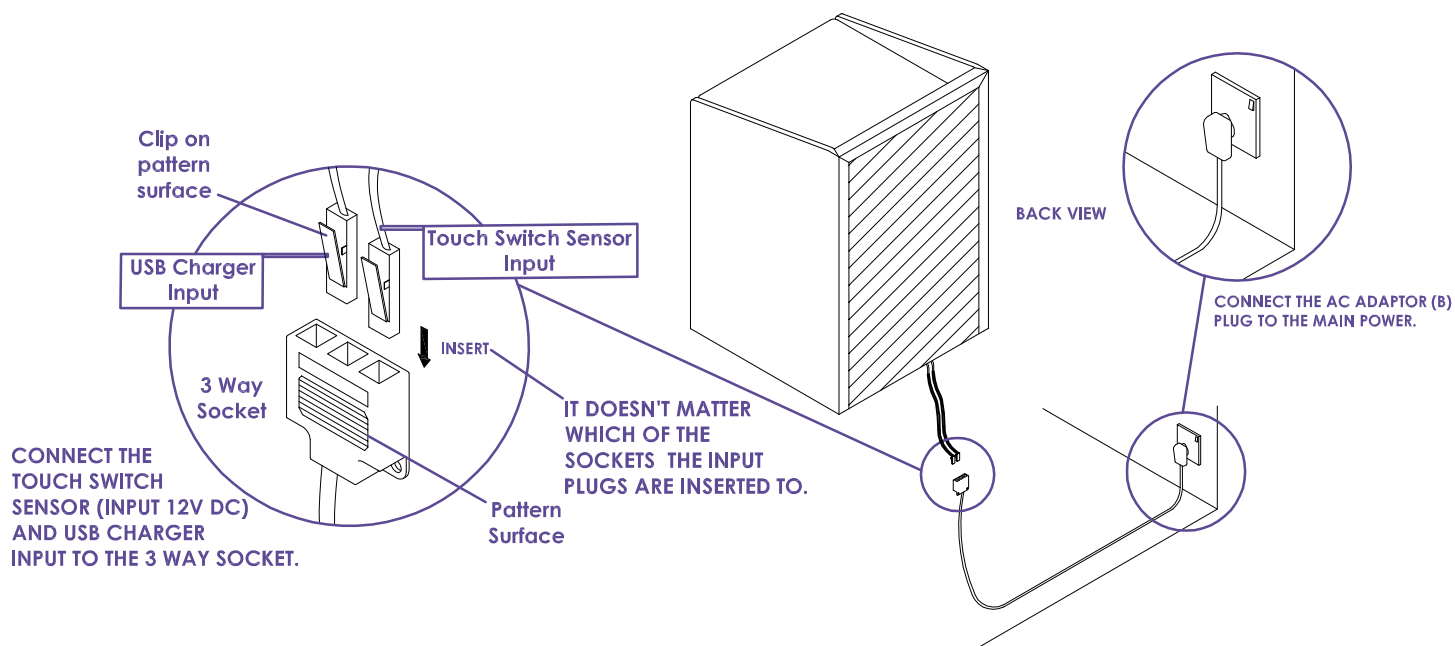
Pull out the drawers. Fix the handle on the front of the drawer. Use the screw (D) provided & tighten using the screwdriver as shown.

Push the drawer back inside after fix the handle.



Cable Management Assembly

2



'Touch Switch Sensor Guideline

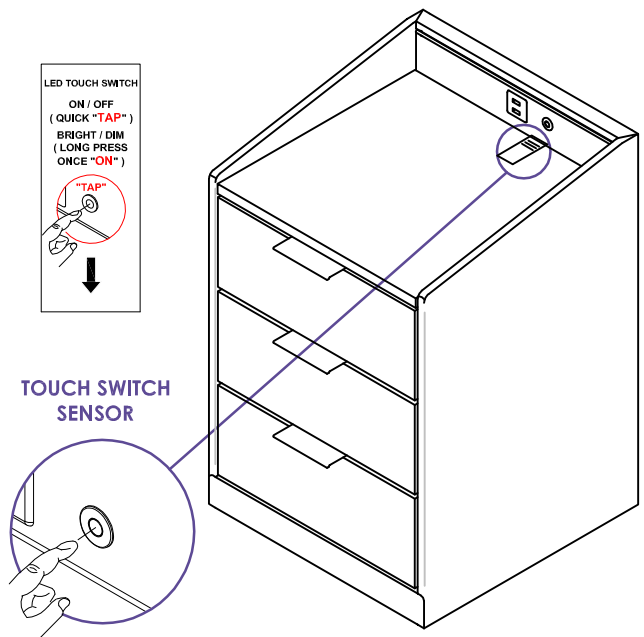
3

TOUCH SWITCH SENSOR FUNCTION USER GUIDE:-

1. Make sure all the cable connections are correct.
2. Switch on the main power supply.
3. To turn on/off the LED light, use the touch sensor beside the USB Charger.

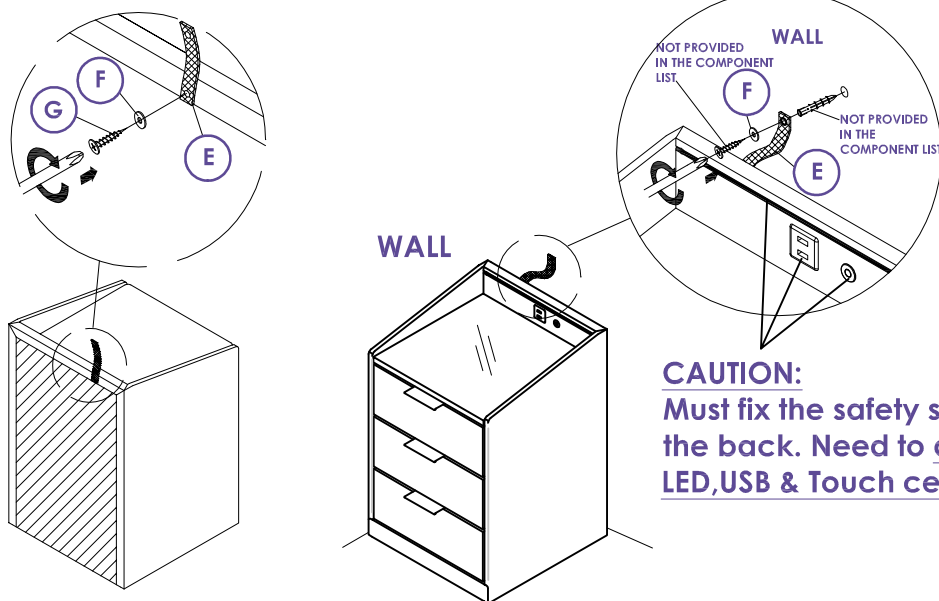
TOUCH SWITCH SENSOR ADJUSTING LED LIGHT (BRIGHTNESS / DIMMED) USER GUIDE :-

1. Touch the switch sensor to switch on the LED light.
2. Again press and hold the touch switch to increase or decrease the brightness. (Note: continue to press the touch switch to increase brightness, release and continue to press the touch switch to decrease the brightness).
3. The LED light will automatically set the memory to the last setting.



Safety Strap Assembly & Final Touch

4



CAUTION:
Must fix the safety strap at the back. Need to avoid from LED, USB & Touch censor.

WARNING:

To prevent your furniture from tilting forward and possibly causing property damage or personal injury it is recommended that you

Securely attach the safety strap provided to your wall using appropriate fixings

IMPORTANT:

- DO NOT place toys or other child appealing items on top of this furniture
- AVOID fully opening all drawers at the same time
- DO NOT ALLOW Small children to climb onto Drawers, shelves or to swing from open doors

CAUTION:

For your safety when attaching the anti-tilt fixings;

- Check for any electrical wires or plumbing inside the wall before drilling any holes (if you are unsure please seek professional advice from a qualified tradesman)
- Walls are constructed from different materials eg: Masonry (solid brick) or plaster board lined cavity walls (hollow).

It is important that you use the appropriate wall fixings for your wall type.

(Your local hardware store will have the necessary drills and fixings and can offer advice if needed)

TROUBLE SHOOTING

- The USB socket does not charge a USB device.

Questions	Answer	Corrections
Is there a 'Blue circular power LED light' illuminated at the USB charge socket, when a device is connected to it?	Yes _____ No _____	<ul style="list-style-type: none"> * If the blue LED light is illuminated- this means the USB charge socket is functional and distributing power up to 1amps at 5 volts. * Please try an alternative device and charge cable.
LED light no function?	No _____	<ul style="list-style-type: none"> * Please check/ ensure 1. The power adaptor plug (B) is firmly connected to a working 'switched on' mains 240v power supply. (See page 2 for detail) 2. The connector of the USB charger is firmly connected to the 3 way socket. (See page 2 for detail) 3. The USB power cable is working & the device is able to take a charge (test cable and device in an alternative charge point) * All steps have been followed and the issue still remains, please contact techsupport@bssbfurnitureinnovation.com with purchase information.

SPECIFICATION

MODEL	POWER ADAPTOR - 3WAY SOCKET - AU PLUG
INPUT	90~240V AC50/60Hz
OUTPUT	12V DC MAX 24W

MODEL	DOUBLE USB CHARGER
INPUT	12V DC
OUTPUT	5V DC : MAX 1A

MODEL	MINI TOUCH SWITCH
INPUT	12V DC
OUTPUT	12V DC : MAX 1A

MODEL	LED LIGHT
INPUT	12V DC



Comforms To : CE_Power Adaptor in UK/ EU (LVD + EMC + RoHS):

-EN 61347-1 : 2015 ; EN 61347-2-13:2014+A1:2017 ; EN62493:2015 ; AfPS GS 2014:01 Par. 3.1

CE_LED Strips:

EN 55015:2013+A1 ; EN 61547:2009 ; EN 61000-3-2:2014 ; EN 61000-3-3:2013

CE_Touch Switch Sensor:

EN 55015:2013+A1:2015 ; EN 61547:2009 ; EN 61000-3-2:2014 ; EN 61000-3-3:2013

CE_Double USB Charger:

EN 55015:2013+A1:2015 ; EN 61547:2009 ; EN 61000-3-2:2014 ; EN 61000-3-3:2013

CE_Power Chord:

AS/NZS 3112:2011

CE_Tempered Safety Glass (SIRIM QAS International Sdn. Bhd.):

-BS EN 12150-1:2000



Little dreamers

Keep the little ones entertained while you assemble your new purchase.



Dreams

A pink wavy line that underlines the word "Dreams". It starts with a small upward curve on the left, dips into a shallow wave in the middle, and then rises with a small upward curve on the right.