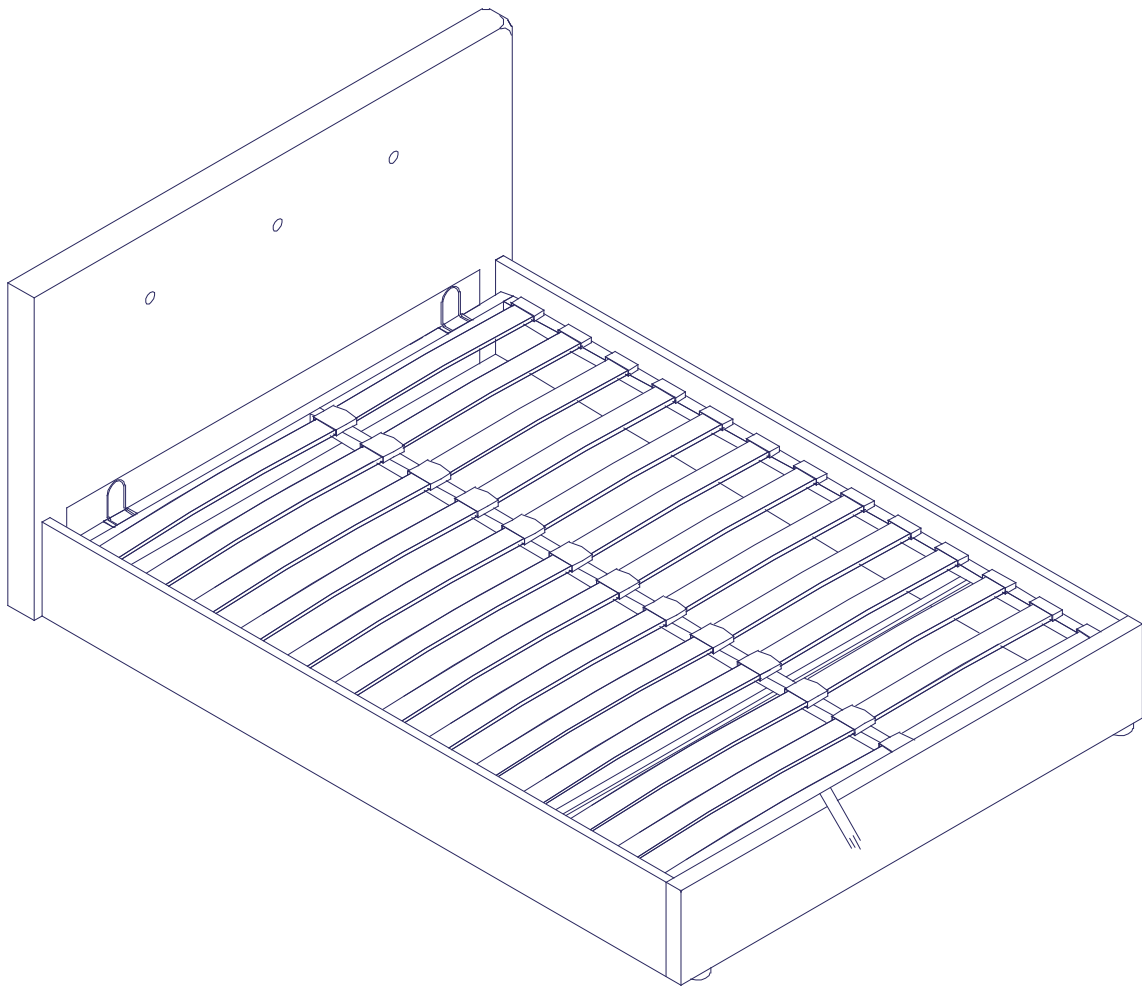


Lamplugh Bed



1 hour approx
assembly time



Two person
assembly

Thank you

Hello, thanks for choosing to purchase your bed from our company- you're now on your way to creating a practical and stylish solution for your room. Before you begin building your bed, please take a moment to read through the instructions and make sure that you've got all the relevant parts listed on the following pages.



Assembly tips

Before you begin, it's best to identify all parts and fittings to build your bed. We advise laying these out on the floor to check you have everything, and familiarising yourself before building.



Top tip

We recommend that you build your new bed in the room you'd like it to be located - this will help prevent any risk of damage to your newly built sofa bed whilst moving it.



Safety and care

It's really important to ensure children and animals are kept away from the assembly area, as there are small components used in this bed which could present a choking hazard. All plastic and wrapping materials should also be kept away from children and animals to prevent any risk of suffocation. To keep your little ones busy, there is a colouring page inside the back cover.



Recycling

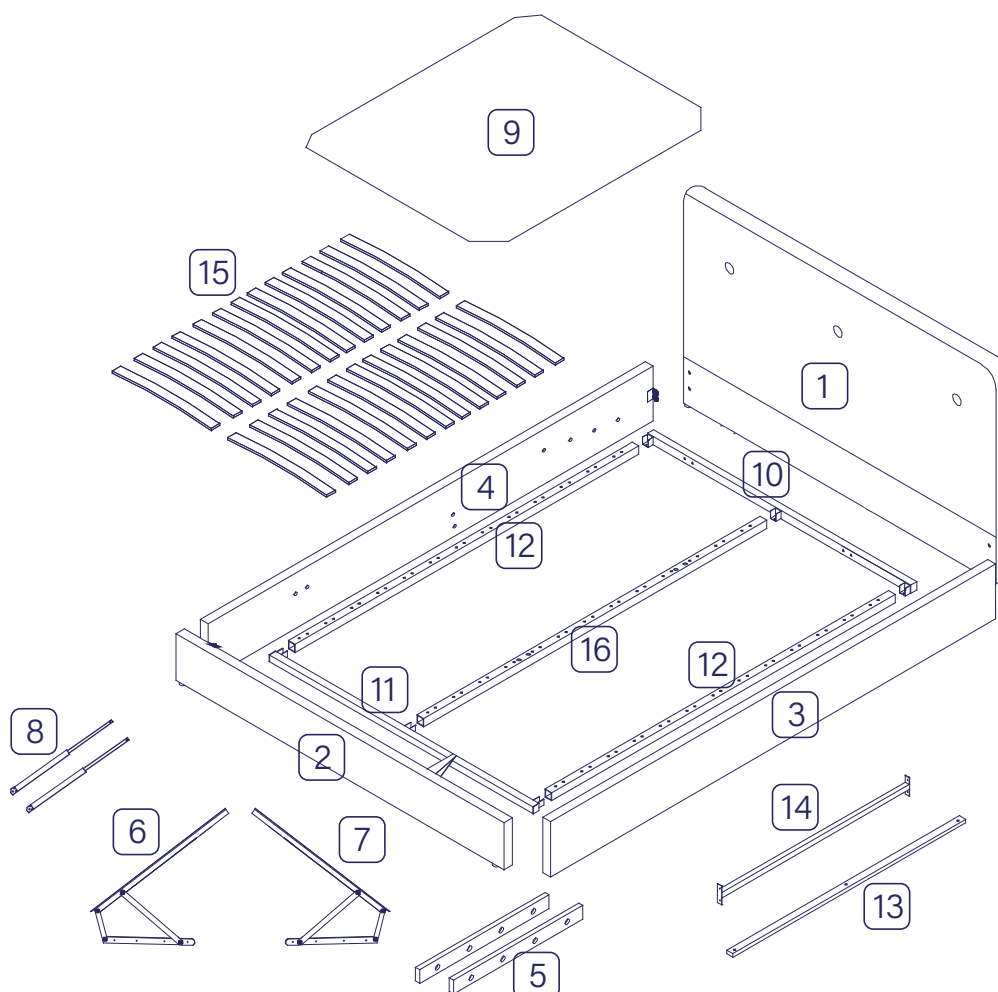
Please ensure that packaging is disposed of in a safe and environmentally friendly way, and recycle where possible. Our assembly instructions are printed on recycled paper. Please keep your assembly instructions safe to refer back to in the future.

Important Ottoman Safety Warnings

1. Caution. This bed uses a pressurised mechanism.
2. Use caution when operating - Always use two hands at arms length, and only where illustrated on the product.
3. you must ensure the mattress is on the bed frame before lifting the mechanism.
- Failure to do so may result in injury.
4. Please ensure Children and Pets are kept away from the bed when operating the bed mechanism.
5. If removing the mattress, make sure that the frame is secured as it could flip open.
6. Only use the storage compartment when the frame is fully raised in the 'up' position.
7. No children or animals are left unattended when the frame is in the 'up' position.
8. Do not remain on the bed whilst the lifting mechanism is in use
9. Beware of Entrapment - Keep both hands clear of mechanism when operating the mechanism.
10. When lifting the bed remove all bedding - Except the fitted sheet.
11. Depending on the weight of the mattress, the rising speed will vary so be careful until you get used to the speed.
12. Always use the strap to lift or lower the frame -keep fingers well away from the moving parts.
13. NOTE:When fully assembled and the mattress is in position, please raise and lower the ottoman 4/5 times to ensure the gas pistons are fully lubricated.



Parts



Parts list

1.	Headboard x 1 pc	<input type="checkbox"/>	9.	Fabric base x 1 pc	<input type="checkbox"/>
2.	Footboard x 1 pc	<input type="checkbox"/>	10.	Support block on headboard x 1 pc	<input type="checkbox"/>
3.	Left siderail x 1 pc	<input type="checkbox"/>	11.	Support block on footboard x 1 pc	<input type="checkbox"/>
4.	Right siderail x 1 pc	<input type="checkbox"/>	12.	Metal side support rail x 2 pcs	<input type="checkbox"/>
5.	Wooden supporting block x 2 pcs	<input type="checkbox"/>	13.	Metal centre cross rail x 1 pc	<input type="checkbox"/>
6.	Left Gas lift mechanism x 1 pc	<input type="checkbox"/>	14.	Metal centre cross x 1 pc	<input type="checkbox"/>
7.	Right Gas lift mechanism x 1 pc	<input type="checkbox"/>	15.	Slat x 13 pcs	<input type="checkbox"/>
8.	Gas piston x 2 pcs	<input type="checkbox"/>	16.	Metal middle support rail x 1 pc	<input type="checkbox"/>

Assembly

Fittings

Please check you have all the parts listed below with your product:

(A) x 41



Bolt (M8 x 25mm)

(B) x 16



Bolt (M8 x 45mm)

(C) x 65



Flat Washer

(D) x 4



Nut (M8)

(E) x 8



Nut (M8)

(F) x 1



Allen Key

(G) x 1



Spanner

(H) x 4



Brackets

(I) x 2



Metal block

(J) x 26



End cap

(K) x 1



Center connector

(L) x 1



Centre support leg



Tools required

Please check you have all these below:



Tape measure



Scissors

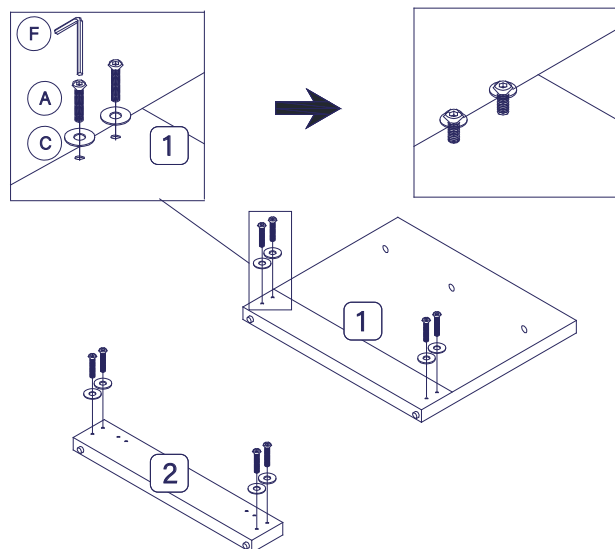
Assembly

1

BED FRAME ASSEMBLING

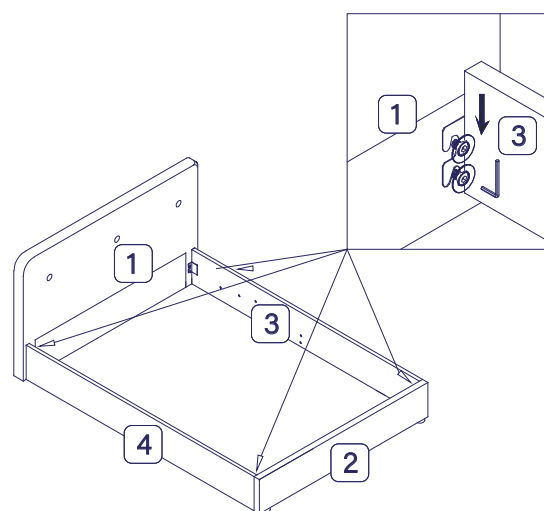
Loosely insert bolts (A) into each side of headboard (1) and footboard (2).

Note: Do not tighten fully but leave 10mm protruding.



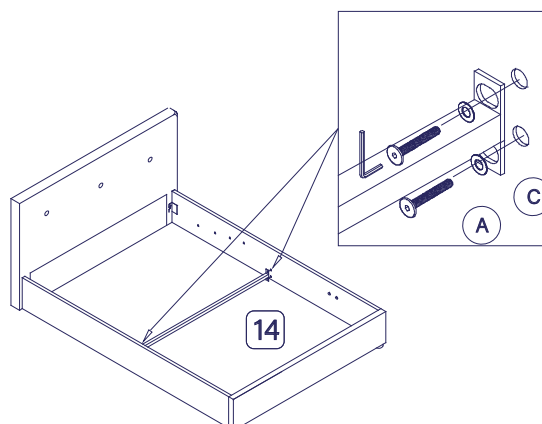
2

Attach the siderails (3) & (4) to the headboard (1) and footboard (2). Make certain the bed is squared up, then tighten all bolts fully.



3

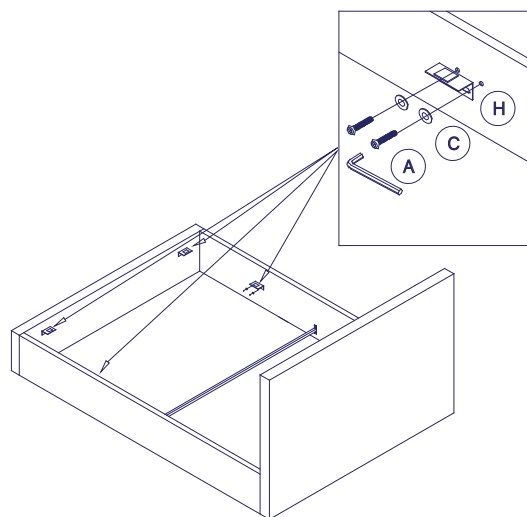
Attach the metal centre cross (14) to the siderails, then fully tighten all bolts.



Assembly

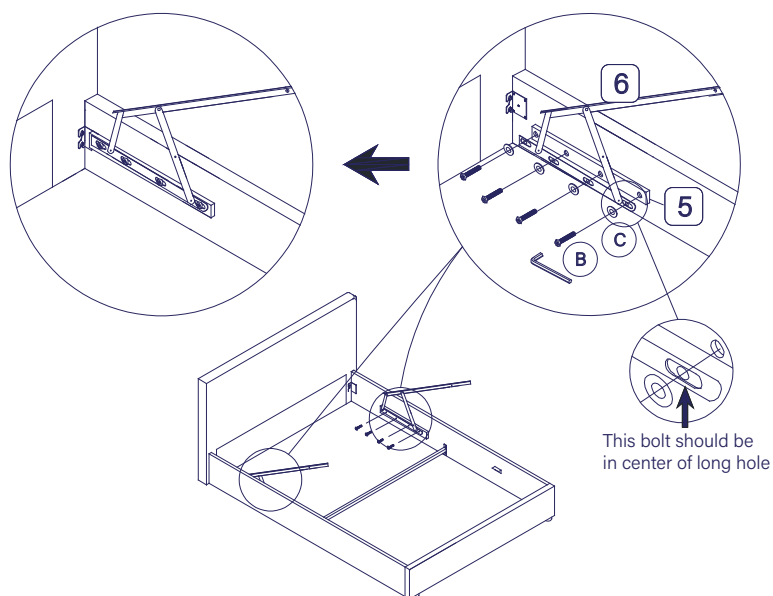
4

Assembling the brackets, fully tighten the bolts.



5

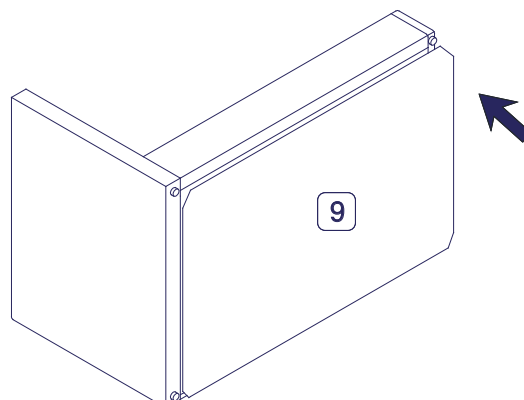
Attach part (5) and (6) to the left siderail (3), another side attach part (5) and (7) to the right siderail (4).



6

Turn the bed on its side and attach the fabric base (9) to the bottom of the side rails, headboard and footboard.

Note: Make sure the fabric is fixed evenly all around.



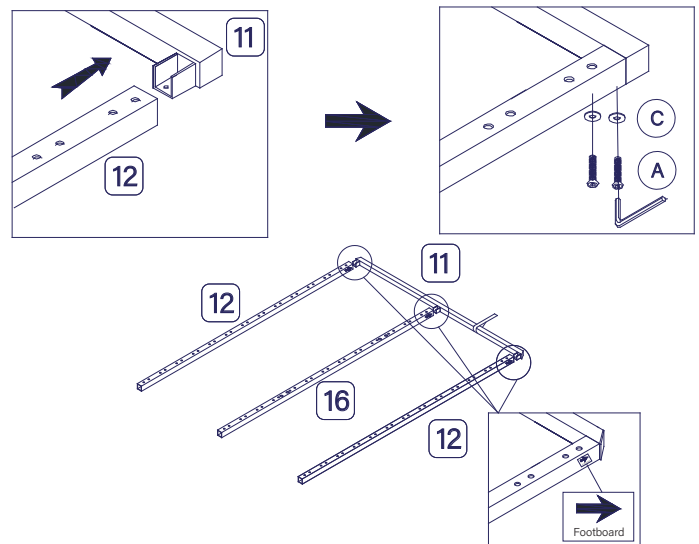
Assembly

7

SPRUNG ASSEMBLING

Attach the part (12) to part (11).

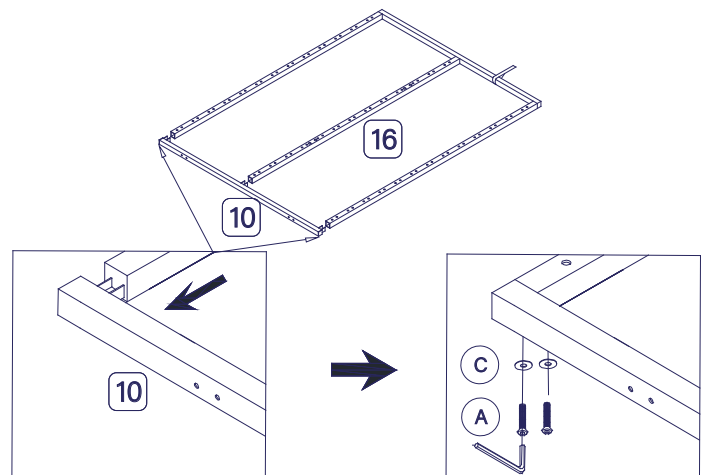
Note: The side of part (12) with a label closed to part (11), and part (11) closed to the footboard.



8

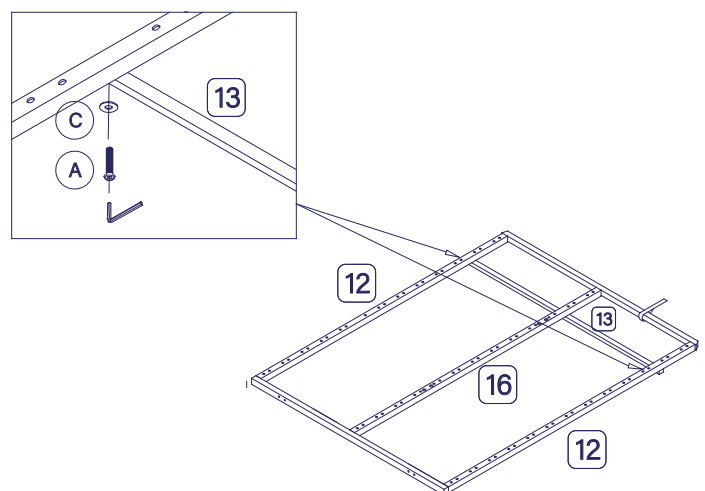
Attach the part (12) to part (10).

Note: The part (10) closed to the headboard.



9

Attach the part (13) to part (12) on the bottom.

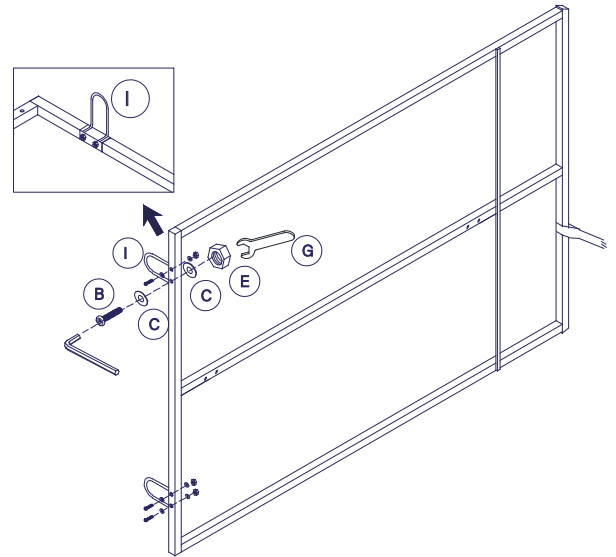


Assembly

10

Attach metal block to part (10) on top of sprung frame.

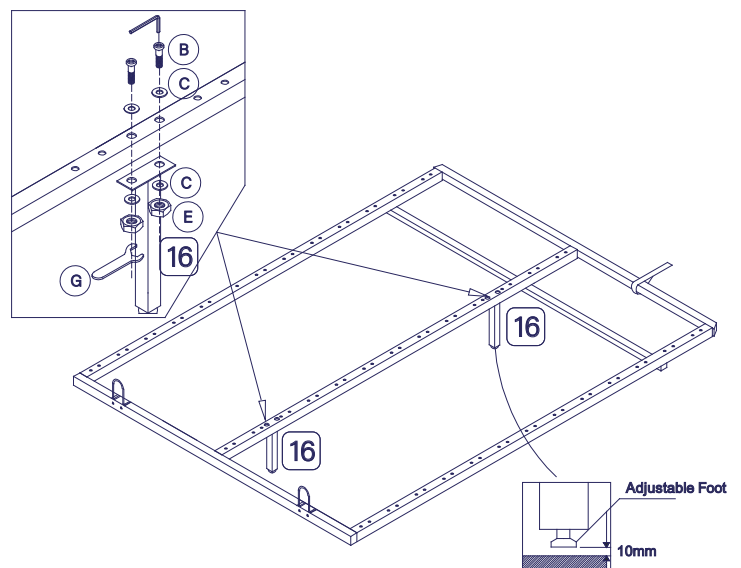
Note: the side with metal block closed to headboard.



11

Attach part (16) to sprung center rail.

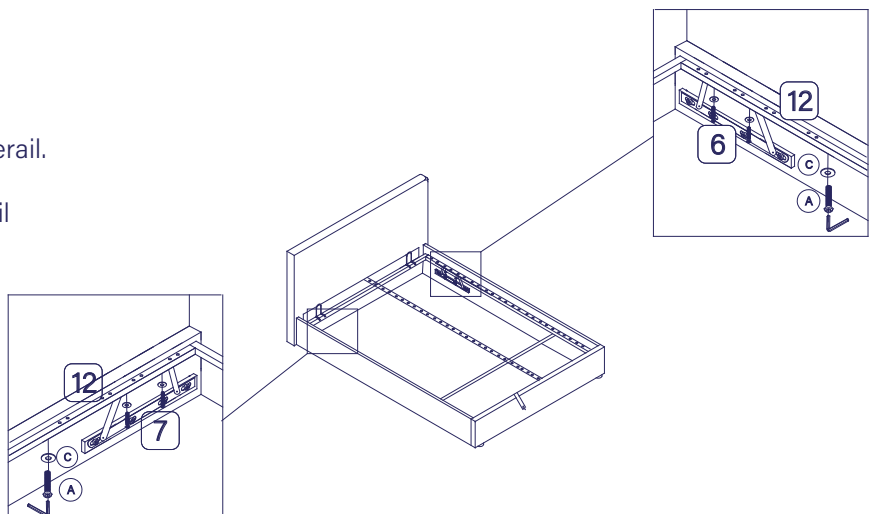
Note: Fit the adjustable foot when fully assembled, See the sketch.



12

Attach part (6) to sprung siderail, another side attach part (7) to sprung siderail.

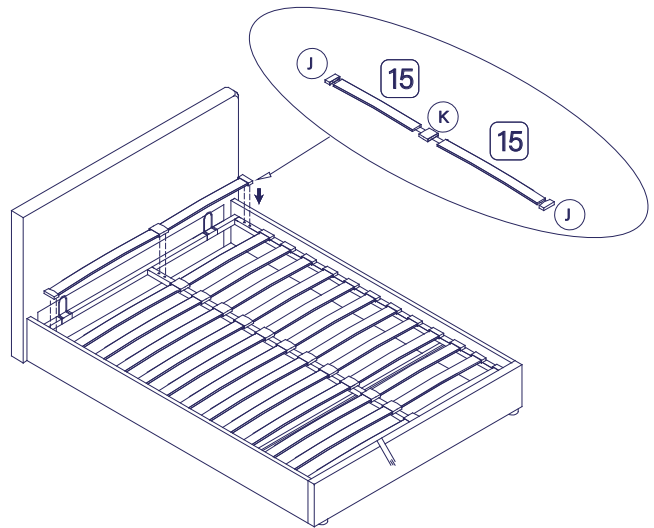
Note: Insert all bolt (A) into sprung siderail
Tighten all the bolts after confirming the sprung frame is in correct position.
Frame must be in the center of bed in length & width.



Assembly

13

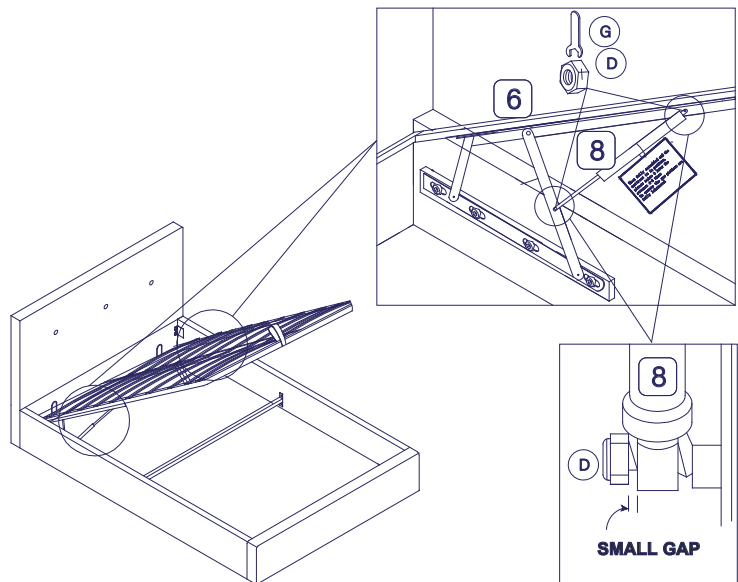
Put the sprung frame on the lift mechanism,
Press the end cap into slat, then press whole slat to
sprung siderail.



14

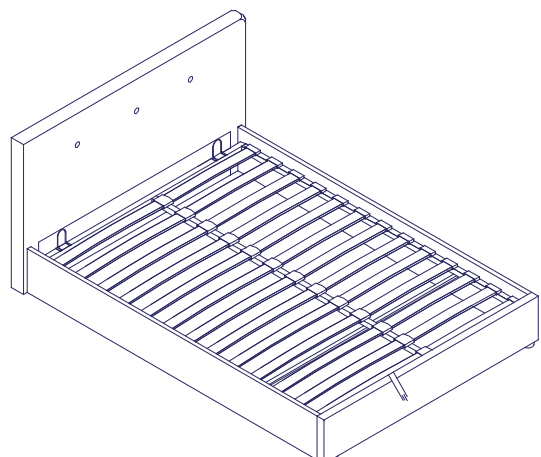
Lift up the slat frame, use the locking nut (D) to
fit the pistons to the lift mechanism.

Note: A small gap is left so stem can move freely.
This is normal, See the sketch.



15

When fully assembled and the mattress is in position,
please raise and lower the ottoman 4-5 times.
To ensure the gas pistons are fully lubricated.



Care and maintenance

Here are some tips to keep your new bed in tip-top condition



Cleaning

To clean your new bed, we'd advise using a warm damp cloth - please do not use abrasive chemicals or bleach as this may damage the product.



Checking and moving

Periodically we recommend you check that the screws or fixtures haven't become loose, over time. To move your new bed, we recommend lifting it where possible, as dragging or pushing it could cause damage to your flooring.



Wood

Please note each of our wooden pieces are unique, meaning that markings and shade can vary slightly between beds. Over a period of time, the wood might lighten or fade slightly due to light exposure.



Fabric

Please note depending on the lighting, positioning and surroundings of your room, the shade of the colour can sometimes appear slightly different. Over a period of time, the colour might lighten or fade slightly due to light exposure.



Metal

Metal tends to be more resilient to everyday wear and tear. We recommend to gently dust your metal furniture and keep it dry to maintain its look.

Thank you for shopping with us - we hope you have a great night's sleep

Sleep well



Little dreamers

Keep the little ones entertained while you assemble your new purchase.

