

PLEASE READ this sheet prior to assembly to familiarise yourself with the various stages of construction. Carefully open the pack supplied and check the contents against the parts and fittings check list.

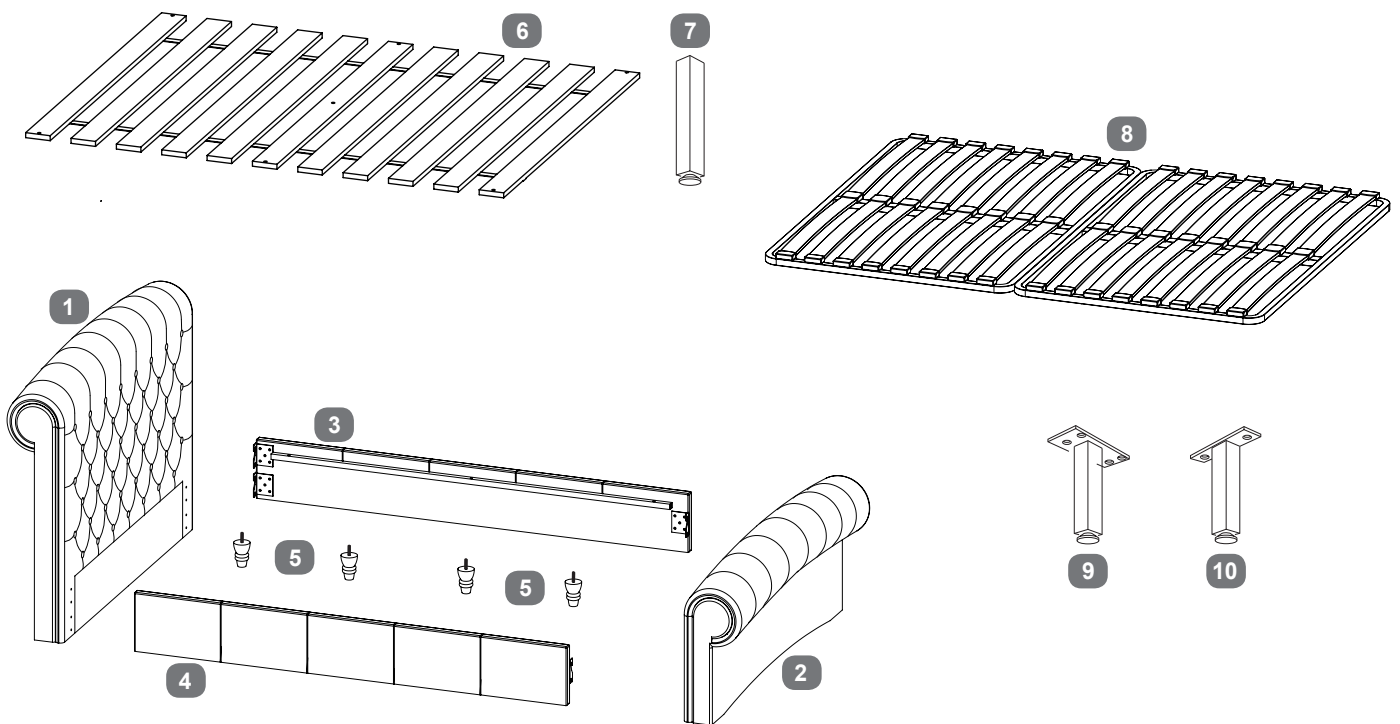
Do not destroy any of the packaging until you are certain that you have all the necessary parts for the assembly.

Please ensure that the packaging is disposed of in a safe environmentally friendly way.

CAUTION: There are small components used in the construction of this unit. These loose items should be kept away from young children during assembly, to avoid the danger of choking.

**IMPORTANT: BEFORE STARTING TO ASSEMBLE THE BED - PLEASE READ THESE INSTRUCTIONS CAREFULLY.**

### Parts Identification



**Note:** Standard wooden slat frame (part 6)  
Upgraded sprung slat frame (part 8)

### Parts Checklist

Ref.	Description	Qty	Ref.	Description	Qty
1	Headboard	1	6	Wooden Slat Set	1
2	Footboard	1	7	Wooden Slat Set Support Leg	1
3	Side Panel - Left	1	8	*Upgraded Sprung Slat Frame*	1
4	Side Panel - Right	1	9	*Sprung Slat Frame Centre Support Leg*	1
5	Feet	4	10	*Sprung Slat Frame Support Legs*	2

\* Only supplied if upgraded sprung slat frame system chosen Legs (9&10) only supplied with sprung system

## Fittings Checklist

### HARDWARE NEEDED FOR BED ASSEMBLY (PACK A)

Code	Description	Qty	Code	Description	Qty
A	Bolts (M8x30mm) for fitting side panels (3&4) to headboard & footboard (1&2)	x12	C	Flat Washers (for M8 bolts)	x12
B	Spring Washers (for M8 bolts)	x12	D	Allen Key (for M8 bolt)	x1

### HARDWARE FOR FITTING WOOD SLATS OR UPGRADED SPRUNG SLAT FRAME (PACK B)

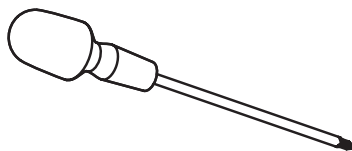
Code	Description	Qty	Code	Description	Qty
E	Bolts (M6x40mm) for fitting the wooden slat set (6) or the sprung slat frame (8) to side panels (3&4)	x6	H	Allen Key (for M6 bolt)	x1
F	Sleeve Nuts - M6	x6	J	Screw (5x50mm) for fitting slat support leg (7)	x1
G	Flat Washers (for M6 bolts & 5mm screw)	x7	K	Spring Washers (for M6 bolts)	x6

### EXTRA HARDWARE NEEDED WHEN FITTING UPGRADED SPRUNG SLAT FRAME

**Note:** The following fittings will be found in the box which contains the upgraded metal frame itself.

L	Bolts (M6x15mm) for fitting support legs (9&10) to the sprung slat frame (8)	x8	9	Sprung slat frame centre support leg	x1
10	Sprung slat frame support legs	x2			

### Additional Tools Required



Cross-head Screwdriver

### Care & Maintenance

In the unlikely event of missing or damaged parts, please contact the customer service team on 0344 292 00 00. When calling this number, please quote the part code reference numbers shown in this leaflet when requesting spare or replacement parts.

### General Hints & Tips



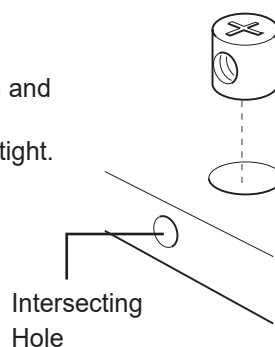
Please retain your assembly instruction and tools provided for future use. Periodically check that all bolts are still tight.

Assembly requires two persons.



1.0 HR

Approximate time to assemble this product



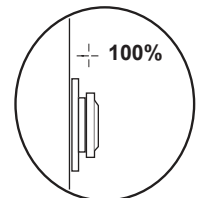
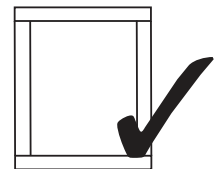
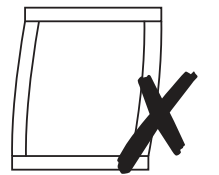
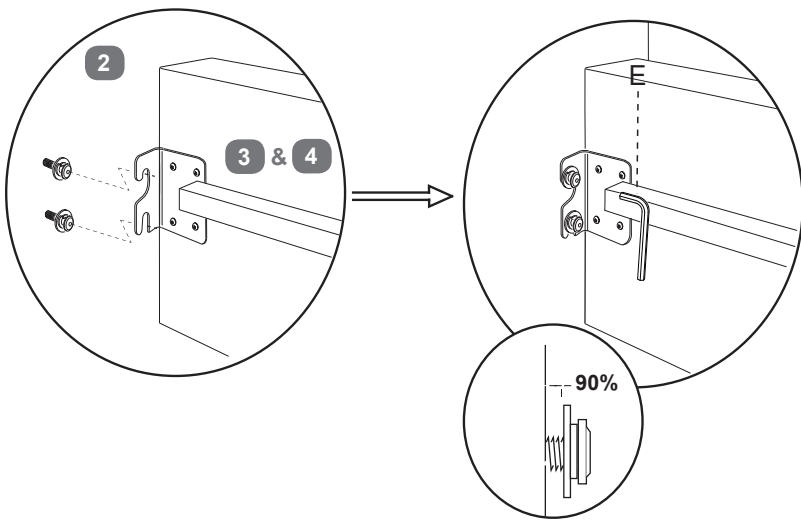
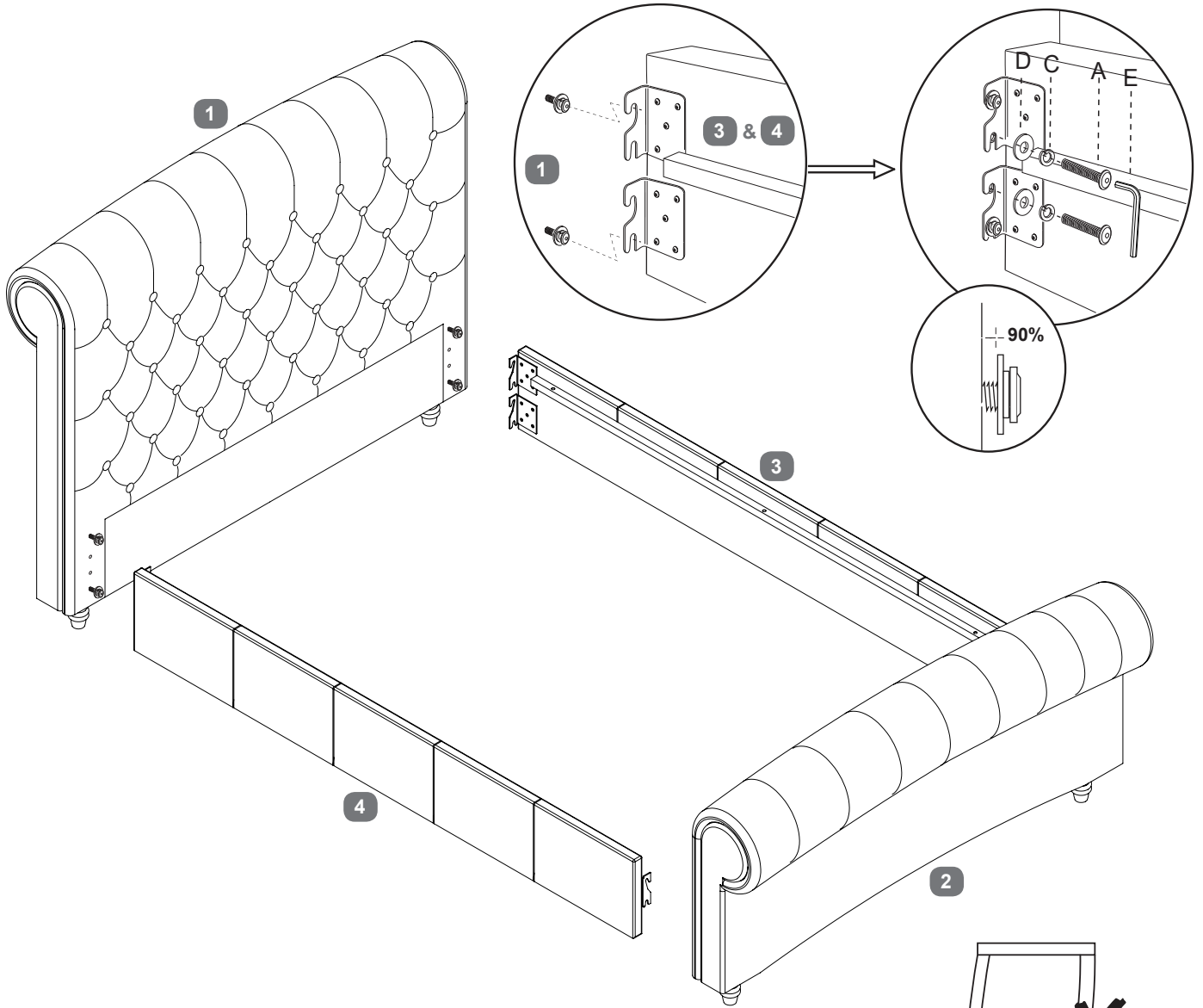
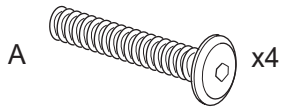
When they are supplied and are part of the assembly of this bed, ensure that the barrel nuts are fitted the correct way so the hole in the nut is facing towards the intersecting hole in the panel.

We recommend the bed is assembled in the room it shall be located in.



# Bed Assembly - Use Pack 'A'

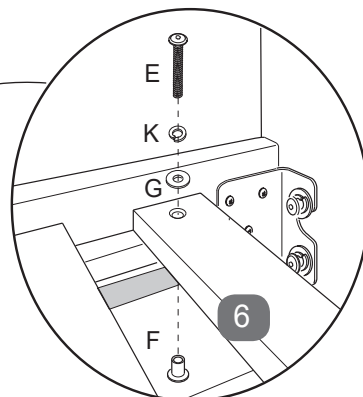
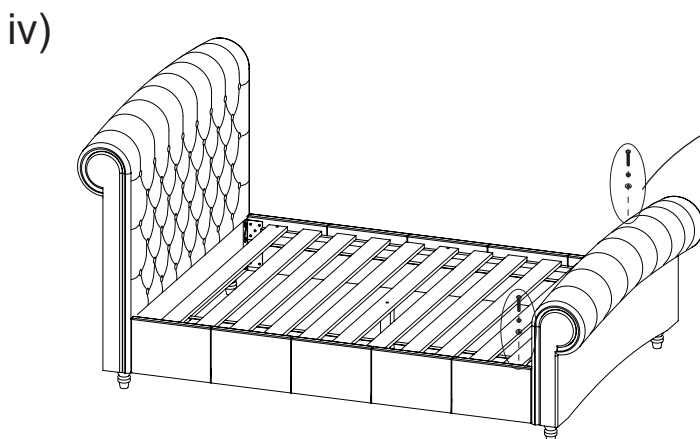
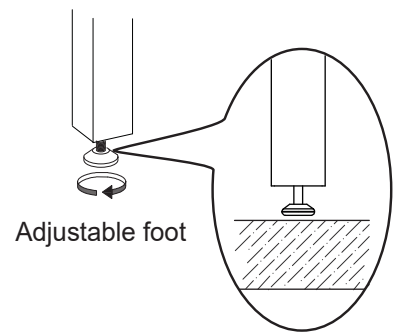
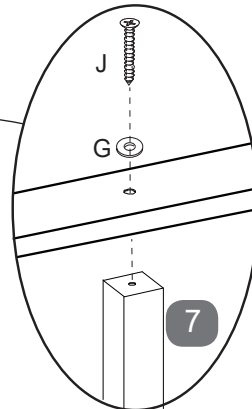
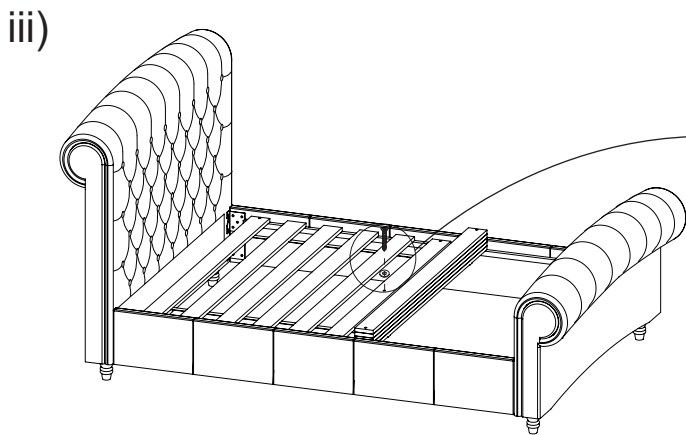
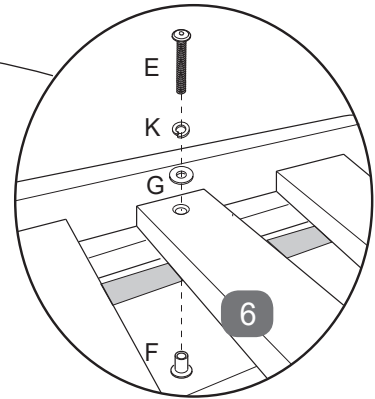
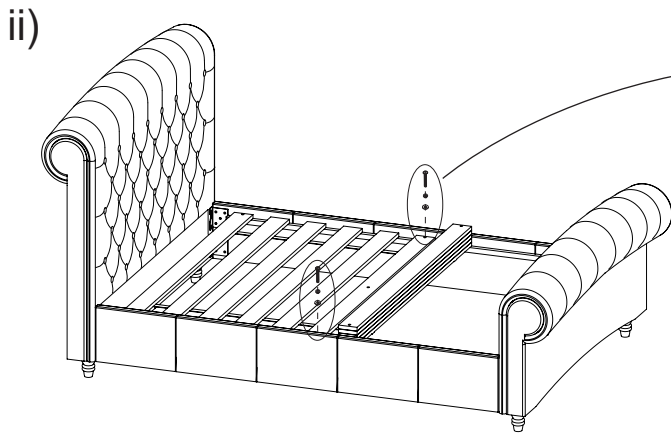
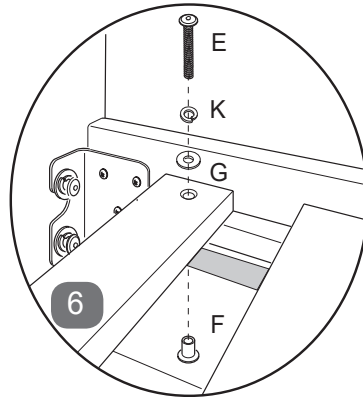
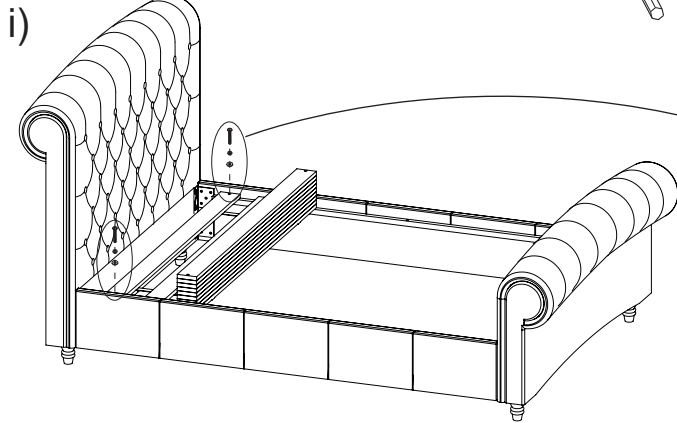
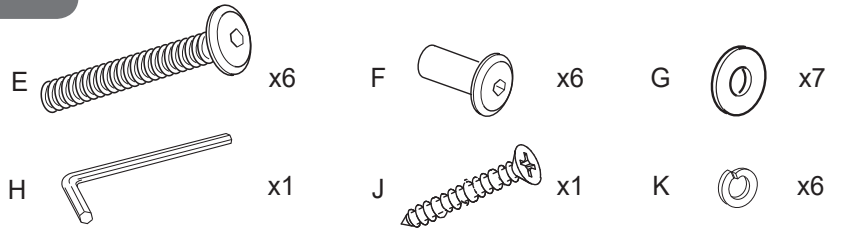
Stage  
2



# Fitting Wooden Slat Set - Use Pack 'B'

Stage  
3a

Carefully lay the wooden slat set on the metal supports, on each side panel.



# Fitting Sprung Slat Frame - Use Pack 'B'

Stage  
3b

