

Dreams

Attaching  
your  
headboard.

Please take a moment to read this guide – it contains instructions on how to attach your **strutted** or **floor standing** headboard to your divan or ottoman base.

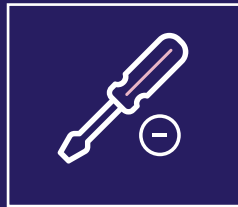
### Necessary tools



Two People



Sharp Pointed  
Scissors



Flat Head  
Screwdriver



Visit our online guide  
for further information

# Important information

---

## Cleaning instructions

If your headboard becomes marked from movement or use, marks may be removed using a damp cloth with cool water and a mild detergent. Avoid over wetting or scrubbing as this could further damage the upholstery or fillings.

## General advice

- Keep all packaging, tools, and fittings out of reach of children.
- Periodically check all fixings to ensure none have worked loose. Re-tighten as necessary.

## Product packaging

All Dreams Bed Factory packaging is 100% recyclable. We will take away all packaging at point of delivery. If you do not want us to do this, please check with your local recycling centre on the best recycling method.



## Attaching your strutted headboard

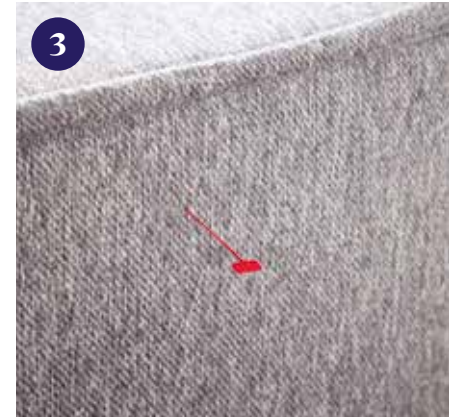
---



Remove accessories kit attached to headboard containing 2 bolts.



Lay the headboard on its front and locate the pre-pierced holes. Adjust the struts (legs) so they point downwards, aligning with the pre-pierced holes. Using a screwdriver, screw the struts into place until tight.



Locate the red plastic tags on the base. Consider carefully which end to pierce, particularly if your bed has storage that needs to be located in a specific position. **Only pierce the end you intend to attach the headboard to.**



Using the red plastic tags as guides, carefully pierce the fabric with a sharp pair of scissors, then insert the bolts (provided with your divan) into the pre-drilled holes.



Lift the headboard above the bolts, aligning the struts (legs), then lower the headboard down to the floor.



Once the mattress is in place, adjust the headboard height and secure the bolts until tight.

## Attaching your floor standing headboard

---



Remove the bolts from the accessories kit attached to your base.



Consider carefully which end of the bed to place the headboard, particularly if your bed has storage that needs to be located in a specific position.



Locate the red plastic tags on the base. Using them as guides, carefully pierce the fabric with a sharp pair of scissors. Clear enough of the fabric from the hole to allow the bolt to catch the screw thread. **Only pierce the end you intend to attach the headboard to.**



Line the headboard up with the holes. Whilst one person holds the headboard upright, the other can start to screw the bolts in to place.



Secure all bolts until tight to complete the assembly.



Your bed is now ready for you to position your mattress.

# Dreams

What Dreams are made of  
Handmade in the UK

Dreams Limited is registered in England and Wales. Company registration number: 08428347.  
Registered Office: Knaves Beech, High Wycombe, Bucks HP10 9YU

056137