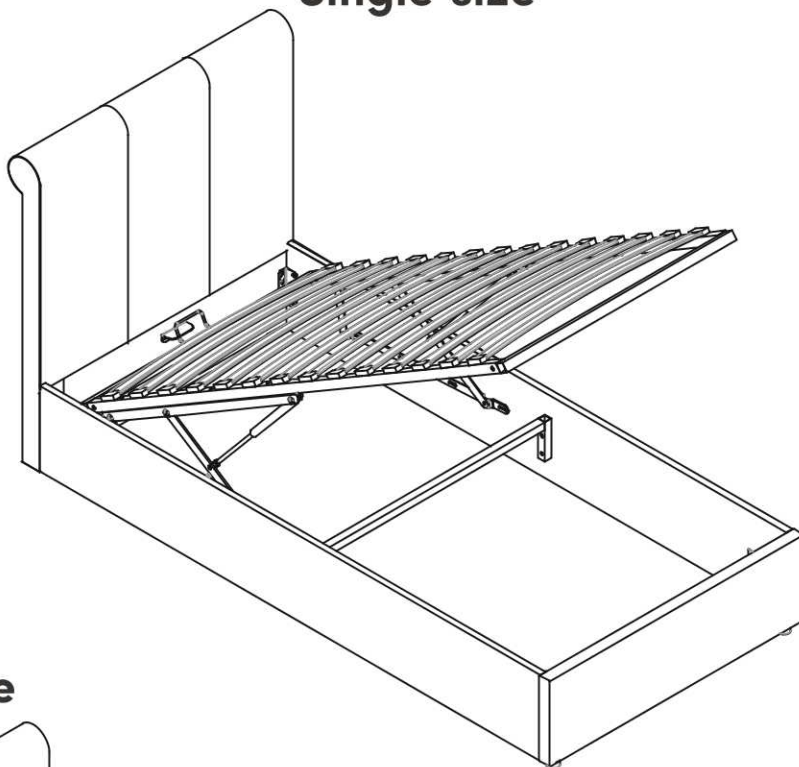
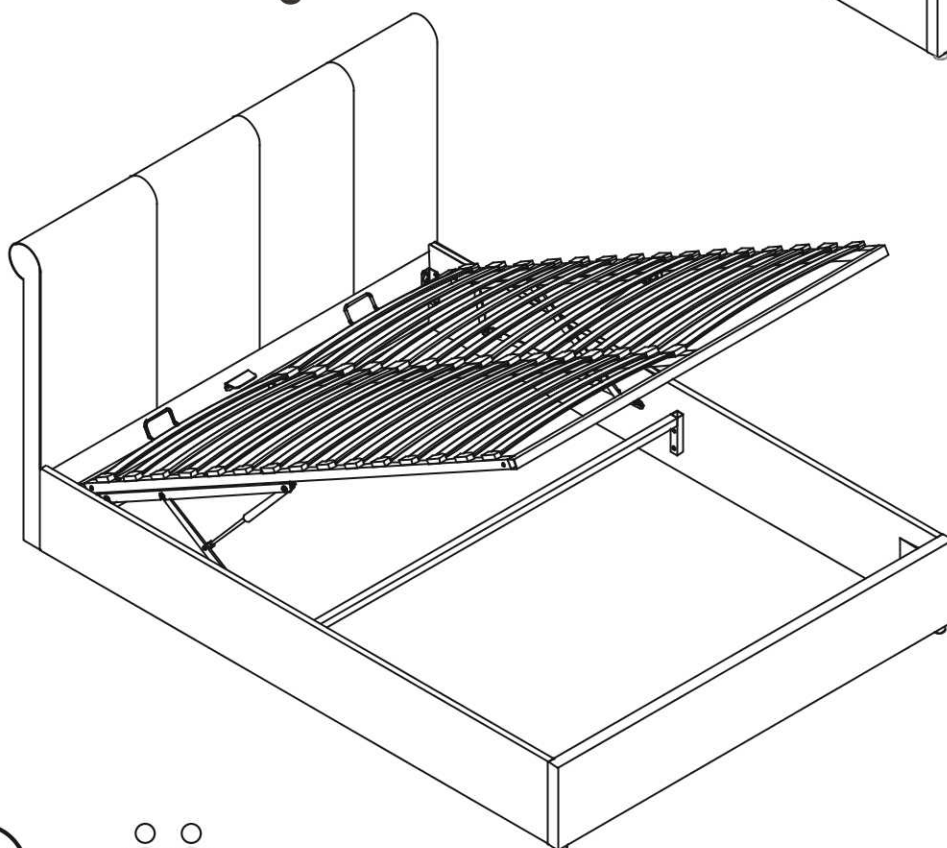


Couchman Ottoman Lift up Bed

Single size



Double & King size



1 hour approx
assembly time



Two person
assembly

Thank You

Dear Customer, Thank you for choosing to purchase your bed from our on-line store - we hope it brings you your best ever night's sleep. Before you begin building your bed, please take a moment to read through the instructions and make sure that you've got all the relevant parts listed on the following pages.



Assembly tips

Before you begin, it's best to identify all parts and fittings to build your bed. We advise laying these out on the floor to check you have everything, and familiarising yourself before building.



Top tip

We recommend that you build your new bed in the room you'd like it to be located - this will help prevent any risk of damage to your newly built bed whilst moving it.



Safety and care

It's really important to ensure children and animals are kept away from the assembly area, as there are small components used in this bed which could present a choking hazard. All plastic and wrapping materials should also be kept away from children and animals to prevent any risk of suffocation.



Help and support

It's our mission to give the whole nation a great night's sleep - this means that the quality of our products is of utmost importance to us. If there are any issues with your product or any missing parts, please contact our on-line Help Centre.

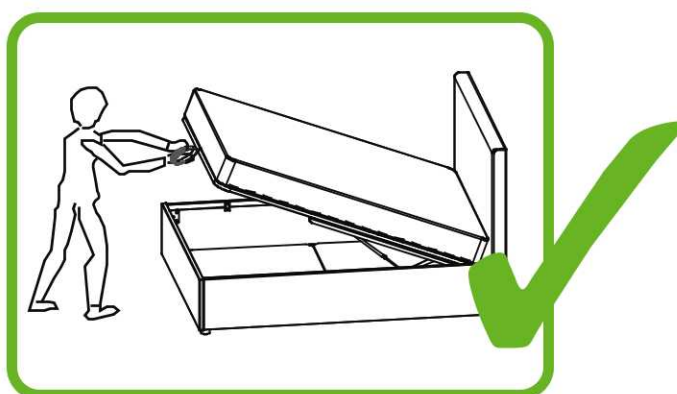
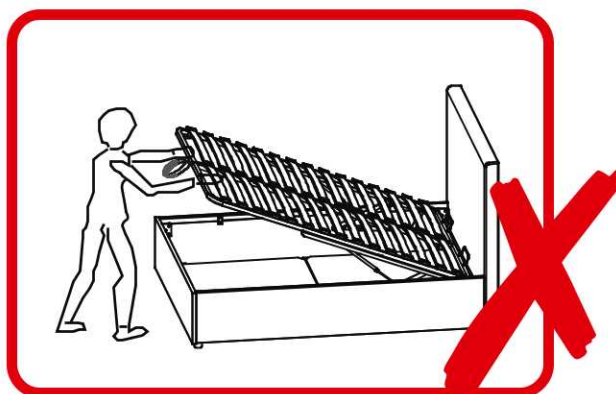


Recycling

Please ensure that packaging is disposed of in a safe and environmentally friendly way, and recycle where possible. Our assembly instructions are printed on recycled paper. Please keep your assembly instructions safe to refer back to in the future.

Important Ottoman Safety Warnings

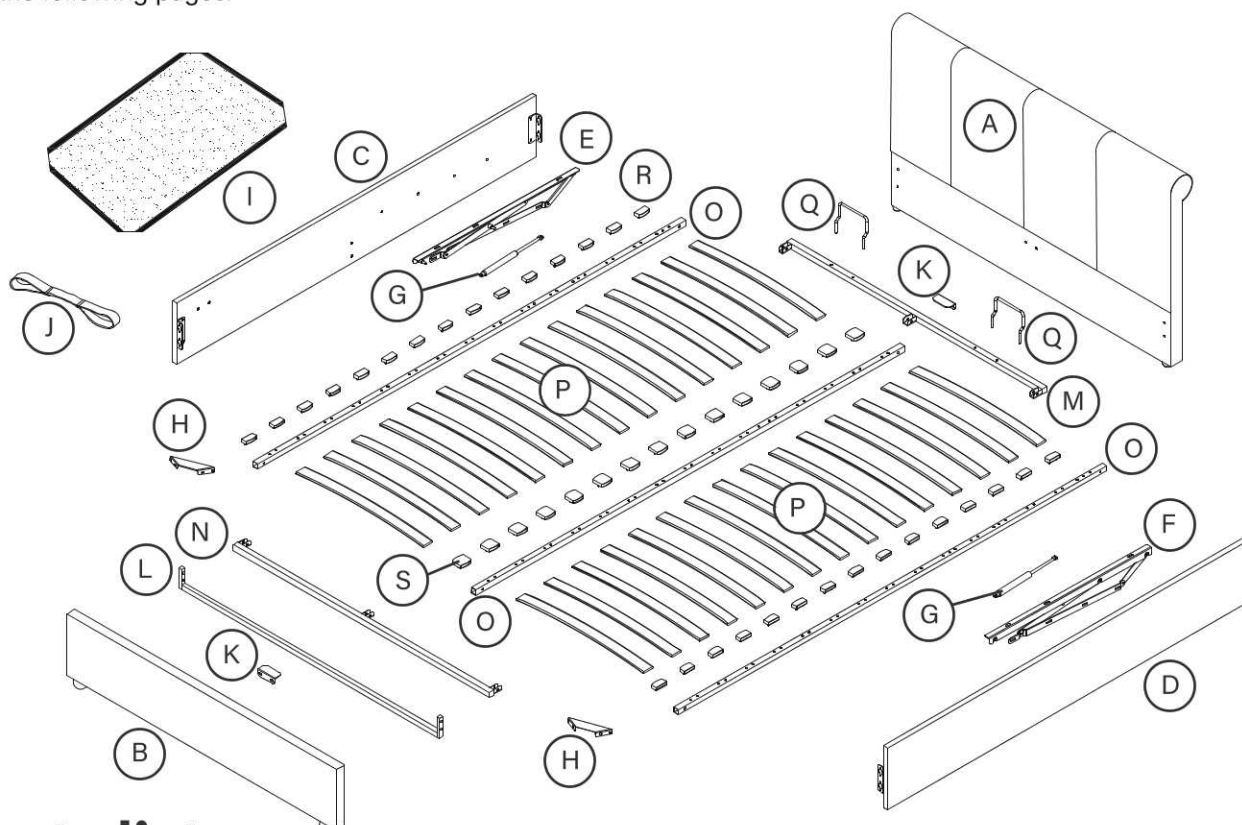
- Caution. This bed uses a pressurised mechanism.
- Use caution when operating - Always use two hands at arm's length, and only where illustrated on the product.
- You must ensure the mattress is on the bed frame before lifting the mechanism
 - Failure to do so may result in injury.
- Please ensure Children and Pets are kept away from the bed when operating the bed mechanism.
- If removing the mattress, make sure that the frame is secured as it could flip open.
- Only use the storage compartment when the frame is fully raised in the 'up' position.
- No Children or animals are to be left unattended when the frame is in 'up' position.
- Do not remain on the bed whilst the lifting mechanism is in use.
- Beware of Entrapment - Keep both hands clear of mechanism when operating the mechanism.
- When lifting the bed remove all bedding - Except the fitted sheet.
- Depending on the weight of the mattress, the rising speed will vary so be careful until you get used to the speed.
- Always use the strap to lift or lower the frame - keep fingers well away from the moving parts.
- NOTES: When fully assembled and the mattress is in position, please raise and lower the ottoman 4/5 times to ensure the gas piston are fully lubricated.



Parts

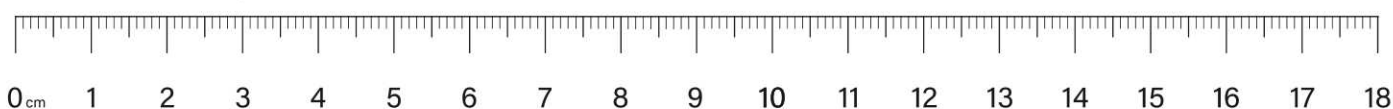
Important information

The Ottoman Lift Up bed you have purchased comes with all the parts necessary to build you a beautiful bed, please follow the instructions below in the current order. Before you begin building your bed please take a moment to read through the instructions and make sure that you've got all the relevant parts listed on the following pages.



Parts list

A.	Headboard	1	K.	Frame Support Bracket	2
B.	Footboard	1	L.	'U' Shape Cross Bar	1
C.	Side Rail - LH	1	M.	Cross Rail for Metal Slat Frame - Headend	1
D.	Side Rail - RH	1	N.	Cross Rail for Metal Slat Frame - Footend	1
E.	Lift Mechanism - LH	1	O.	Side Rails for Metal Slat Frame	Single/Double & King 2/3
F.	Lift Mechanism - RH	1	P.	Bentwood Slats	Single/Double/King 14/28/30
G.	Gas Lift Pistons	2	Q.	Mattress Stopper	Single/Double & King 1/2
H.	Angle Corner Brackets	2	R.	Single Plastic Caps	Single & Double/King 28/30
I.	Fabric Base Cover	1	S.	Double Plastic Caps	Double/King 14/15
J.	Fabric Strap	1			



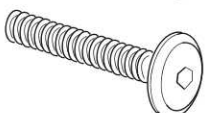
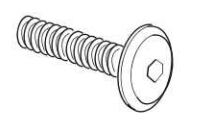
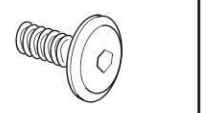



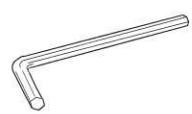
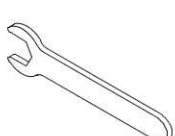
Tools required

No more tools needed.

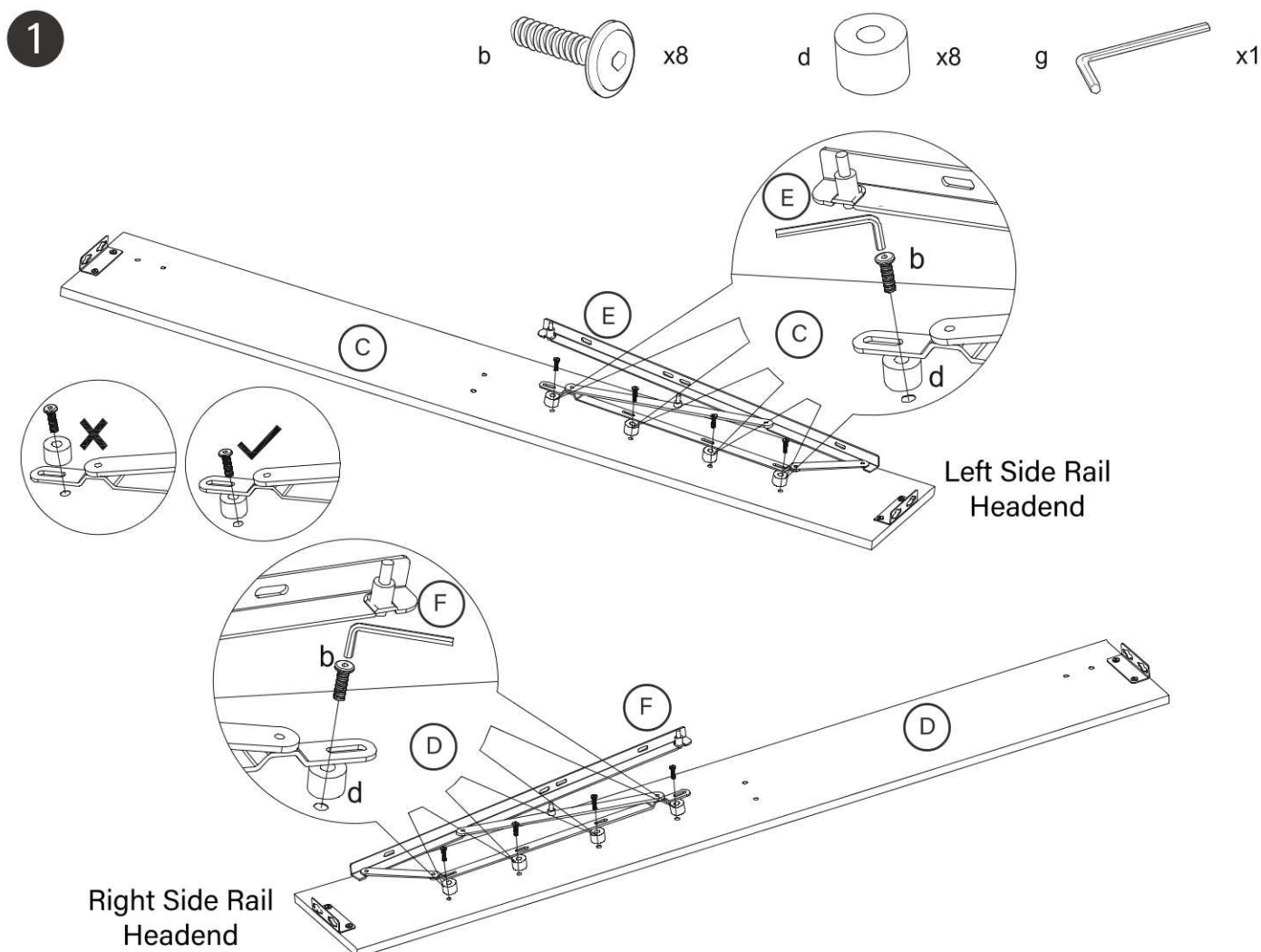
Fittings

Please check you have all the parts listed below with your product:

Hardware included for bed assembly

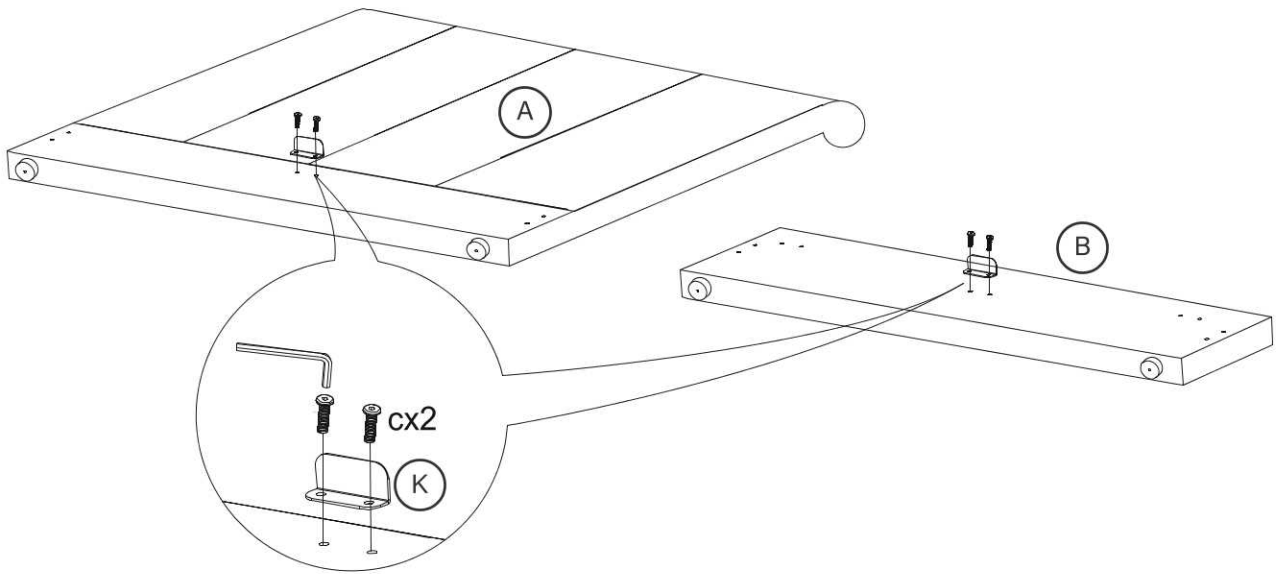
<p>a Single x14 Double or King x16</p>  <p>Big Head Bolts (M8x45mm)</p>	<p>b x16</p>  <p>Big Head Bolts (M8x30mm)</p>	<p>c x12</p>  <p>Big Head Bolts (M8x16mm)</p>	<p>d x8</p>  <p>Plastic Spacers for E & F</p>	<p>e Single x4 Double or King x6</p>  <p>Flat Washer for M8 Bolts</p>
<p>f Single x14 Double or King x16</p>  <p>Nuts for M8 Bolts</p>	<p>g x1</p>  <p>Allen Key for Bolts a, b & c</p>	<p>h x1</p>  <p>Spanner for M8 Nuts</p>		

Bed assembly

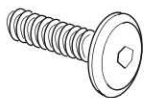



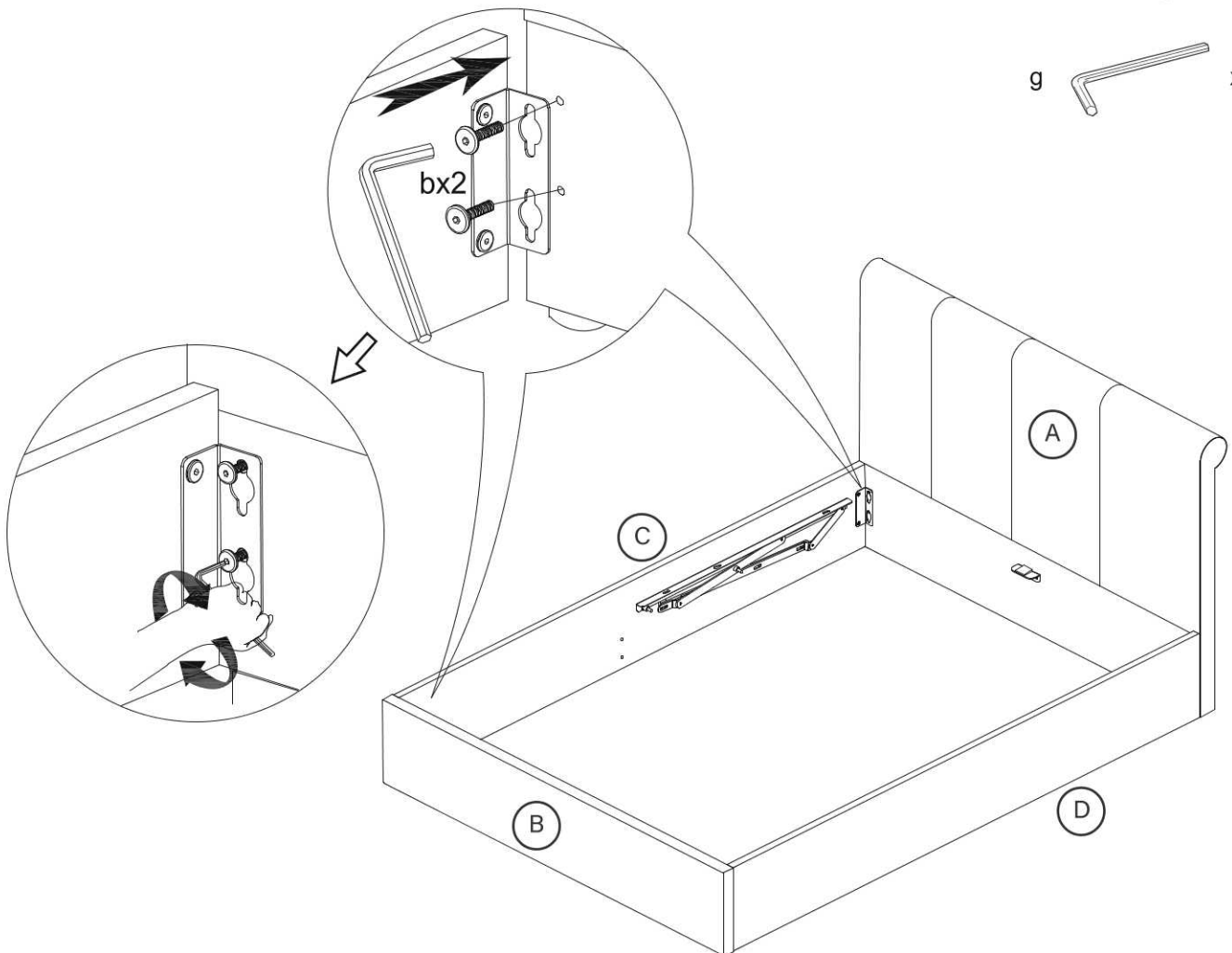
2

c  x8 g  x1

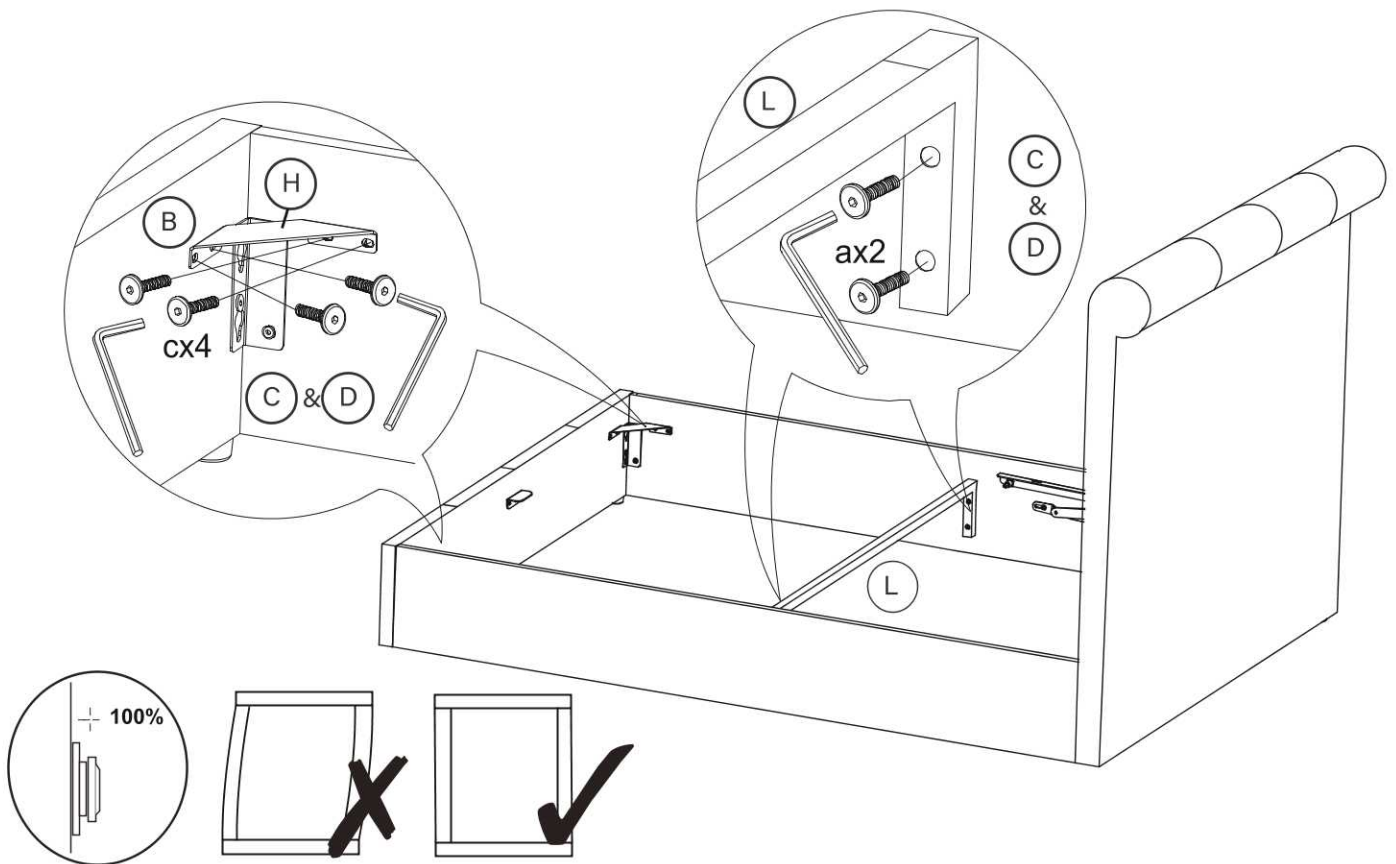
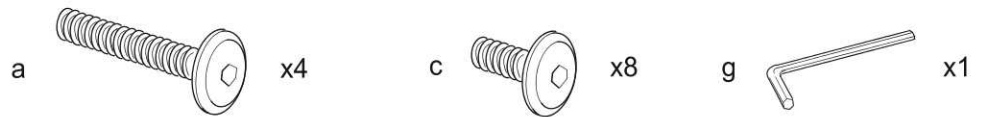


3

b  x8 g  x1



4

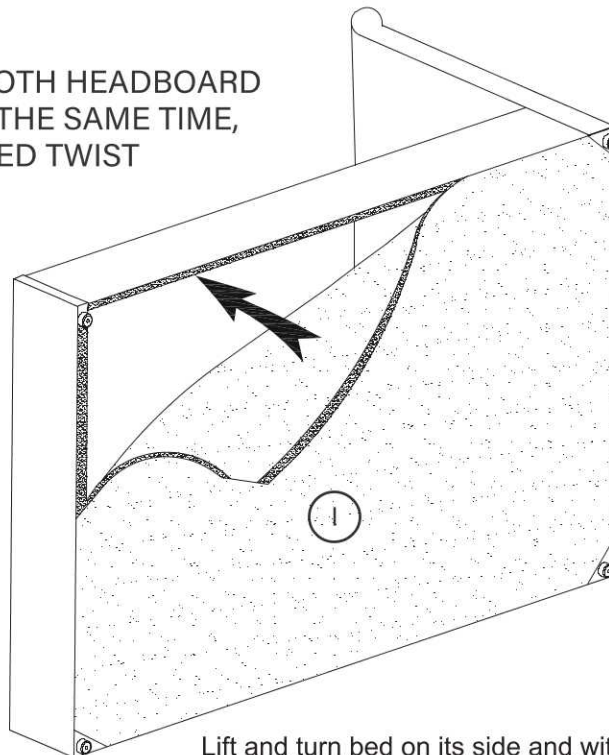


5



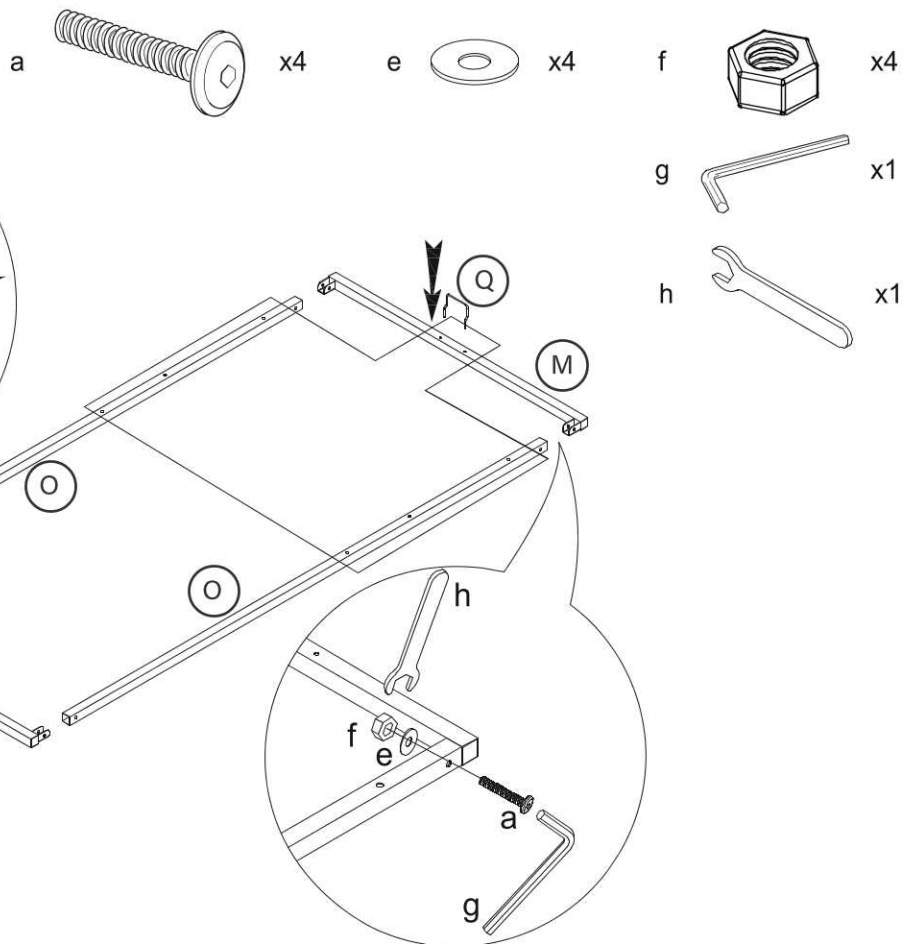
WARNING

CAREFULLY LIFT BOTH HEADBOARD
& FOOTBOARD AT THE SAME TIME,
DO NOT LET THE BED TWIST

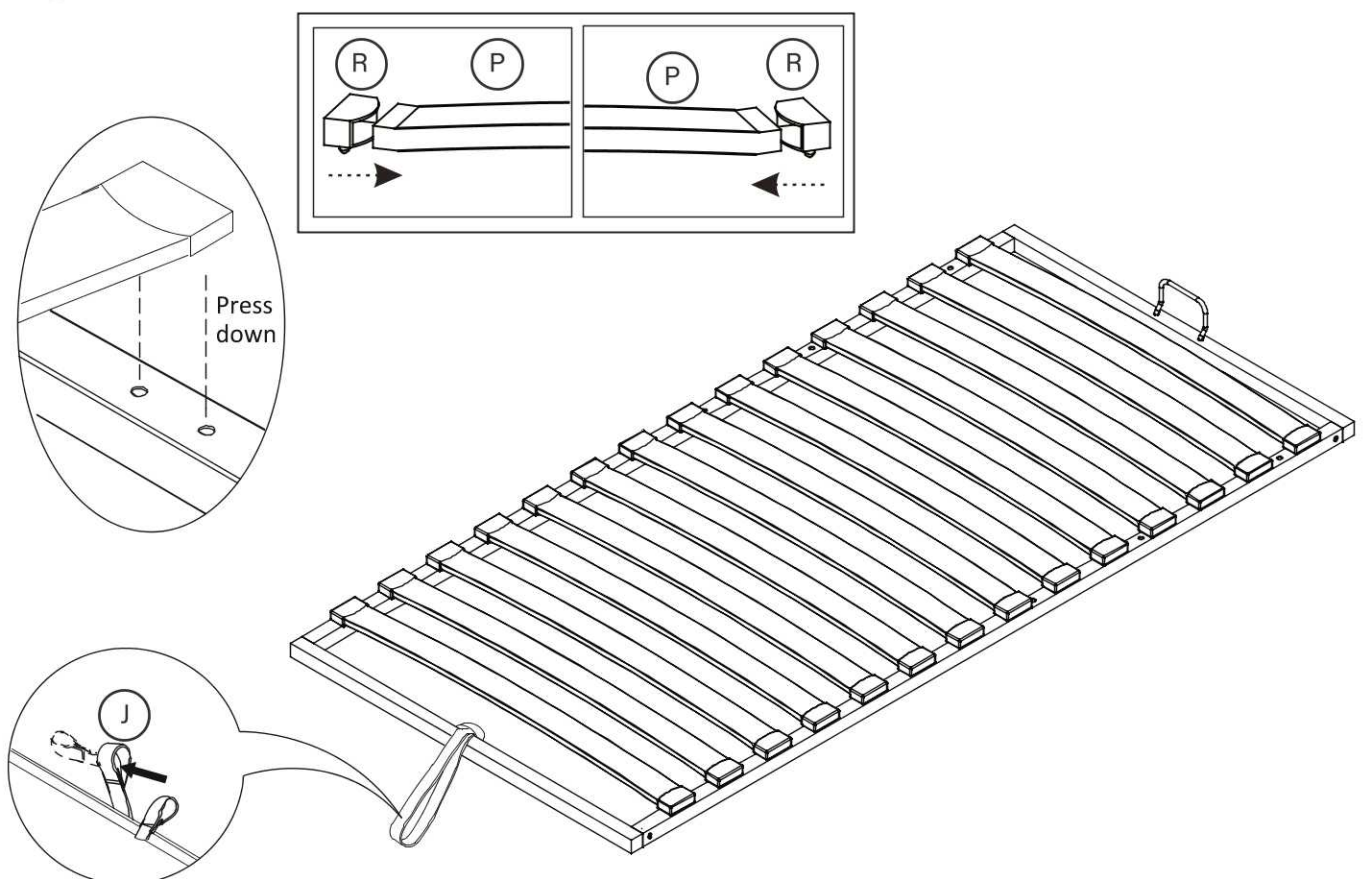


Lift and turn bed on its side and with assistant holding bed upright for safety, attach fabric base cover (I) to bottom of side-rails, headboard & footboard with the velcro tape. Make sure fabric is fixed evenly all round.

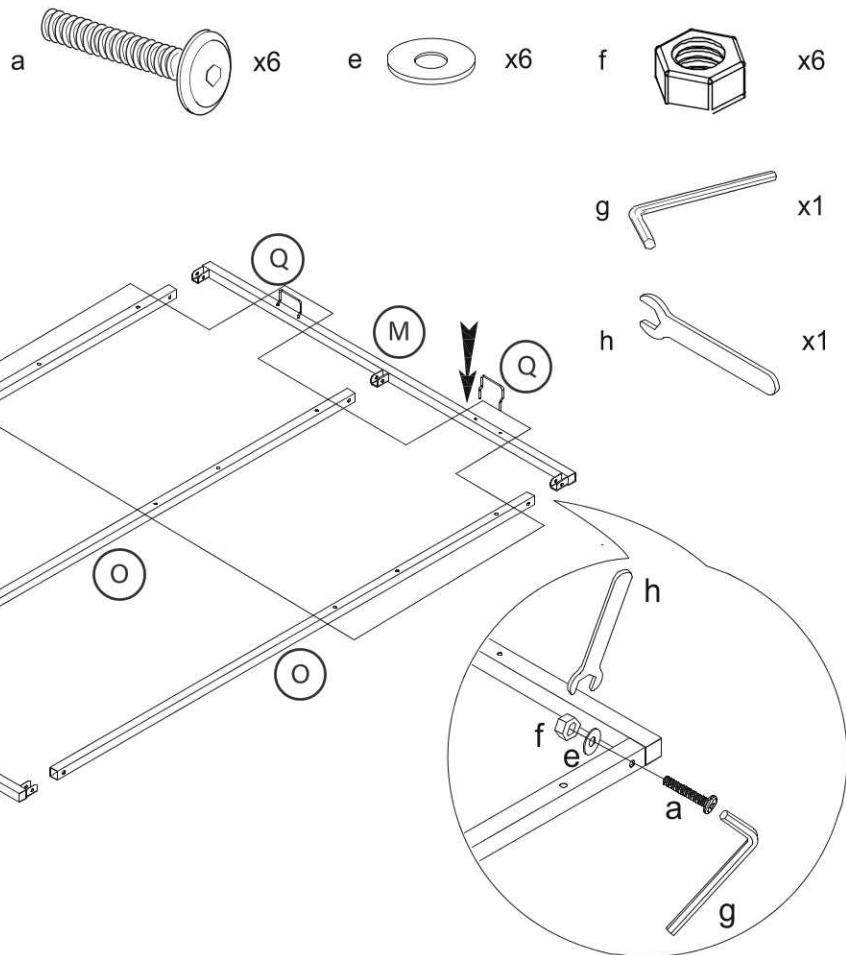
6a For Single Size



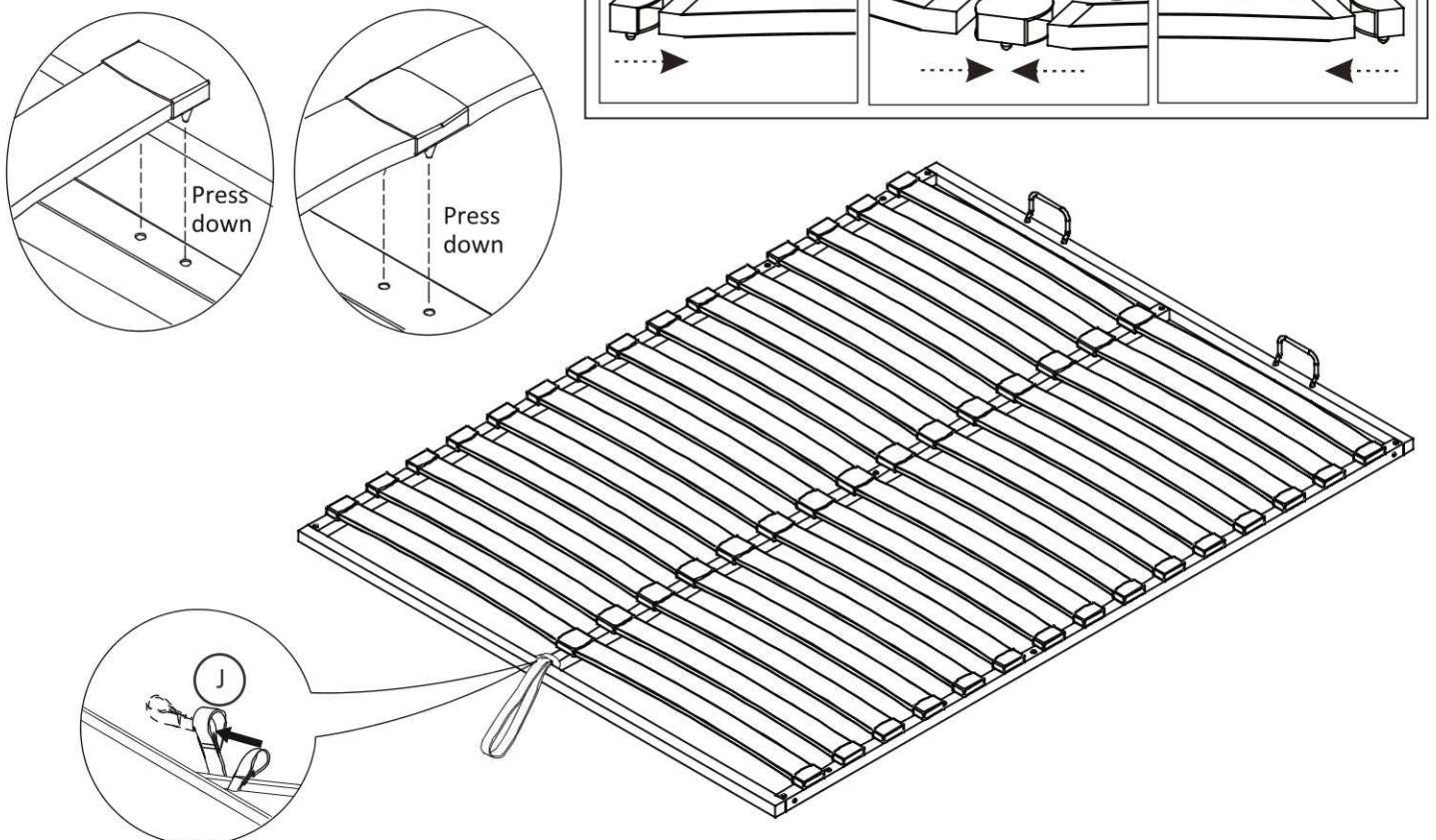
6b For Single Size



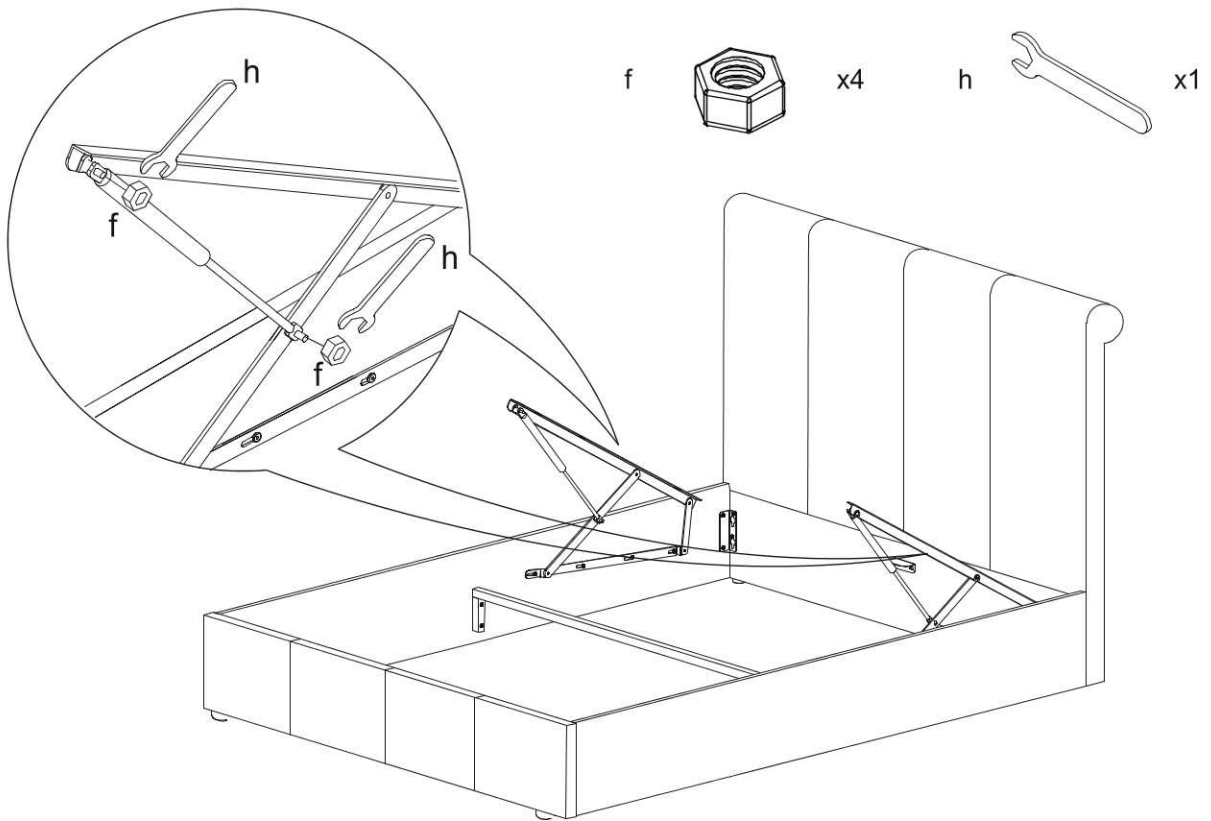
7a For Double and King Size



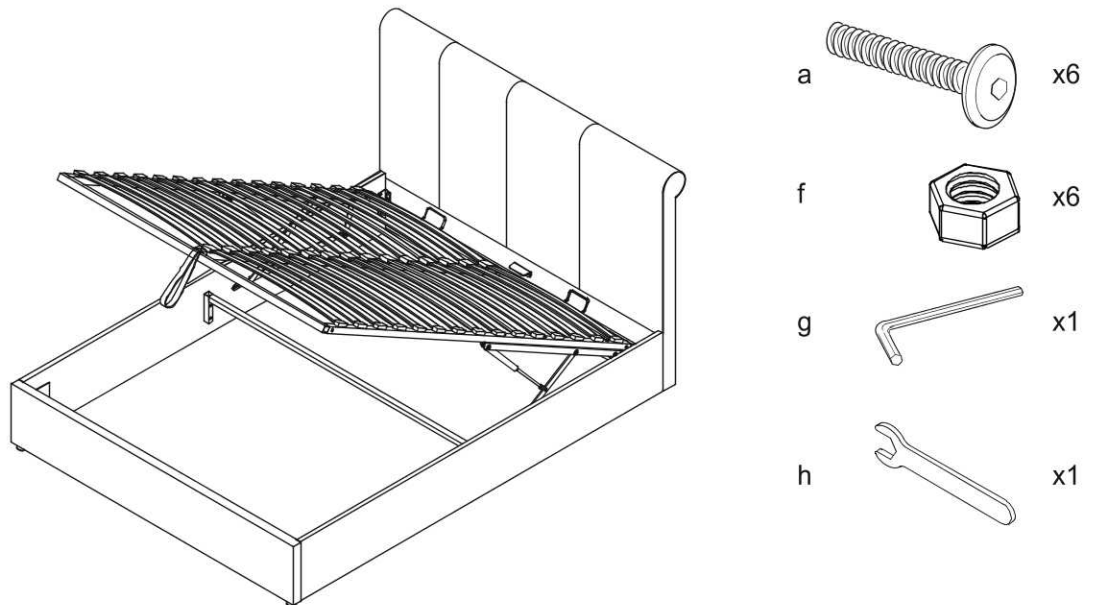
7b For Double and King Size



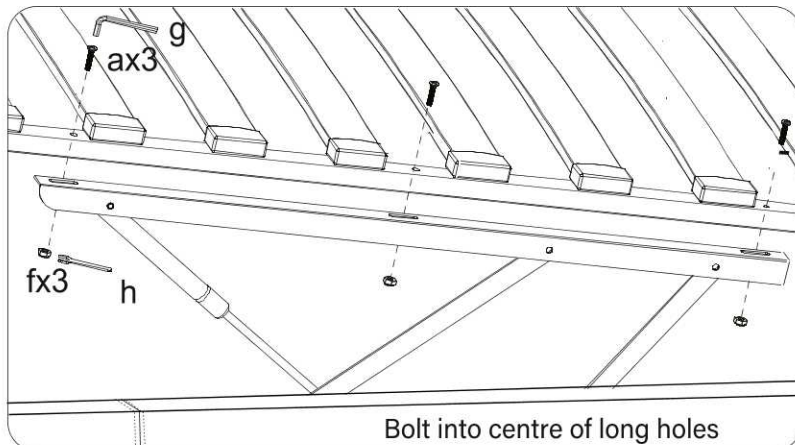
8



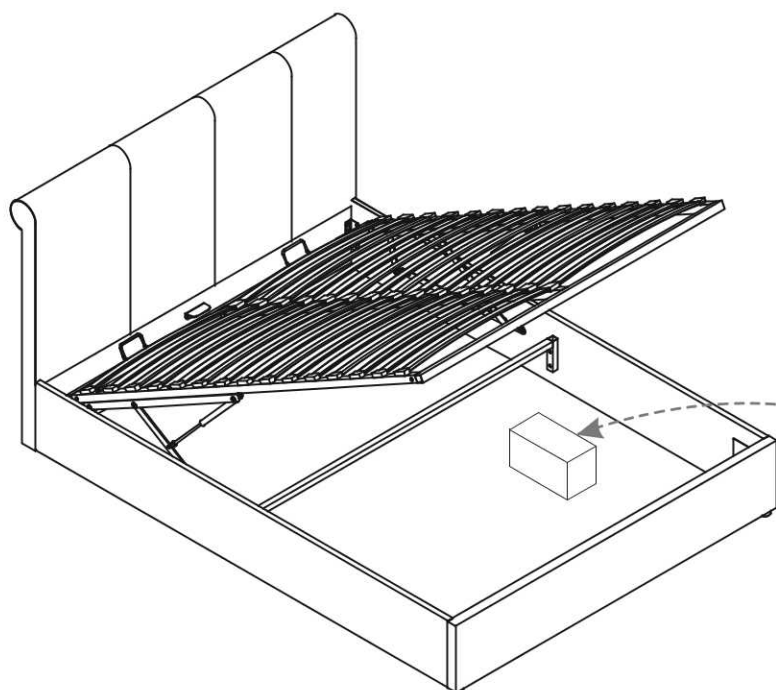
9



Loosely fit bolts, carefully hold frame down and align so there even gaps at each side then tighten all bolts 100%



Bolt into centre of long holes



Note: Be very careful what you store under the bed - the top of an item, like a suitcase or a box must not touch the slats or they may be damaged. Maximum storage height is 225mm

Overall Dimensions (LWH cm)

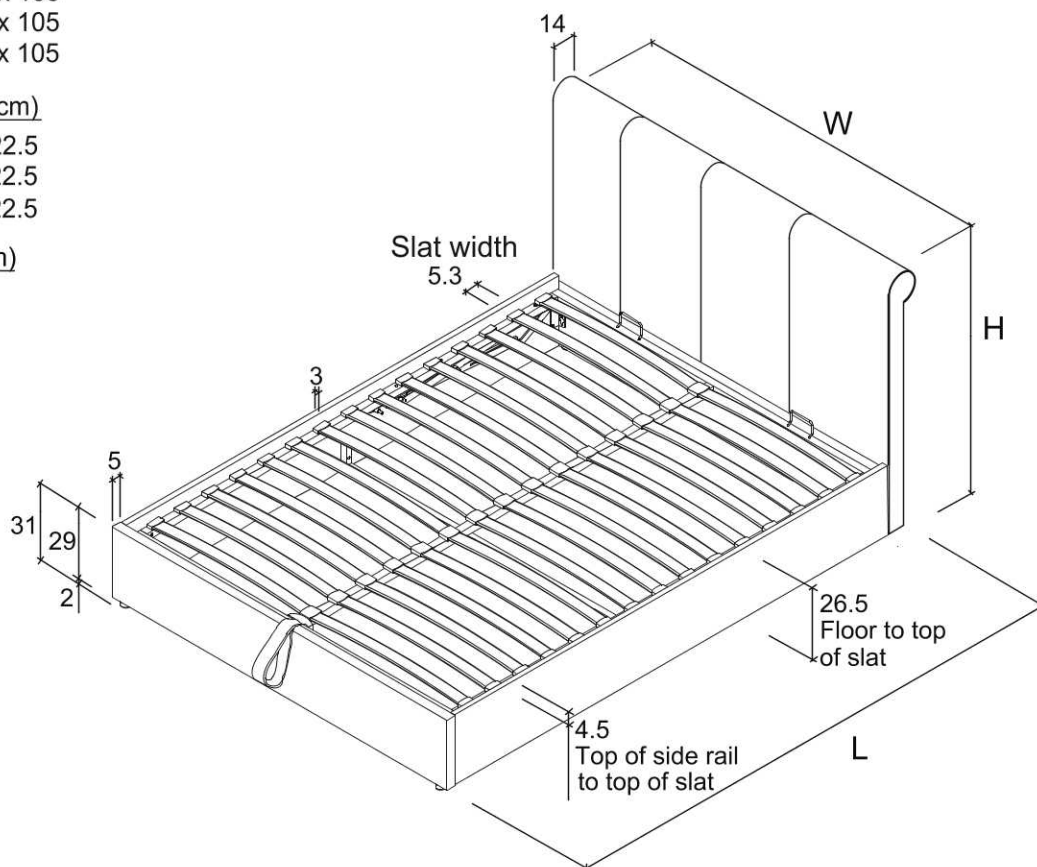
Single: 210.5 x 99.5 x 105
 Double: 210.5 x 144.5 x 105
 King: 220.5 x 159.5 x 105

Storage Dimensions (LWH cm)

Single: 193 x 92.5 x 22.5
 Double: 193 x 137.5 x 22.5
 King: 203 x 152.5 x 22.5

Distance between slats (cm)

7.3



Care and maintenance

Here are some tips to keep your new bed in tip-top condition



Cleaning

To clean your new bed, we'd advise using a warm damp cloth or if fabric, remove dust using a low suction vacuum cleaner - please do not use abrasive chemicals or bleach as this may damage the product.



Checking and moving

Periodically we recommend you check that the screws or fixtures haven't become loose over time. To move your new bed we recommend lifting it where possible, as dragging or pushing it could cause damage to the legs or flooring.



Wood

Please note each of our wooden pieces are unique, meaning that markings and shade can vary slightly between beds. Over a period of time, the wood might lighten or fade slightly due to light exposure.



Fabric

Please note depending on the lighting, positioning and surroundings of your room, the shade of the colour can sometimes appear slightly different. Over a period of time, the colour might lighten or fade slightly due to light exposure.



Metal

Metal tends to be more resilient to everyday wear and tear. We recommend to gently dust your metal furniture and keep it dry to maintain its look.

Thank you for shopping with us - we hope you have a great night's sleep

Sleep well