

PLEASE READ this sheet prior to assembly to familiarise yourself with the various stages of construction. Carefully open the cartons supplied and check the contents against the parts and fittings check lists.

Do not destroy any of the packaging until you are certain that you have all the necessary parts for the assembly.

Please ensure that the packaging is disposed of in a safe, environmentally friendly way.

Choose which side the Media tray should be placed and choose which side you want to lift up to expose the storage area then follow the following instructions step by step.

**CAUTION:** There are small components used in the construction of this unit. These loose items should be kept away from young children during assembly, to avoid the danger of choking.

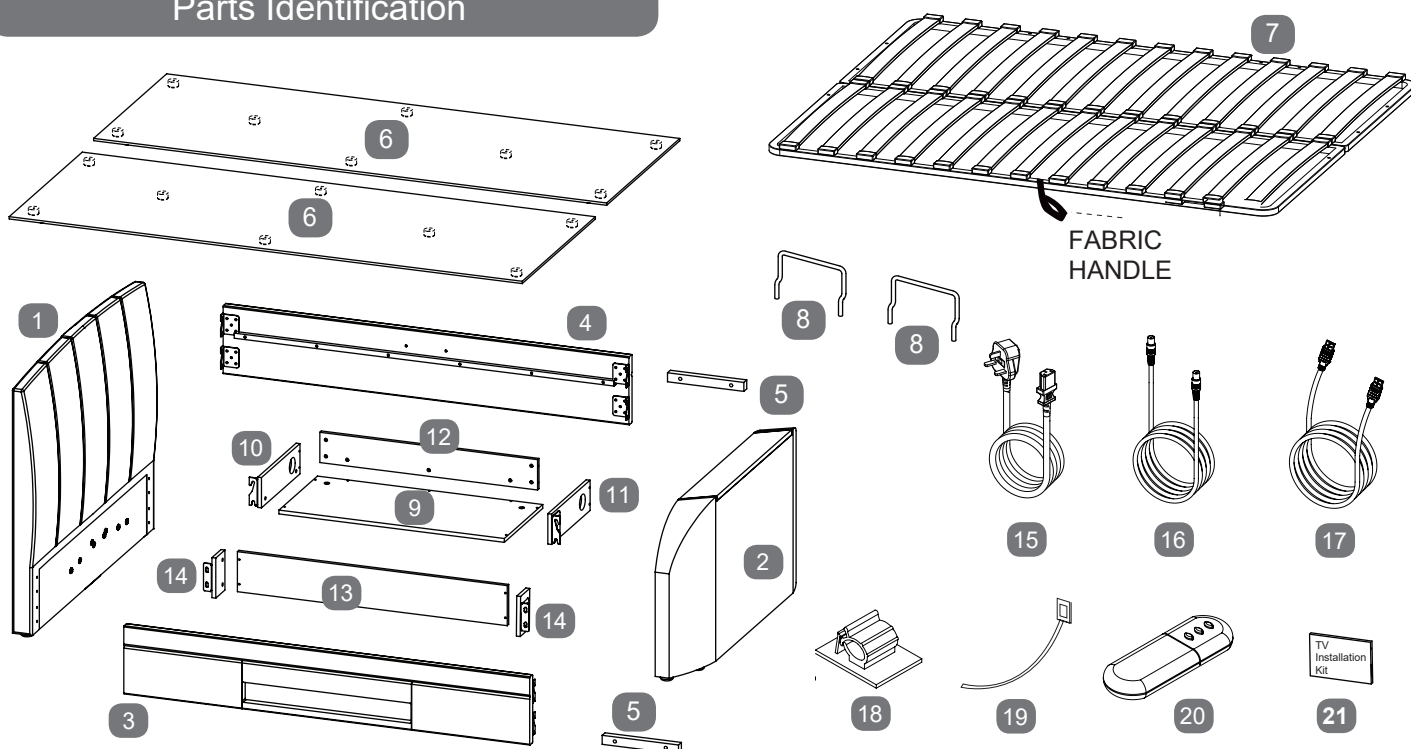
**IMPORTANT: BEFORE STARTING TO ASSEMBLE THE BED - PLEASE READ THESE INSTRUCTIONS CAREFULLY.**



An instructional video of the Operation of the Ottoman Lift Up system is available via YouTube using the following address:

[https://youtu.be/hyq4zm7h\\_yU](https://youtu.be/hyq4zm7h_yU)

### Parts Identification



## Parts Checklist

| Ref. | Description                    | Qty | Ref. | Description             | Qty |
|------|--------------------------------|-----|------|-------------------------|-----|
| 1    | Headboard                      | 1   | 12   | Media Tray Back Panel   | 1   |
| 2    | Footboard                      | 1   | 13   | Cable Guard Back Panel  | 1   |
| 3    | Side Rail - With Media Tray    | 1   | 14   | Cable Guard Side Panels | 2   |
| 4    | Side Rail - Without Media Tray | 1   | 15   | Mains Power Lead - 3 mt | 1   |
| 5    | Metal Slat Frame Support Bars  | 2   | 16   | Aerial Lead - 4 mt      | 1   |
| 6    | Base Boards                    | 2   | 17   | HDMI Lead - 5 mt        | 1   |
| 7    | Metal Slat Frame               | 1   | 18   | Cable Clips             | 5   |
| 8    | Mattress Stoppers              | 2   | 19   | Cable Ties              | 5   |
| 9    | Media Tray Base Panel          | 1   | 20   | TV Lift Remote Control  | 1   |
| 10   | Media Tray Side Panel - L      | 1   | 21   | TV Installation Kit     | 1   |
| 11   | Media Tray Side Panel - R      | 1   |      |                         |     |

Pack Inside  
accessory  
box in  
footboard  
Pack 2

## Fittings Checklist

### HARDWARE NEEDED FOR FIXING SIDE RAILS TO HEADBOARD & FOOTBOARD PACKED IN SIDE RAIL PACK 3 - HARDWARE PACK (A)

| Ref | Description                                                                 | Qty | Ref. | Description                 | Qty |
|-----|-----------------------------------------------------------------------------|-----|------|-----------------------------|-----|
| A   | Bolts (M8x30mm) for fitting side rails (3&4) to headboard & footboard (1&2) | x16 | C    | Flat Washers (for M8 bolts) | x16 |
| B   | Spring Washers (for M8 bolts)                                               | x16 | D    | Allen Key (5mm for M8 bolt) | x1  |

### HARDWARE NEEDED FOR ASSEMBLING AND FITTING MEDIA TRAY TO SIDE RAIL (3) PACKED IN MEDIA TRAY PACK 4 - HARDWARE PACK (B)

| Ref | Description                                             | Qty | Ref. | Description                                      | Qty |
|-----|---------------------------------------------------------|-----|------|--------------------------------------------------|-----|
| A   | Bolts (M8x30mm) for fitting Media Tray to side rail (4) | x4  | M    | Screws (5x50mm) for assembling Media Tray Panels | x11 |
| C   | Flat Washers (for M8 bolts)                             | x4  | N    | Plastic Barrel Nuts                              | x11 |

### HARDWARE NEEDED FOR FIXING HINGES TO HEADBOARD & FOOTBOARD PACKED IN OTTOMAN PACK 5 - HARDWARE PACK (D)

| Ref | Description                                                  | Qty | Ref.  | Description         | Qty |
|-----|--------------------------------------------------------------|-----|-------|---------------------|-----|
| A   | Fitting gas-lift mechanisms F(a) & F(b) to side panels (3&4) | x8  | F (a) | Gas-Lift Mechanisms | x1  |
| B   | Spring Washers (for M8 bolts)                                | x8  |       |                     |     |
| C   | Flat Washers (for M8 bolts)                                  | x8  | F (b) |                     | x1  |

### HARDWARE NEEDED FOR FITTING METAL SLAT FRAME PACKED IN OTTOMAN PACK 5 - HARDWARE PACK (D)

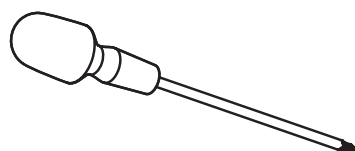
| Ref | Description                                                                 | Qty | Ref. | Description                                | Qty |
|-----|-----------------------------------------------------------------------------|-----|------|--------------------------------------------|-----|
| B   | Spring Washers (for M8 bolts)                                               | x10 | G    | Nuts (for M8 slat frame bolts)             | x6  |
| C   | Flat Washers (for M8 bolts)                                                 | x20 | H    | Flange Lock-Nuts (M8) for gas-lift pistons | x2  |
| E   | Bolts (M8x45mm) for fitting metal slat frame (5) to gas-lift mechanisms (F) | x10 | J    | Spanner (for M8 nut)                       | x1  |
| K   | Bolts (M8x20mm) for fitting Metal Plates (K) to Metal Slat Frame (7)        | x4  | L    | Metal Plates for Slat Frame                | x2  |

## Fittings Checklist

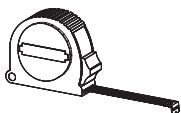
### HARDWARE NEEDED FOR ASSEMBLING AND FITTING CABLE GUARD PACKED IN OTTOMAN PACK 5 - HARDWARE PACK (D)

| Ref | Description                                              | Qty | Ref. | Description                                | Qty |
|-----|----------------------------------------------------------|-----|------|--------------------------------------------|-----|
| A   | Bolts (M8x30mm) for fitting Cable Guard to Footboard (2) | x4  | M    | Screws (5x50mm) for assembling Cable Guard | x4  |
| C   | Flat Washers (for M8 bolts)                              | x4  | N    | Plastic Barrel Nuts                        | x4  |

### Additional Tools Required



Cross-head Screwdriver



Tape Measure

### Care & Maintenance

In the unlikely event of missing or damaged parts, please contact the customer service team on 0344 292 00 00. When calling this number, please quote the part code reference numbers shown in this leaflet when requesting spare or replacement parts.

### General Hints & Tips



Please retain your assembly instruction and tools provided for future use. Periodically check that all bolts are still tight.



Assembly requires two persons.



2HRS

Approximate time to assemble this product

Intersecting Hole

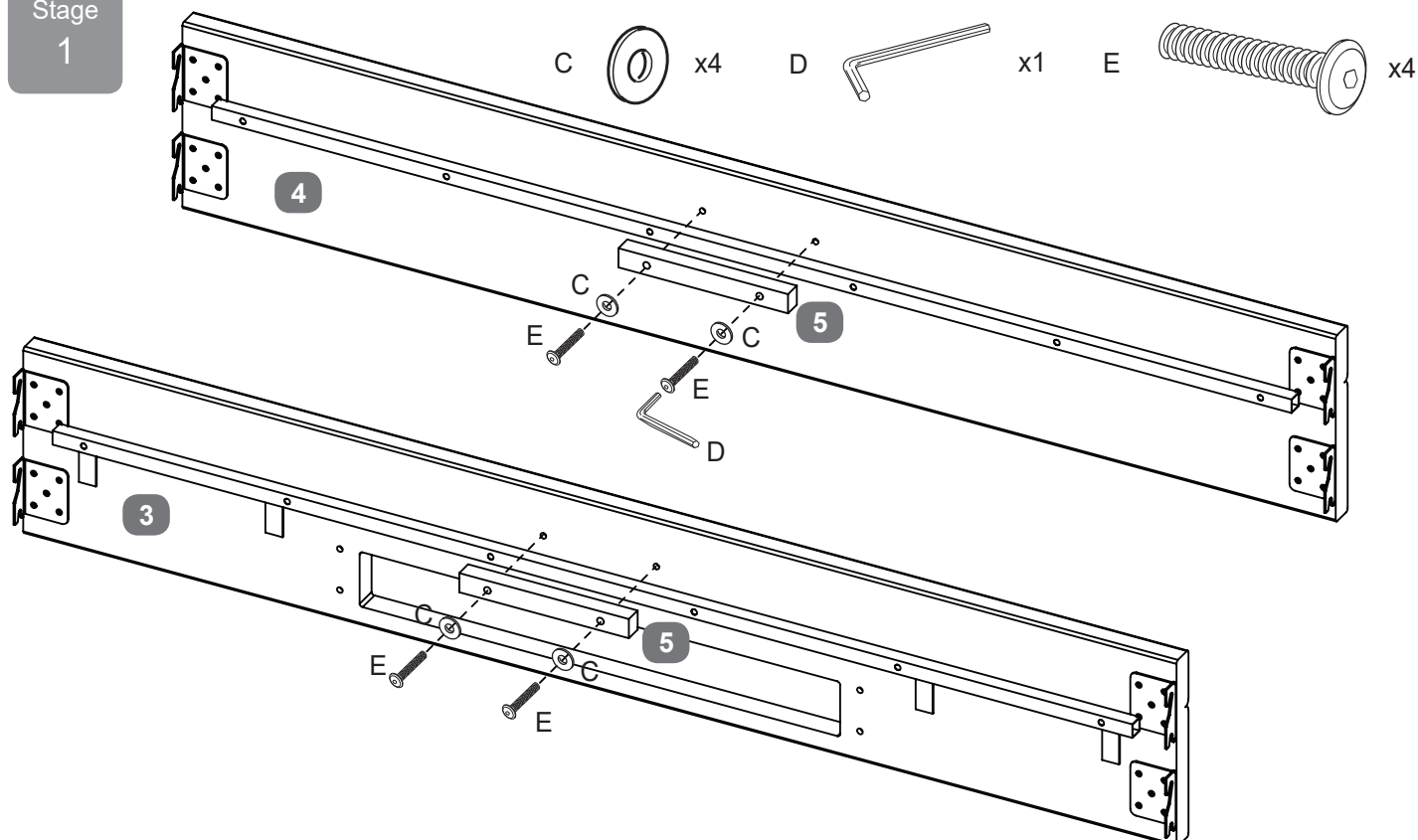


When they are supplied and are part of the assembly of this bed, ensure that the barrel nuts are fitted the correct way so the hole in the nut is facing towards the intersecting hole in the panel.

Because of the size & weight of the bed, it should be installed in it's actual place of use.

### Fitting Slat Frame Supports - Use Pack 'D'

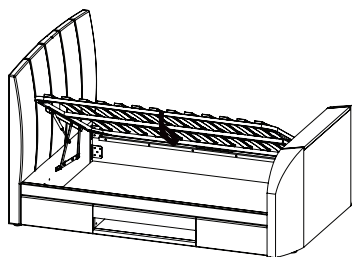
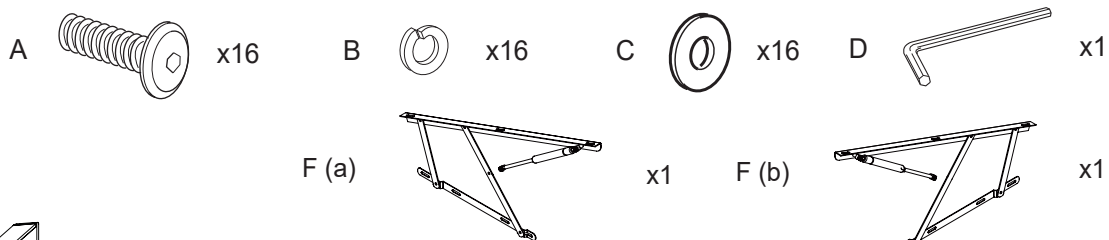
Stage  
1



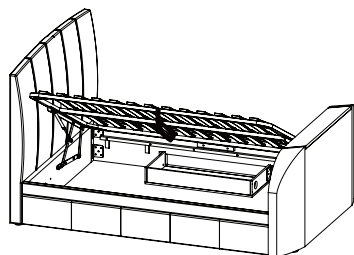
# Prepare Head & Foot Ends & Choose Ottoman Opening Side - Use Pack 'A&D'

CHOOSE WHICH SIDE YOU WANT TO LIFT UP - FROM LEFT

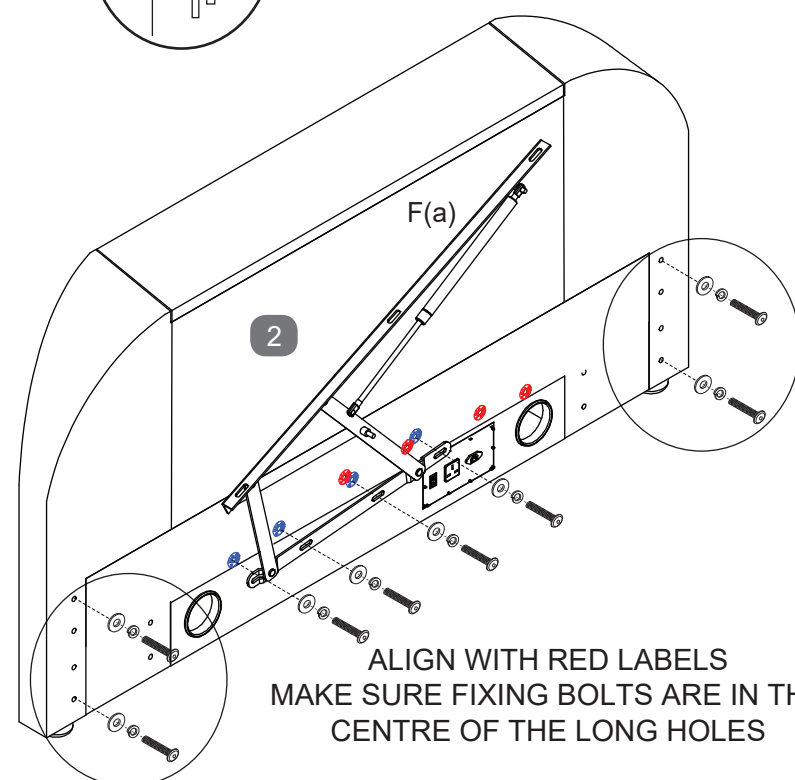
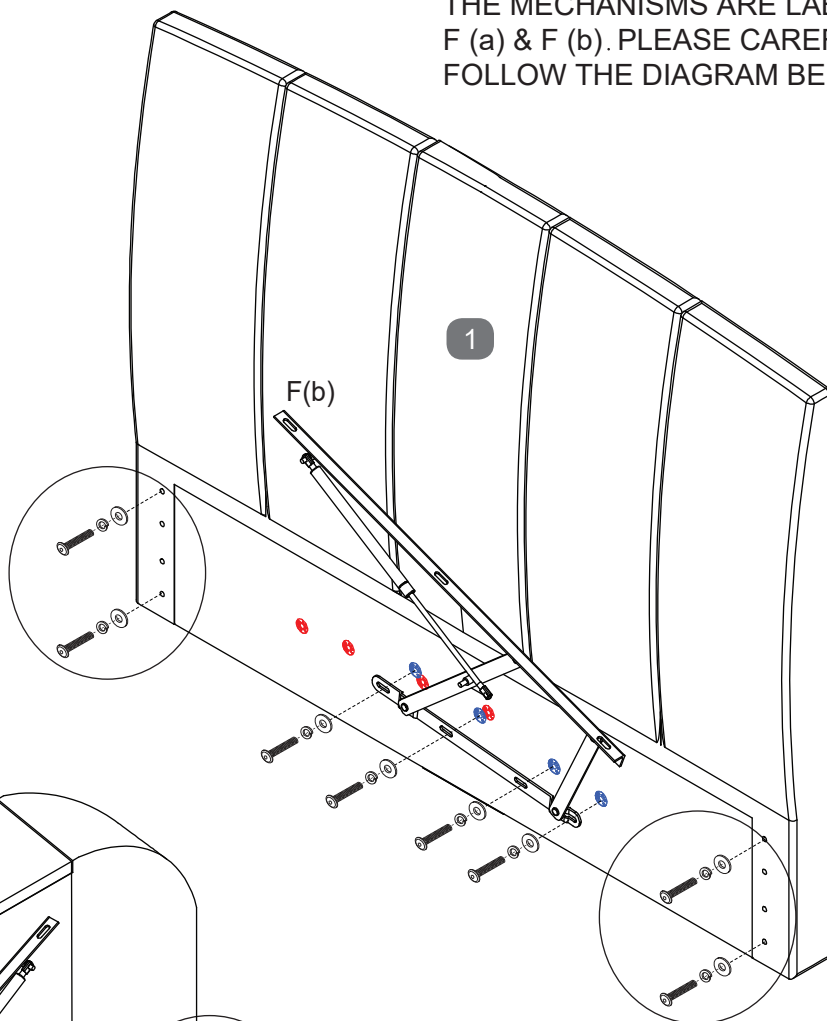
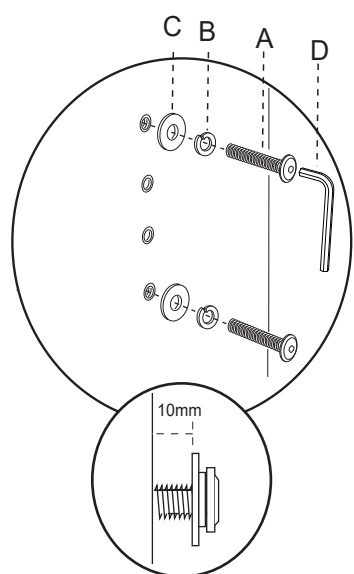
Stage  
2a



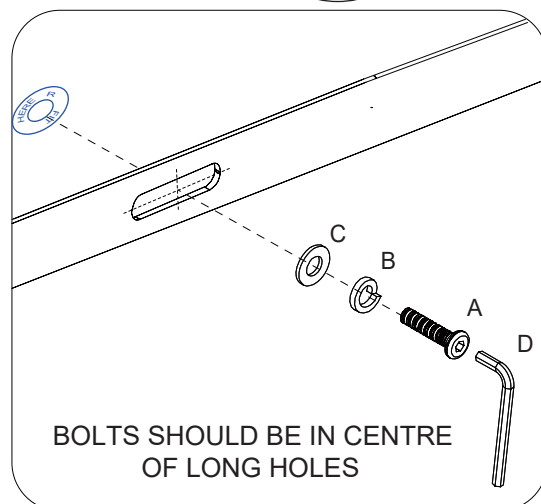
CHECK THIS DIAGRAM AND IF ACCESS IS NEEDED FROM LEFT SIDE OF BED, FIT BOTH LIFT MECHANISMS TO RIGHT SIDE OF THE BED. BOLT INTO THE HOLES MARKED (R) WITH RED LABELS.



THE MECHANISMS ARE LABELED F (a) & F (b). PLEASE CAREFULLY FOLLOW THE DIAGRAM BELOW.



ALIGN WITH RED LABELS  
MAKE SURE FIXING BOLTS ARE IN THE  
CENTRE OF THE LONG HOLES



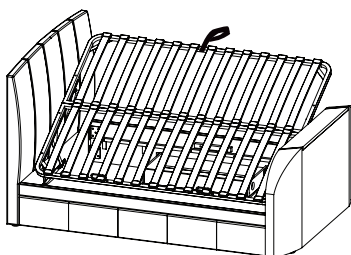
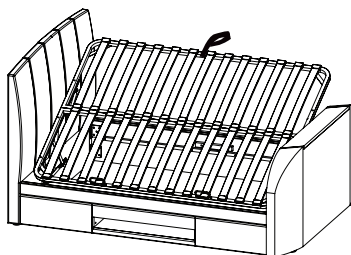
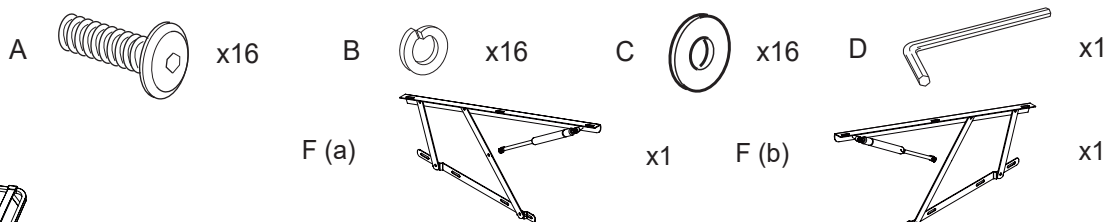
BOLTS SHOULD BE IN CENTRE  
OF LONG HOLES



# Prepare Head & Foot Ends & Choose Ottoman Opening Side - Use Pack 'A&D'

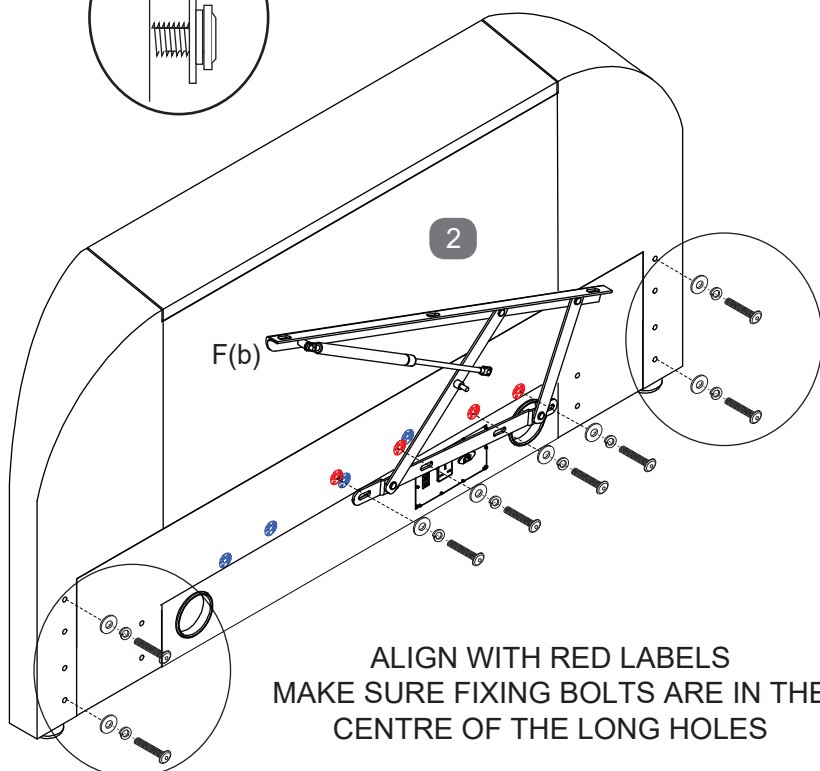
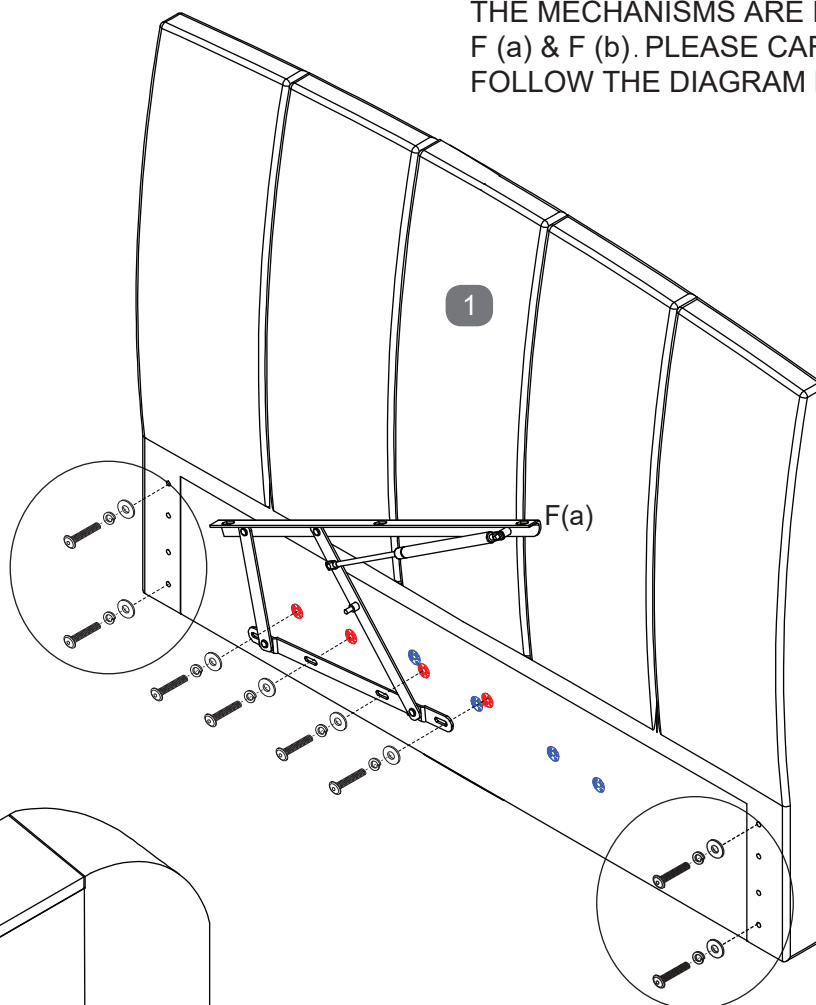
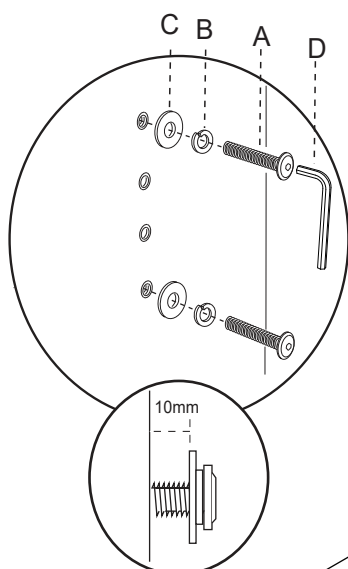
CHOOSE WHICH SIDE YOU WANT TO LIFT UP - FROM RIGHT

Stage  
2b

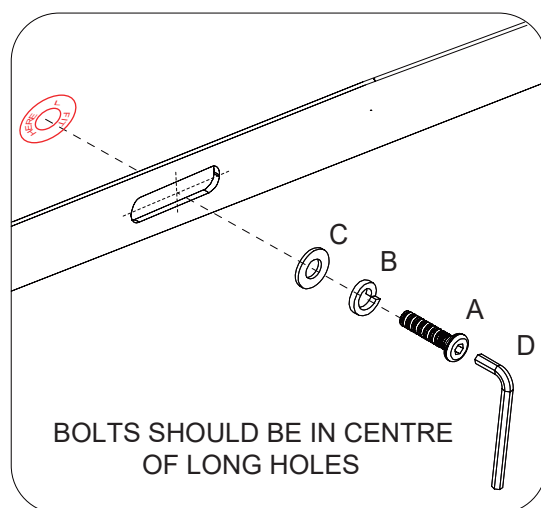


CHECK THIS DIAGRAM AND IF ACCESS IS NEEDED FROM RIGHT SIDE OF BED, FIT BOTH LIFT MECHANISMS TO LEFT SIDE OF THE BED. BOLT INTO THE HOLES MARKED (L) WITH RED LABELS.

THE MECHANISMS ARE LABELED F (a) & F (b). PLEASE CAREFULLY FOLLOW THE DIAGRAM BELOW.



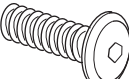


ALIGN WITH RED LABELS  
MAKE SURE FIXING BOLTS ARE IN THE  
CENTRE OF THE LONG HOLES

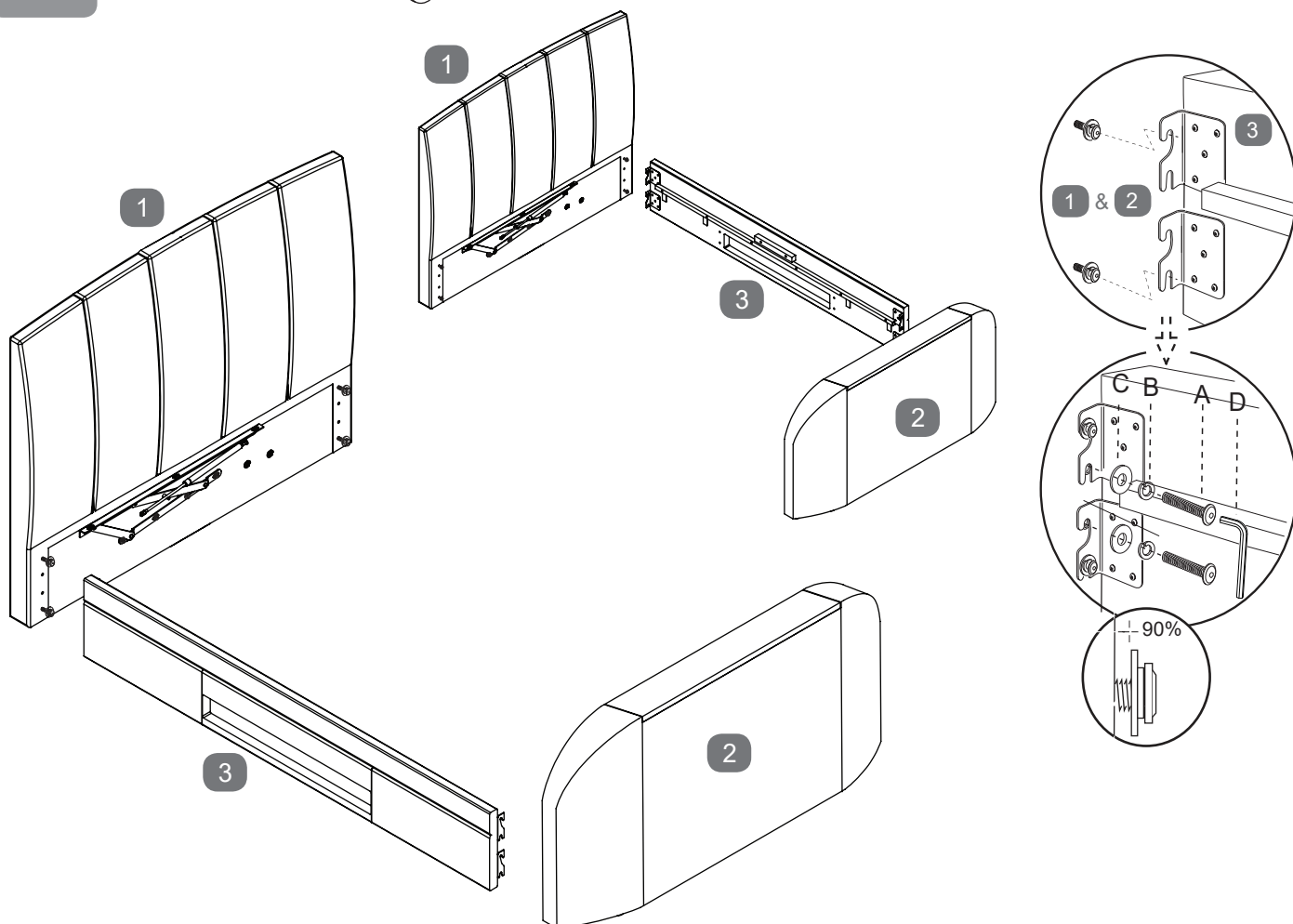


BOLTS SHOULD BE IN CENTRE  
OF LONG HOLES

## Fitting Media Tray Side Rail left or right side - Use Pack 'A'

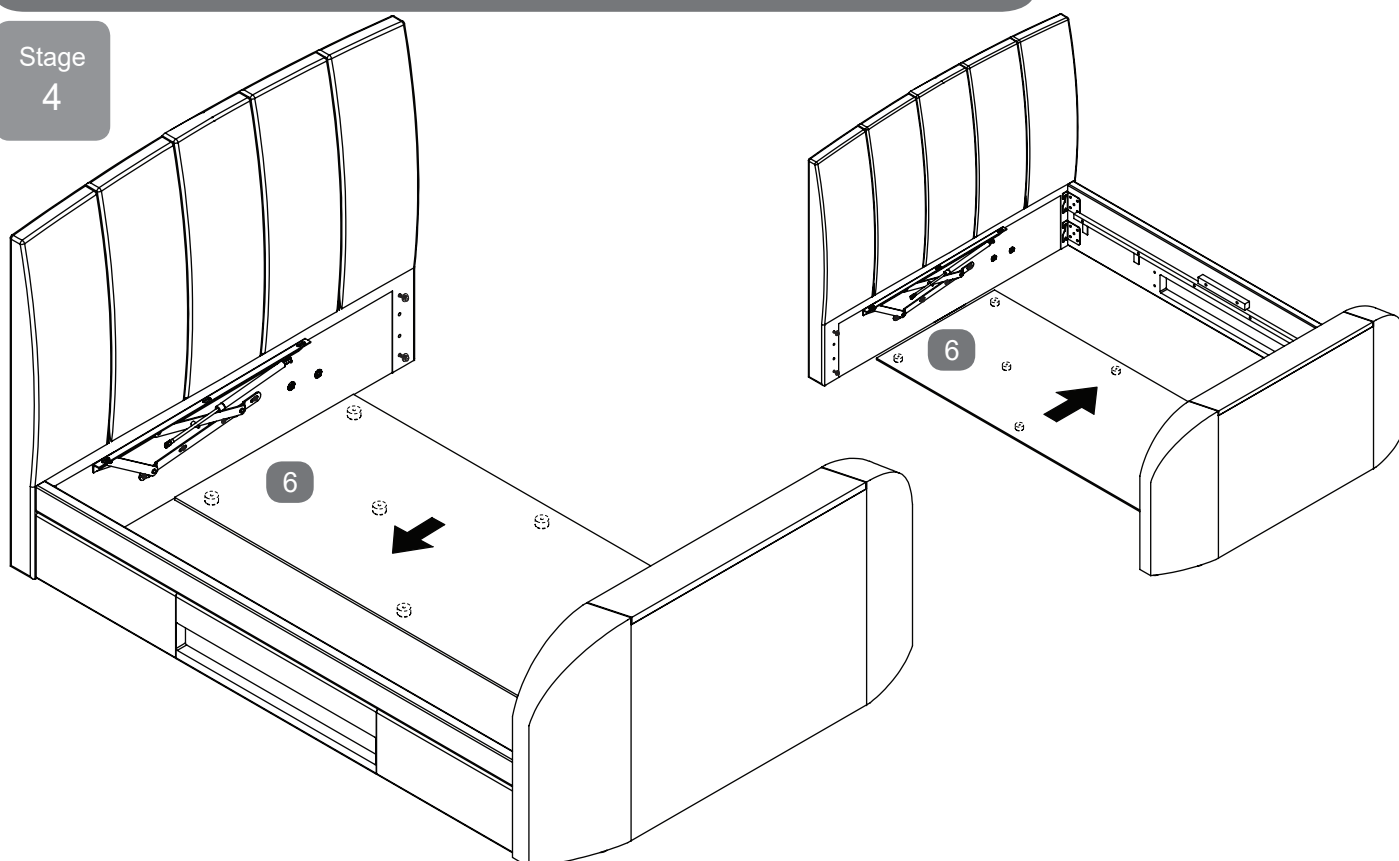
Stage  
3

A  x4    B  x4    C  x4    D  x1



## Slide in first Base Board with Plastic Glides underneath

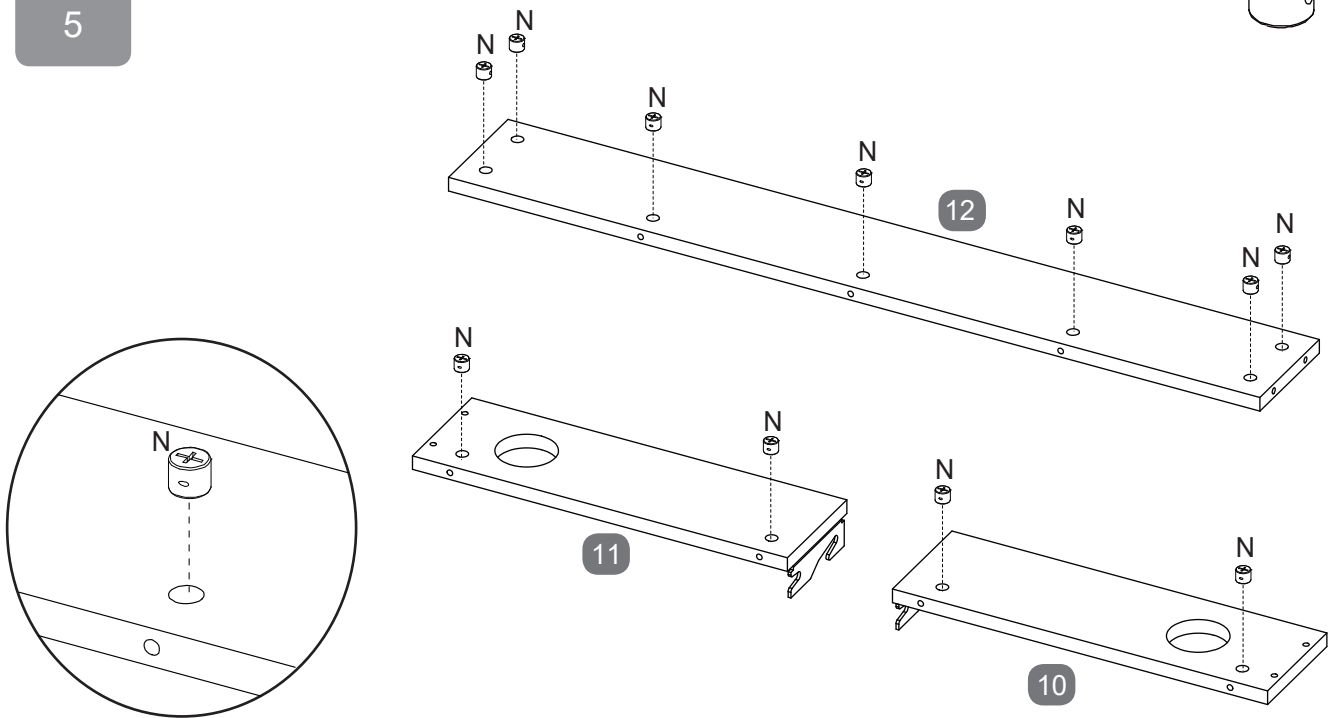
Stage  
4



## Assemble Cable Guard - Use Pack 'D'

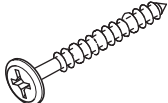
Stage  
5

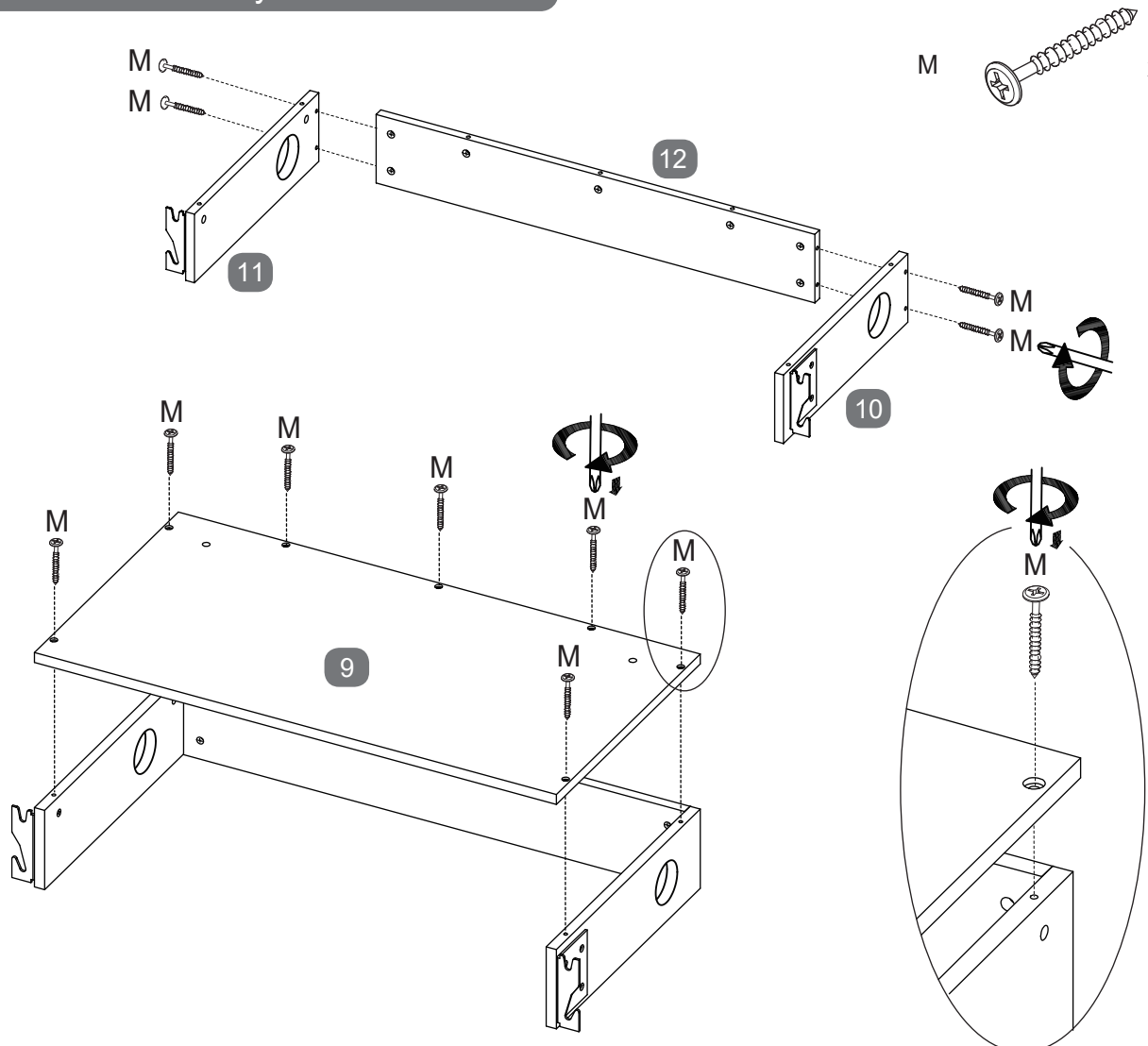
N  x11



## Assemble Media Tray - Use Pack 'B'

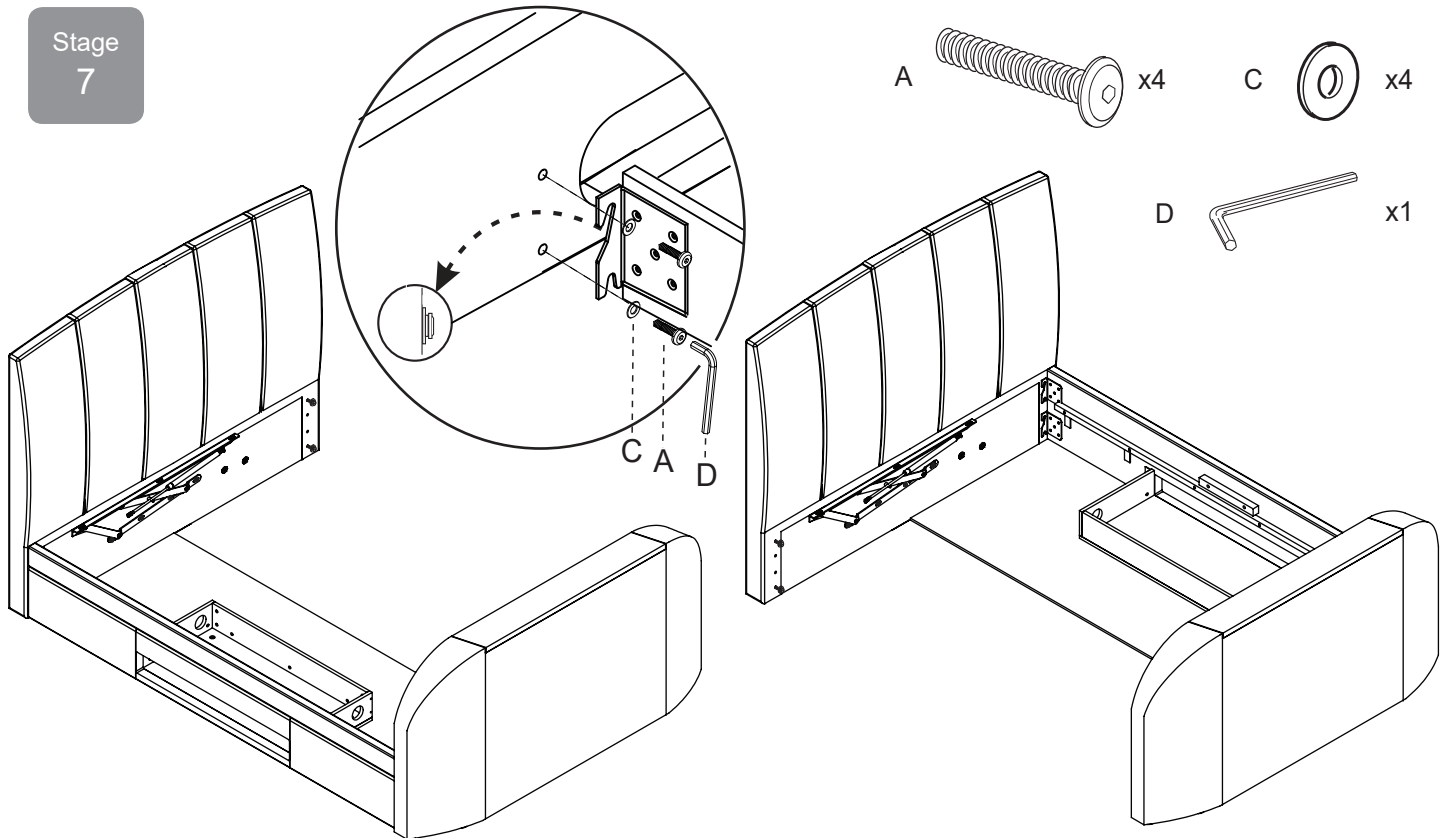
Stage  
6

M  x11



## Fitting Media Tray - Use Pack 'B'

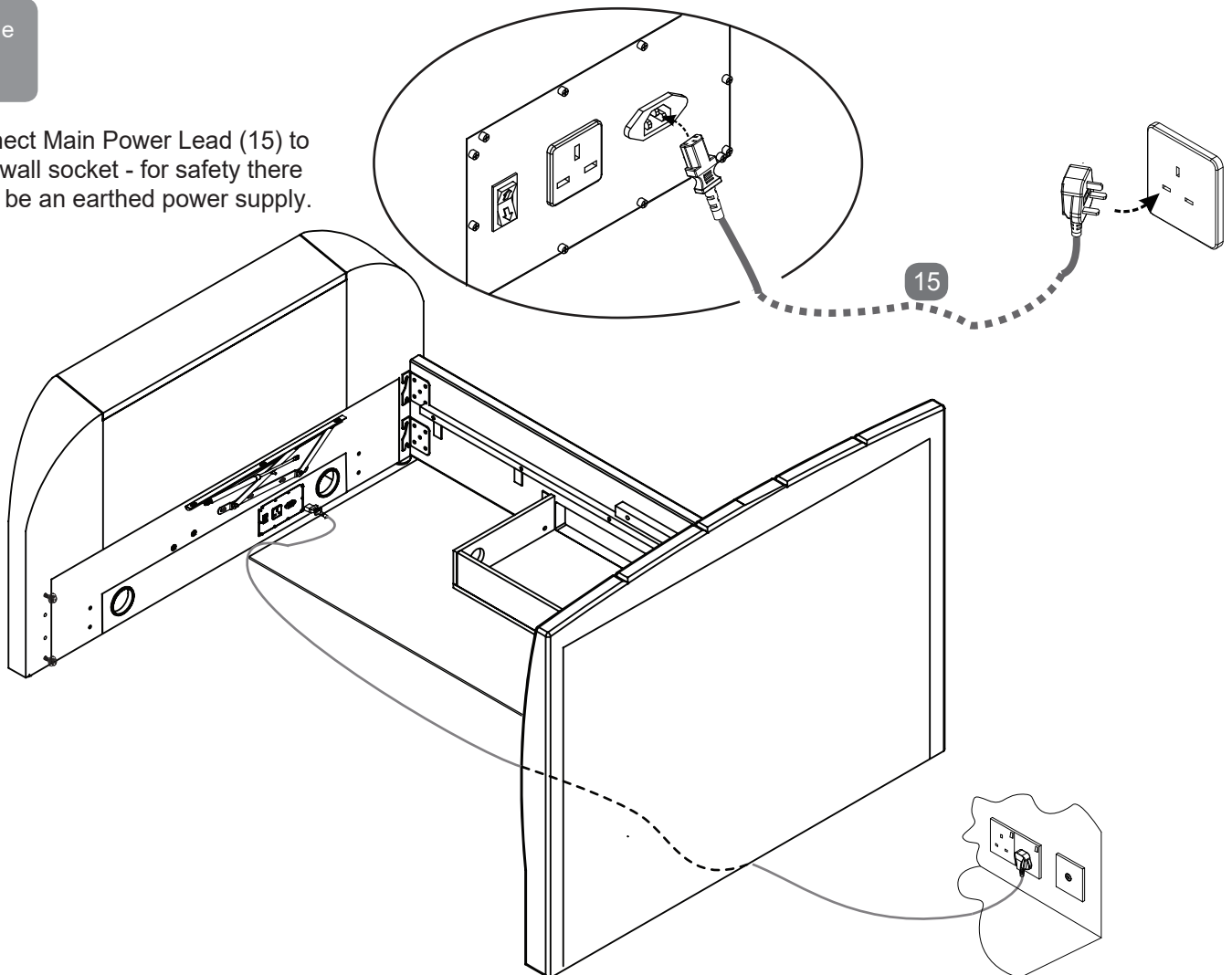
Stage  
7



## Electrical & Cable Connections

Stage  
8

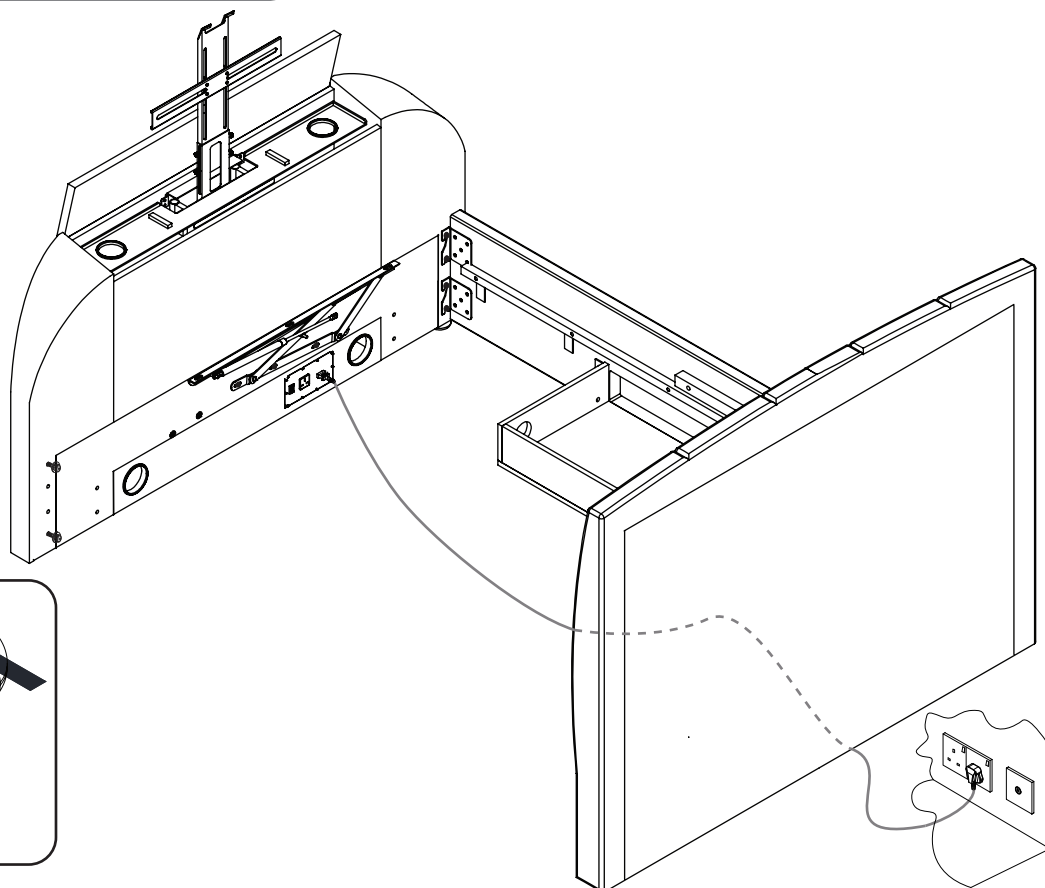
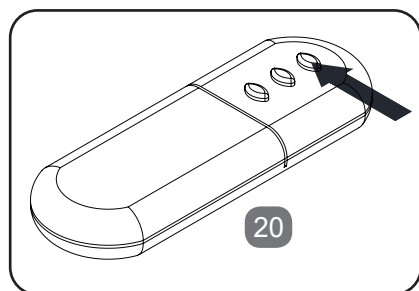
Connect Main Power Lead (15) to your wall socket - for safety there must be an earthed power supply.



## Electrical & Cable Connections

Stage  
9

Press the “UP”  
button to raise  
the TV lift.

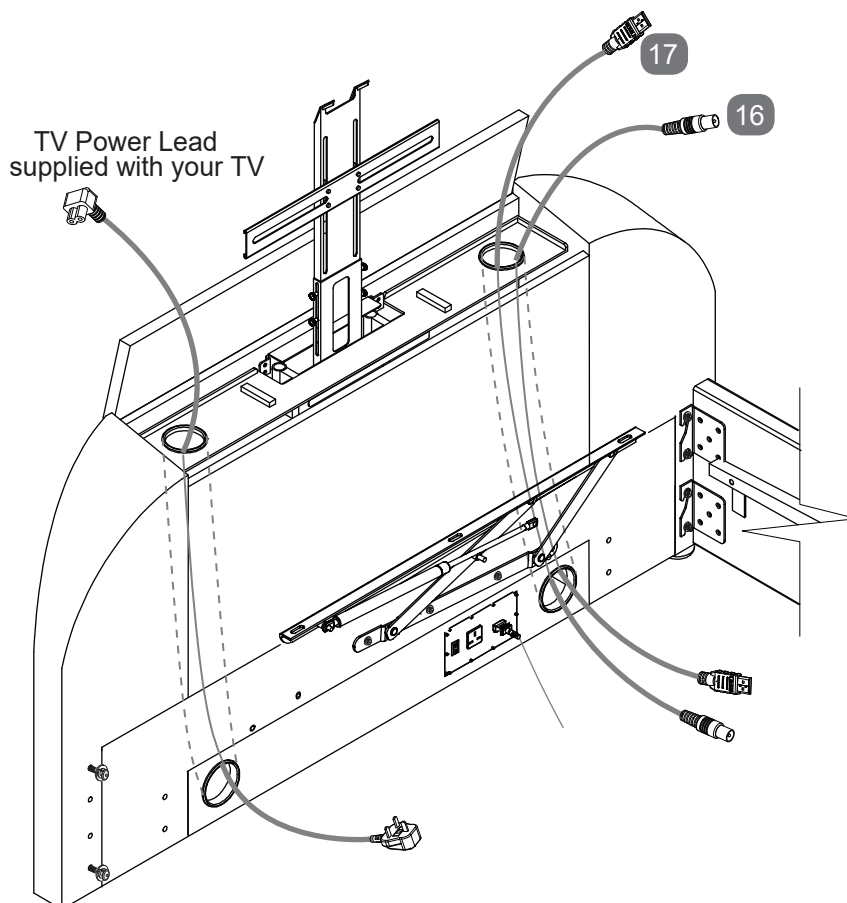


**Note: For illustration purposes  
only, TV connections may vary.**

Stage  
10

### TIP:

BEFORE FITTING THE TV,  
PUSH CABLES THROUGH  
EACH DUCT FROM THE TOP.  
CHOOSE THE BEST SIDE TO  
USE DEPENDING ON WHERE  
THE CONNECTION PORTS  
ARE ON BACK OF YOUR TV.  
NEVER CROSS CABLES FROM  
ONE SIDE TO THE OTHER.



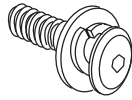


# TV Installation - Normal Vesa Fixing

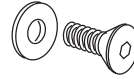
Stage  
11

IF SCREWS ARE SUPPLIED WITH TV, PLEASE USE THOSE IN PREFERENCE

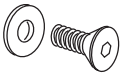
a x2 Screw-Washer sets (M8x25mm) - Use 5mm Allen Key (D)



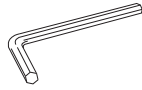
Counter-Sunk Screws (M6x12mm)



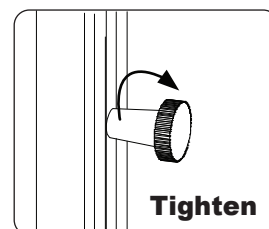
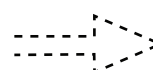
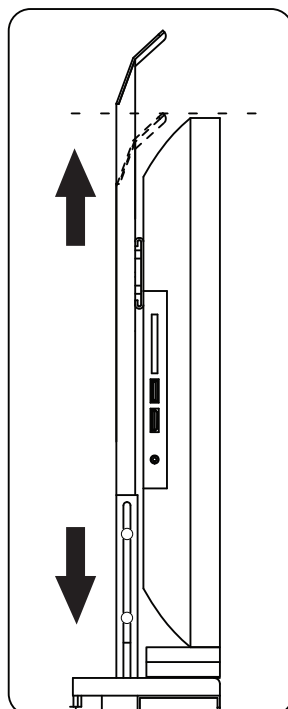
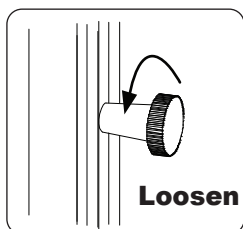
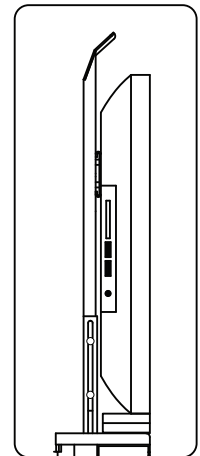
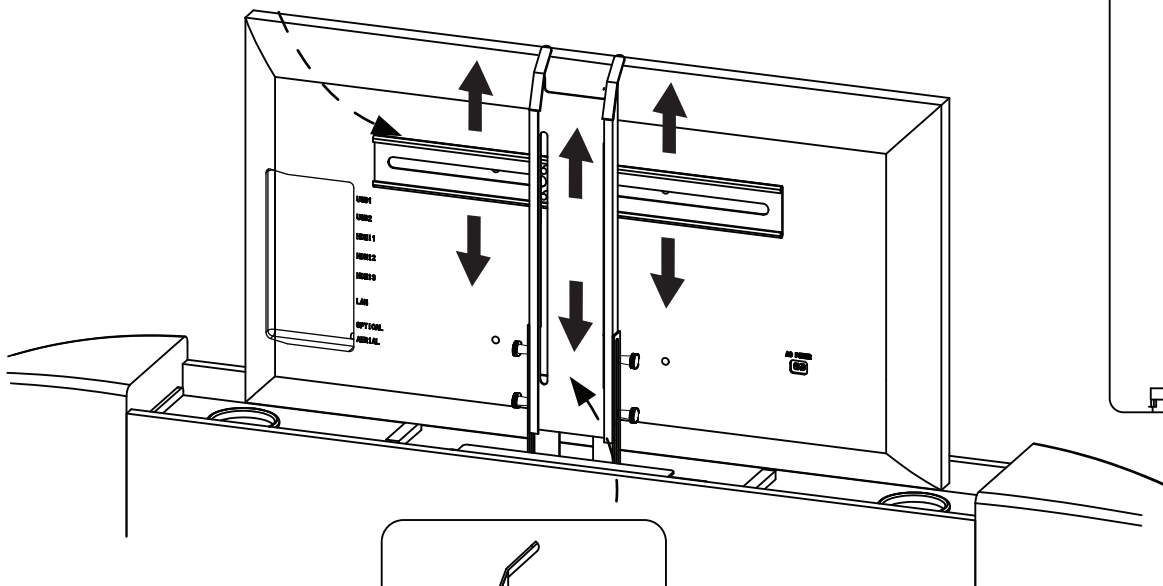
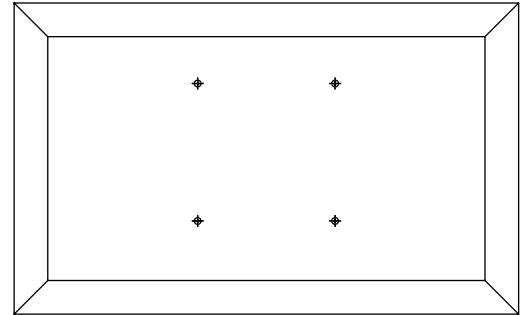
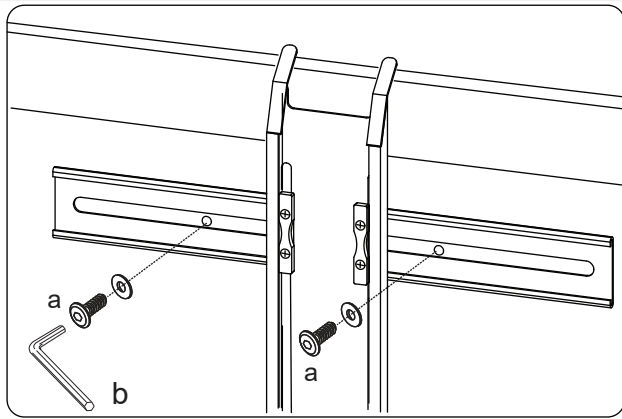
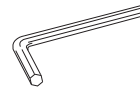
Counter-Sunk Screws (M4x12mm)



b x2 Allen Key (4mm)



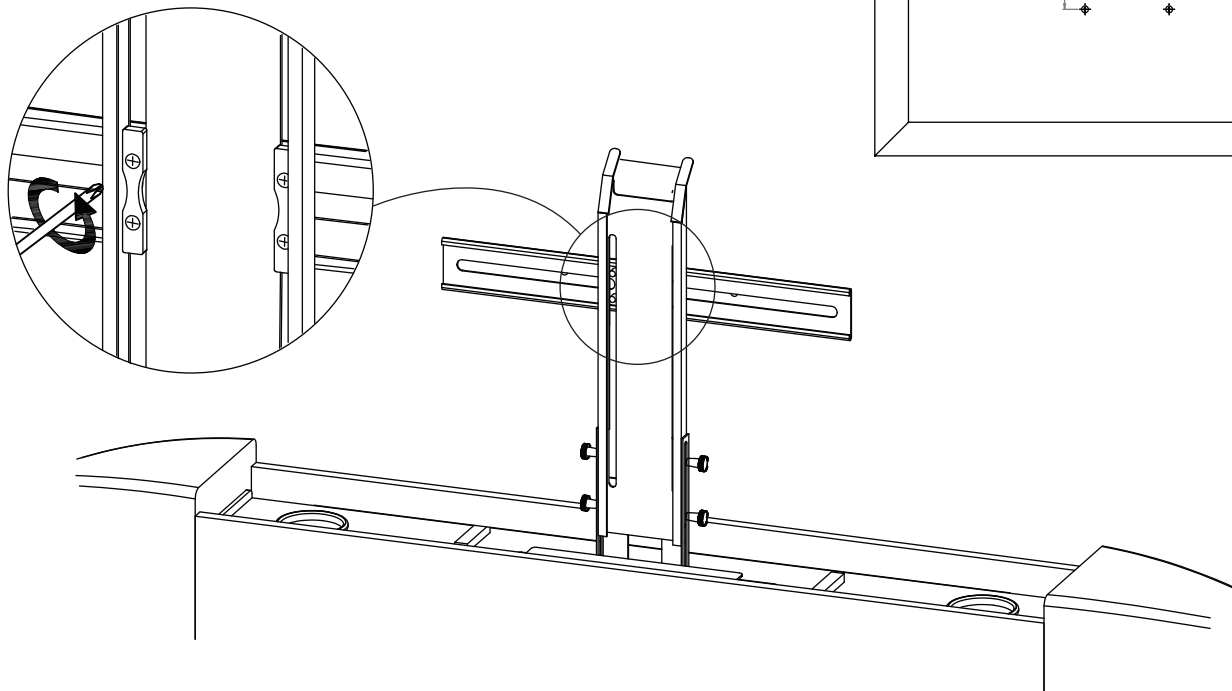
Allen Key (2.5mm)



## TV Installation - 100x100 Vesa Fixing

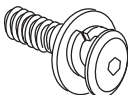
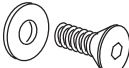
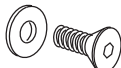


Stage  
12a

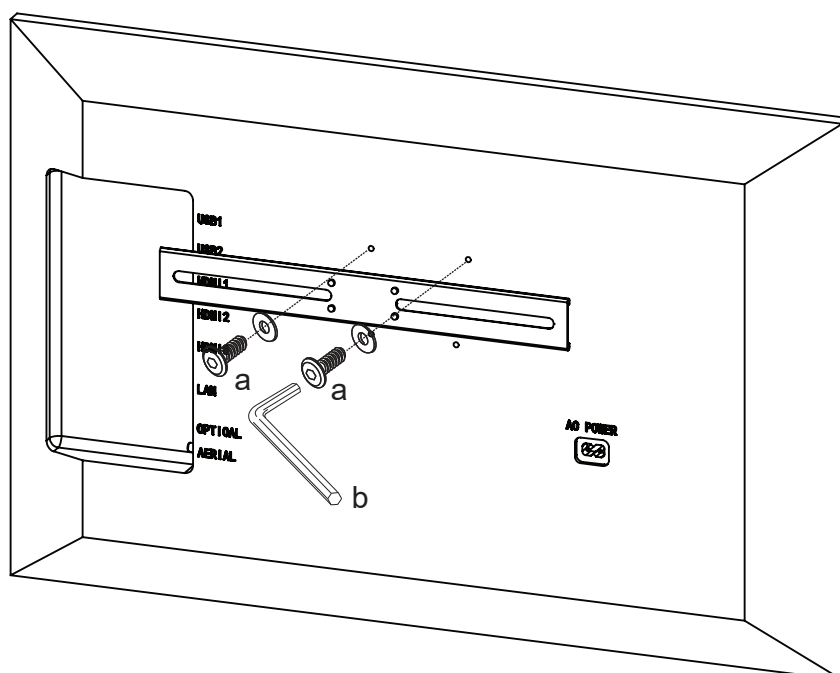
REMOVE CROSS-BRACKET  
AND FIX DIRECTLY TO BACK OF TV

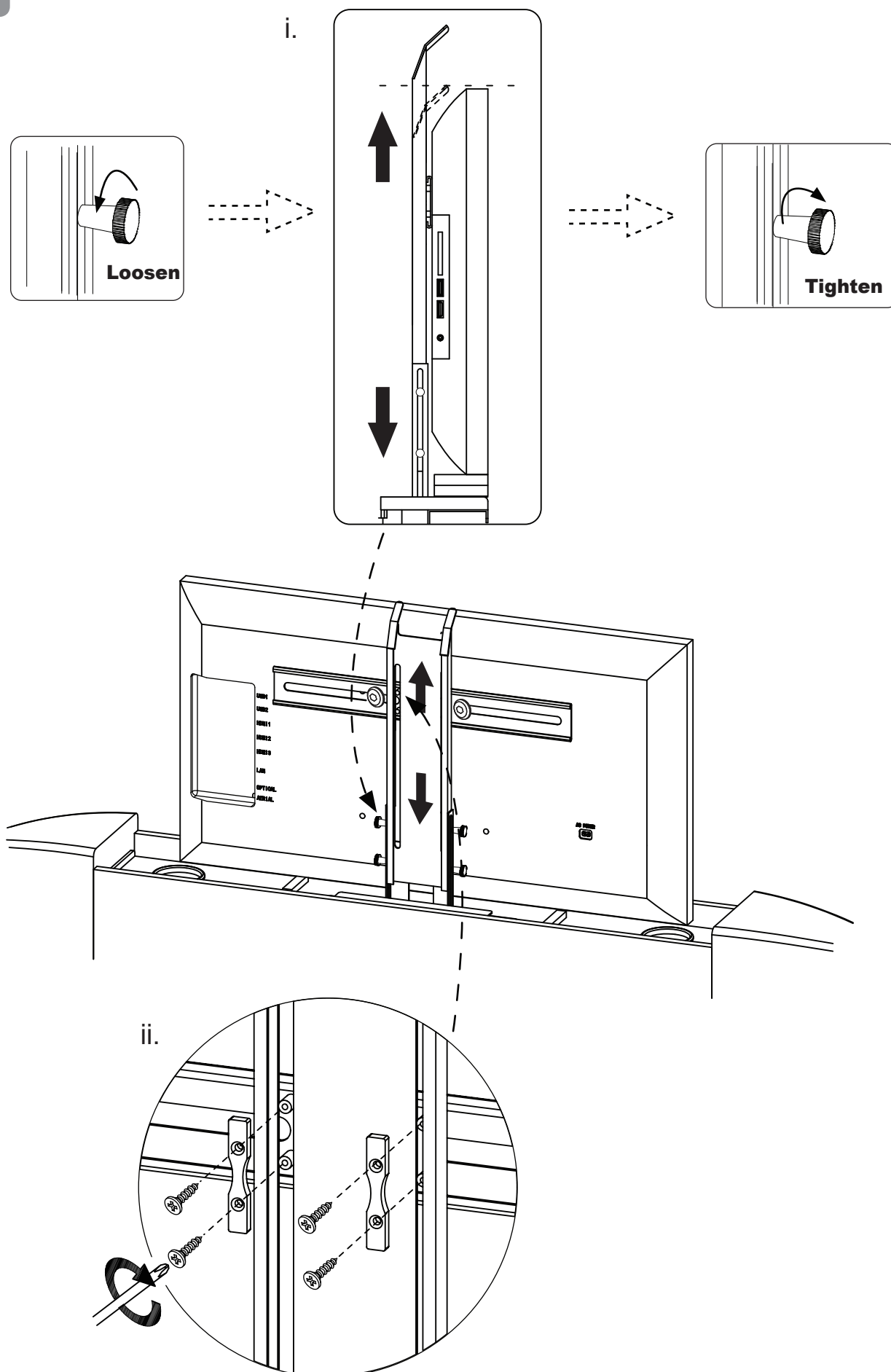


Stage  
12b

IF SCREWS ARE SUPPLIED WITH TV, PLEASE USE THOSE IN PREFERENCE

- a x2 Screw-Washer sets (M8x25mm)  
Use 5mm Allen Key (D) 
- Counter-Sunk Screws (M6x12mm) 
- Counter-Sunk Screws (M4x12mm) 
- b x2 Allen Key (4mm) 
- Allen Key (2.5mm) 



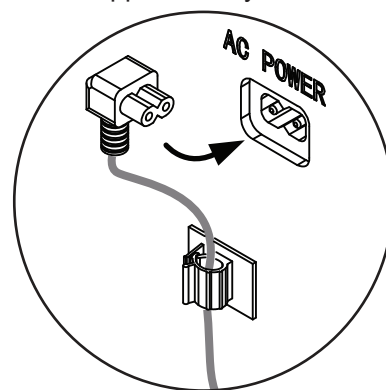


## Electrical & Cable Connections

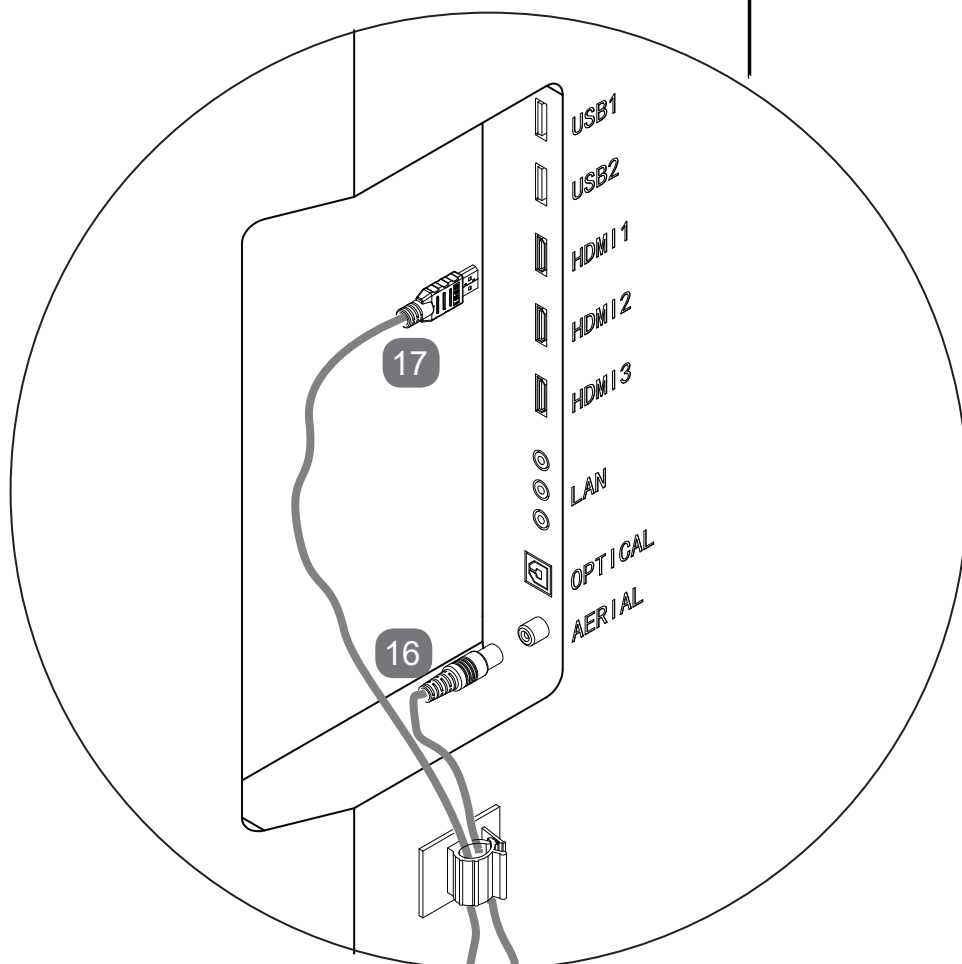
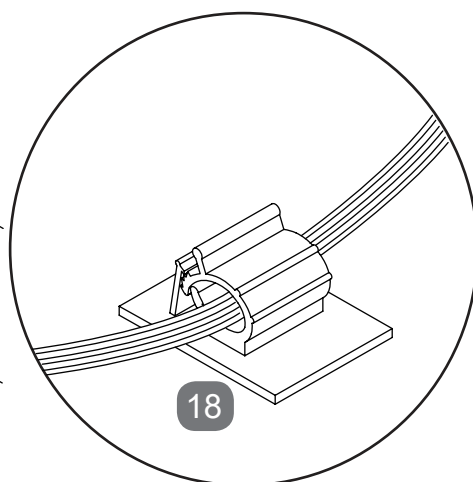
Stage  
13

Note: For illustration purposes only, TV connections may vary.

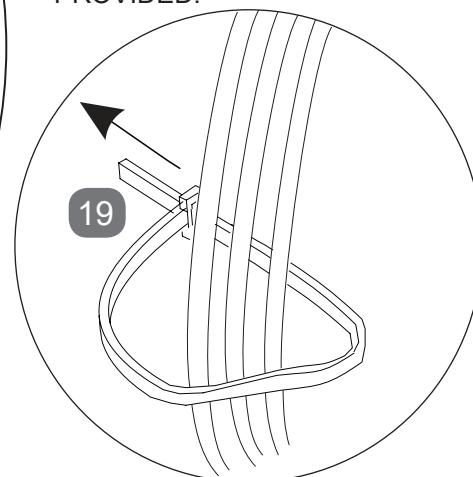
TV Power Lead  
supplied with your TV

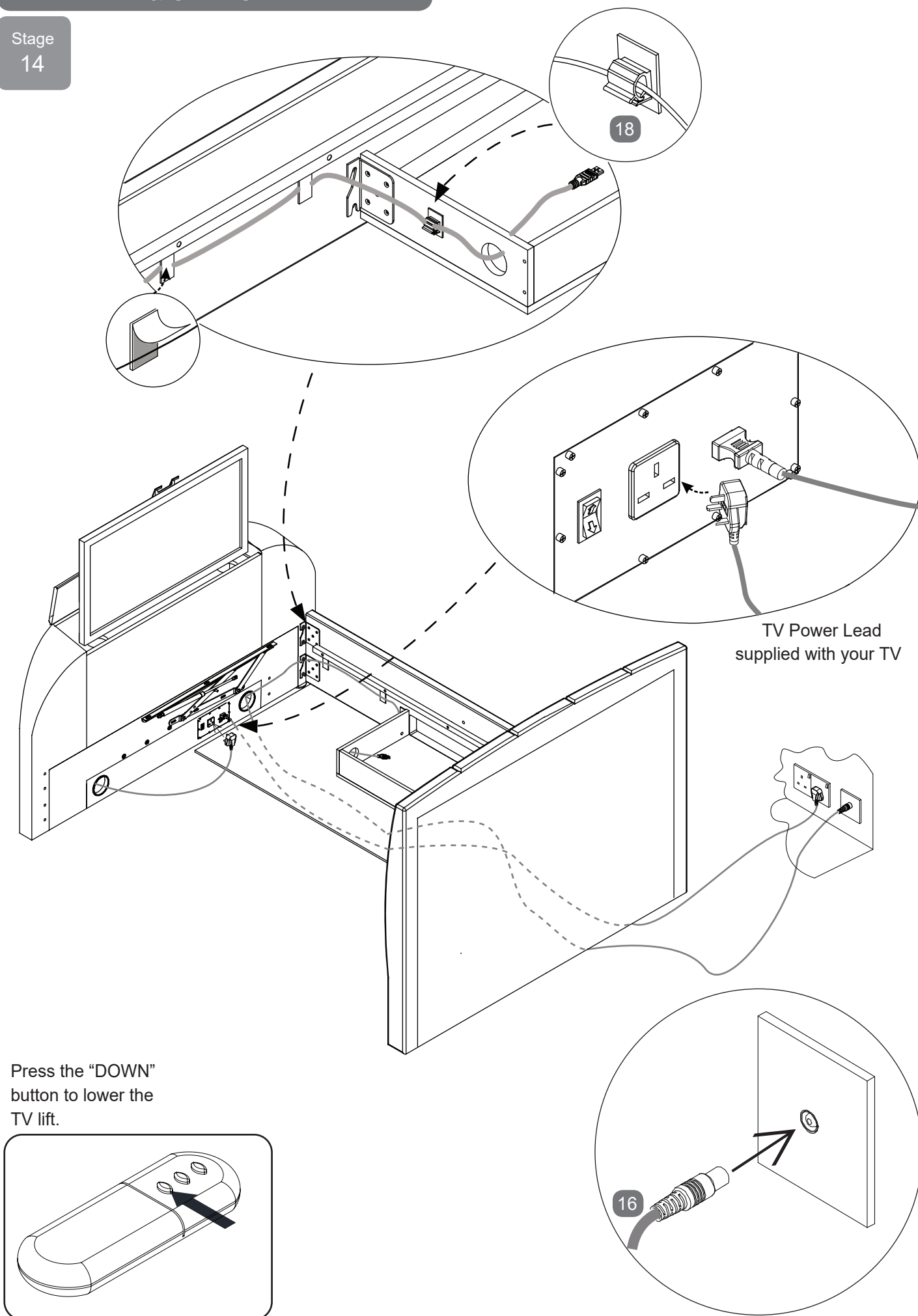


Keep wires tight - peel off cover from cable clips & adhere to back of TV.



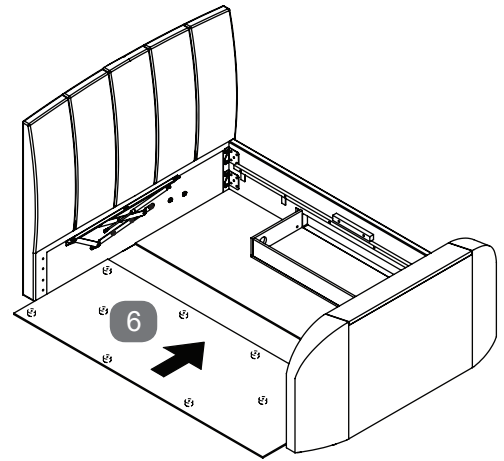
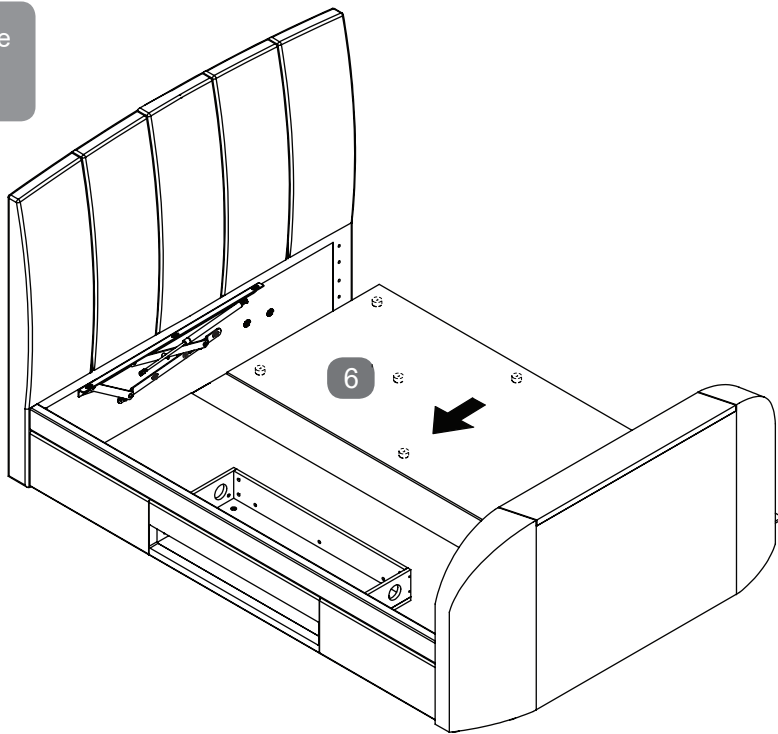
PLUG IN - KEEP ALL CABLES  
TIGHT - USE CLIPS & TIES  
PROVIDED.





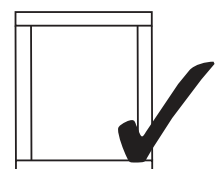
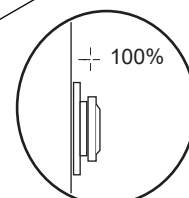
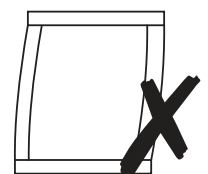
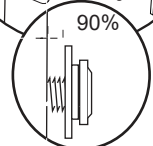
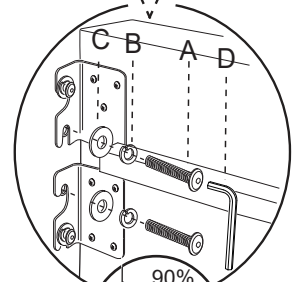
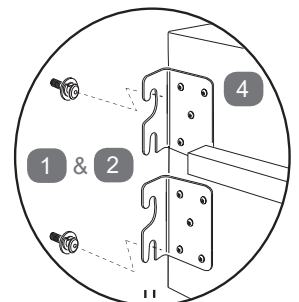
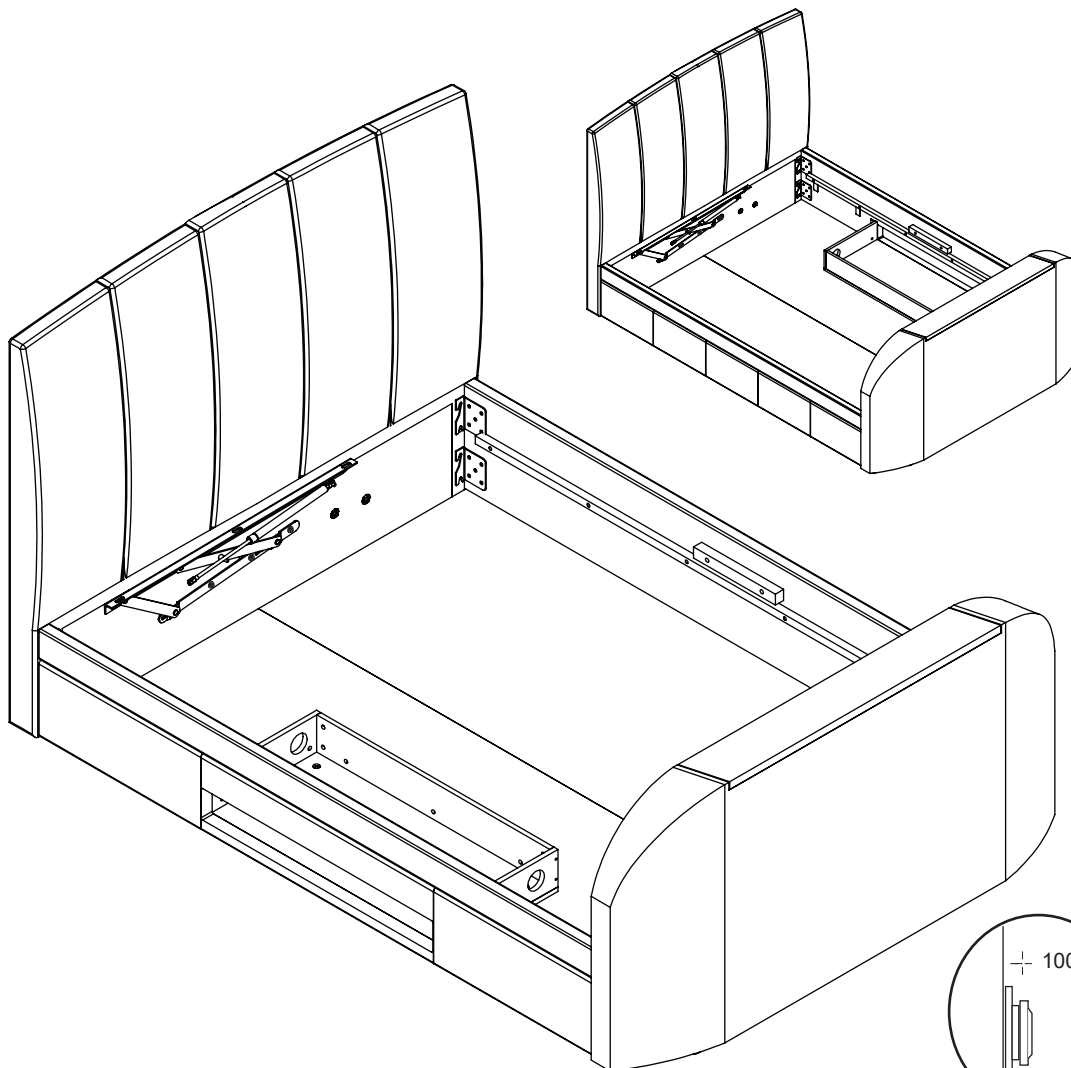


Stage  
15



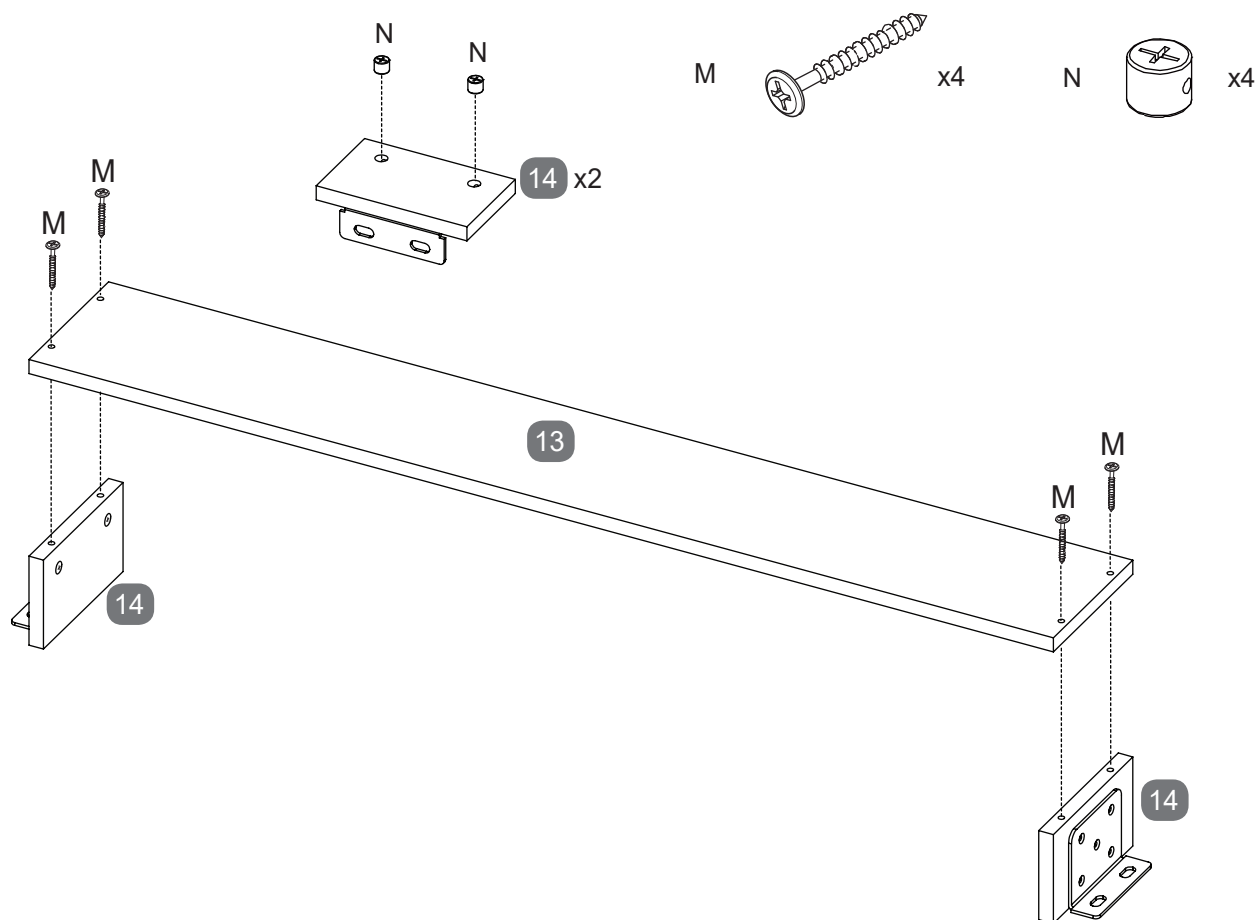
Fitting Plain Side Rail to opposite side - Use Pack 'A'

Stage  
16



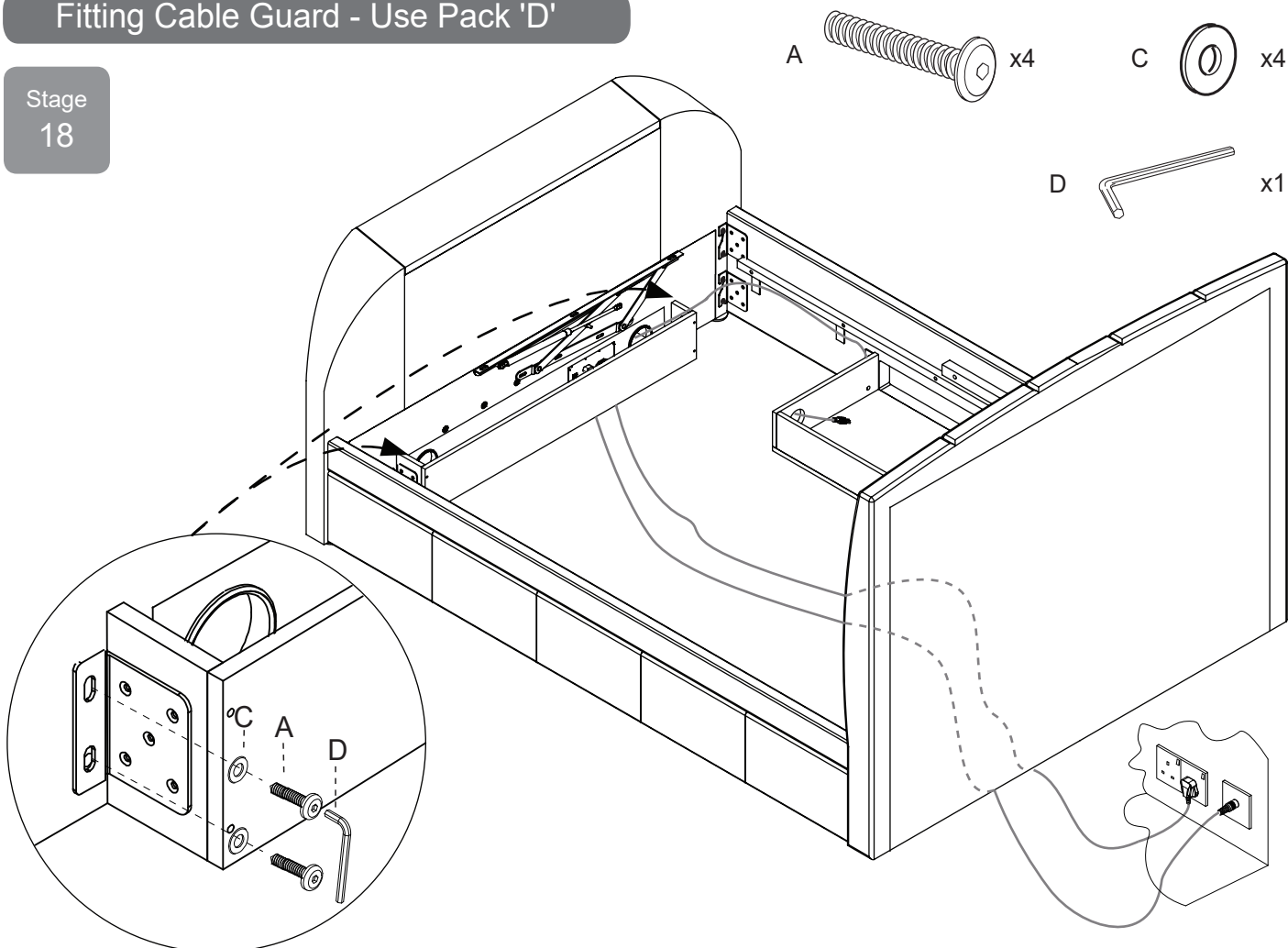
Assembling Cable Guard - Use Pack 'D'

Stage  
17



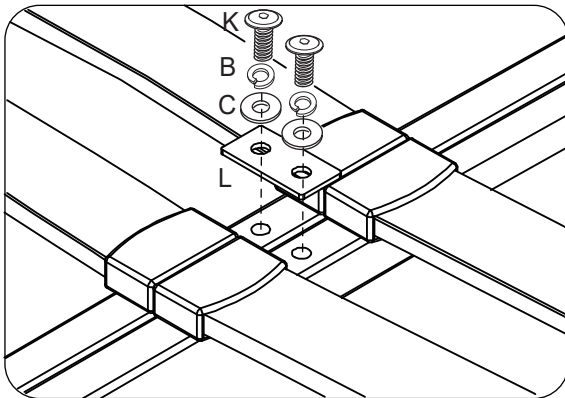
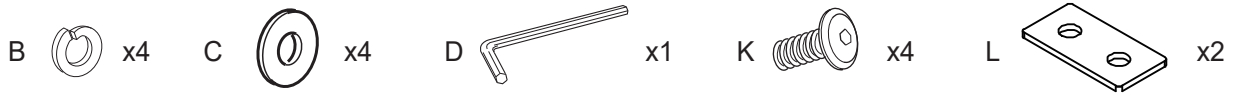
Fitting Cable Guard - Use Pack 'D'

Stage  
18



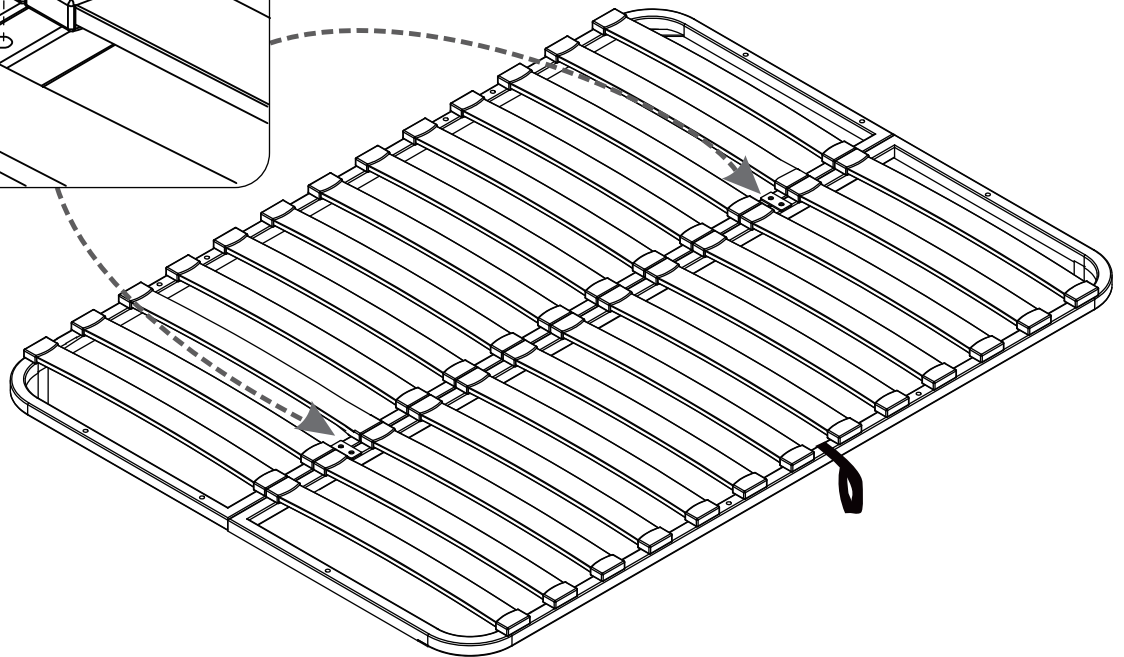
## Assembling Slat Frame - Use Pack 'D'

Stage  
19

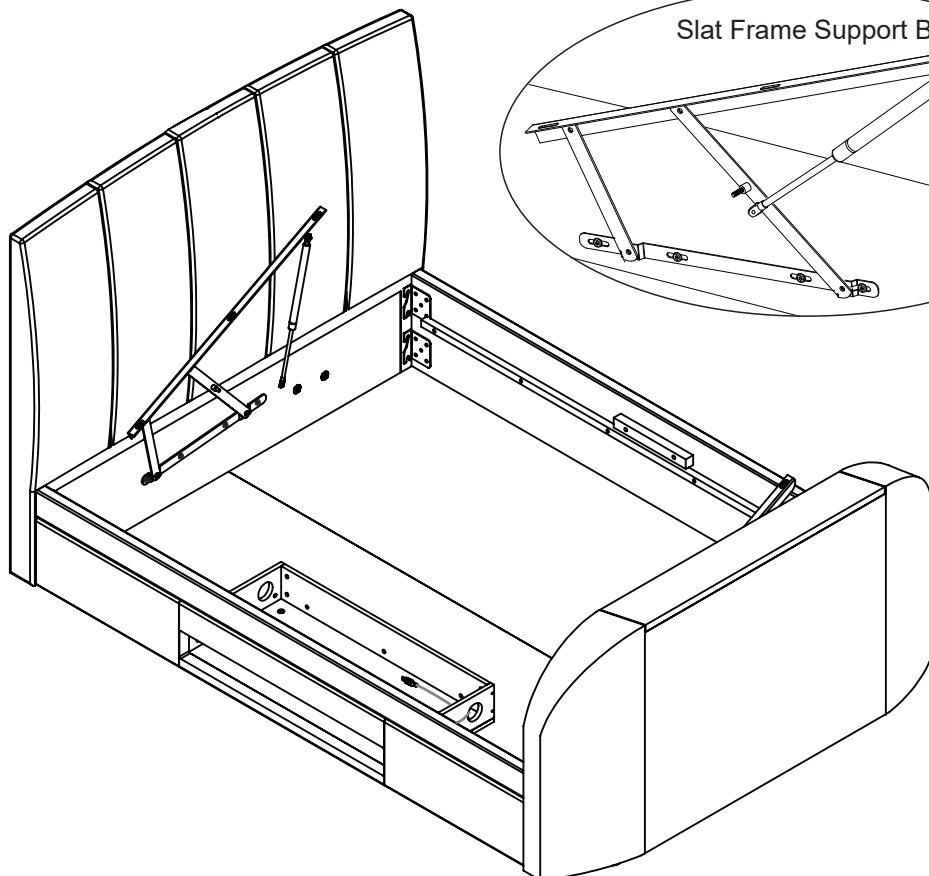


Using four sets of bolts (K), spring washer (B) & flat washers (C) fit two pieces of the metal plate (L) into threaded inserts on top of the frame. Using Allen key (D), tighten all four bolts 100%.

x2



Stage  
20

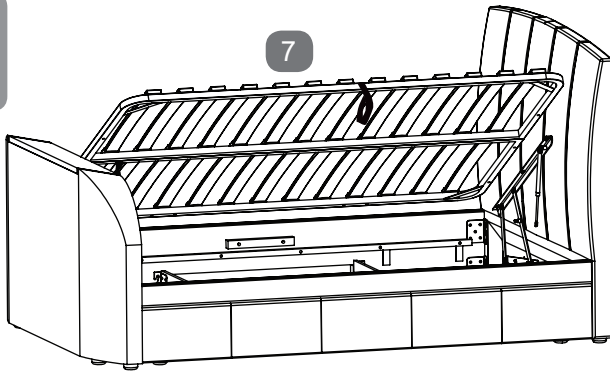


Slat Frame Support Bar

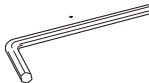
1 & 2

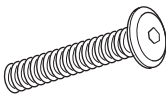
## Assembling Slat Frame - Use Pack 'D'

Stage  
21



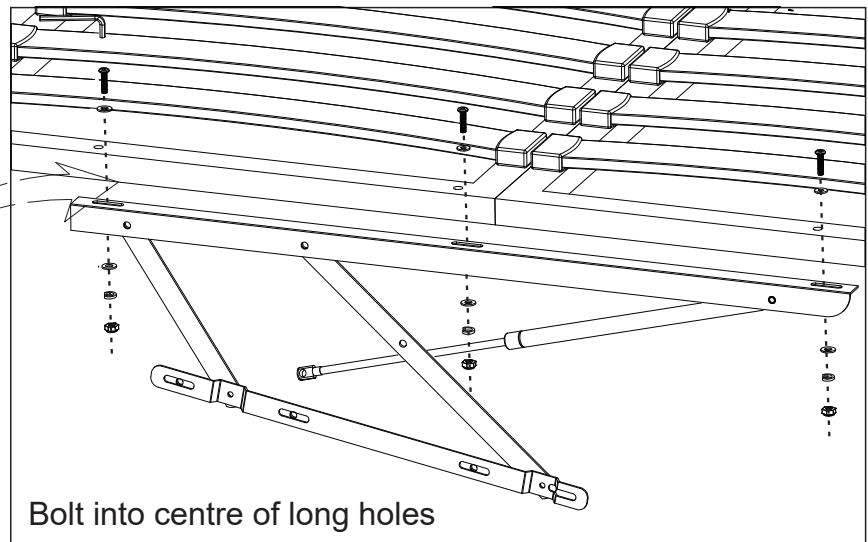
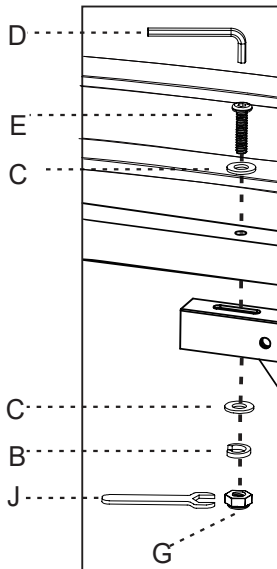
B  x6 C  x12

D  x1

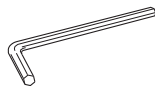
E  x6

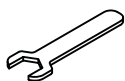
G  x6

J  x1

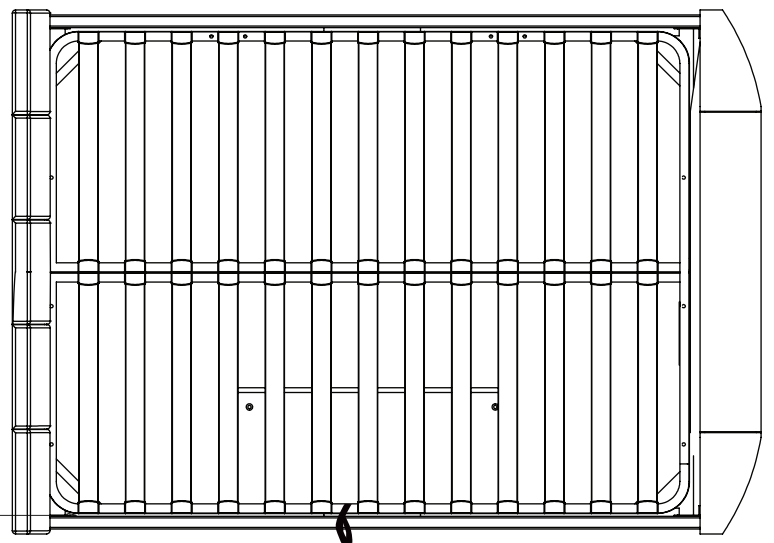
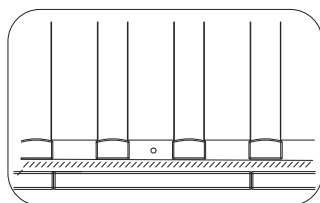
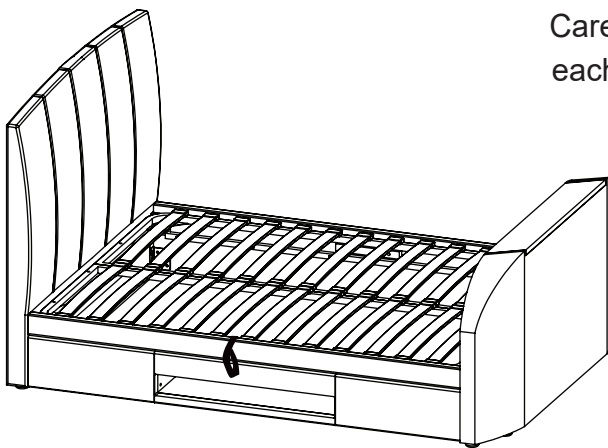


Stage  
22

D  x1

J  x1

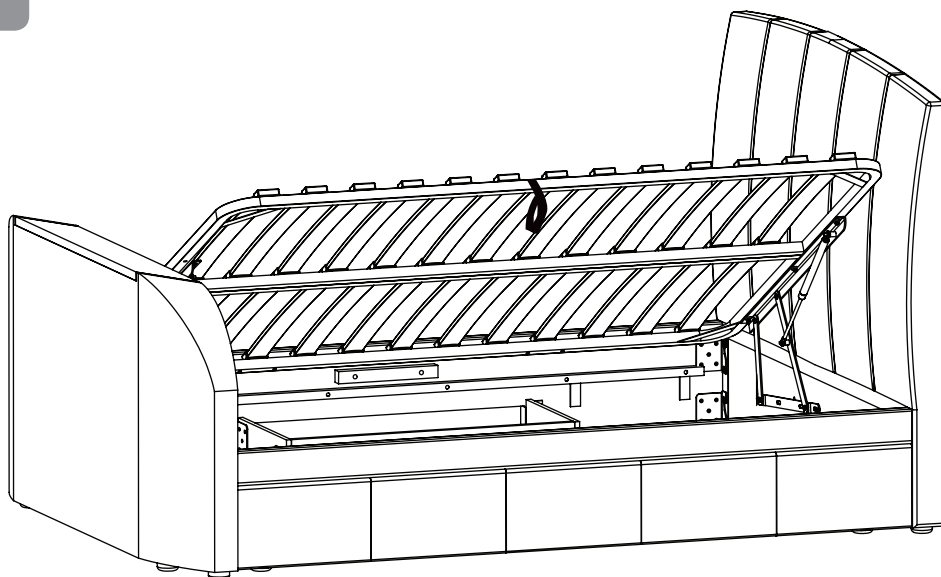
Carefully lay frame down. Make sure there is an even gap each side of about 8mm, as in the sketch.



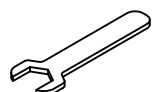
Hold frame then tighten all six bolt sets 100% using spanner (J) & Allen key (D).

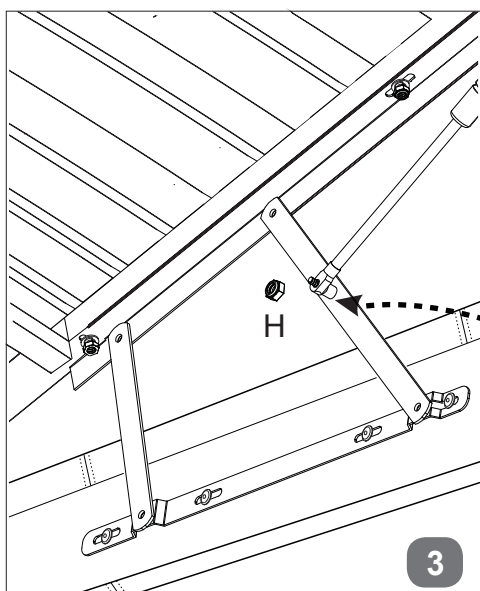
## Fitting Gas Lift Pistons - Use Pack 'D'

Stage  
23



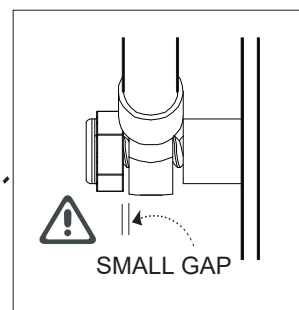
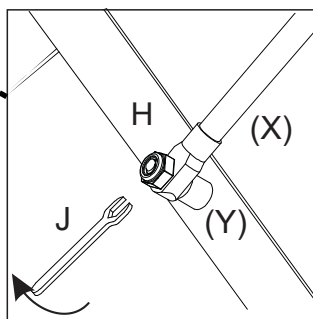
H  x2

J  x1



During this next step, the assistant should hold up the slat frame.

On side rails (3&4) slide gas-lift piston stems (X) onto the axles (Y) then fit the flange lock-nuts (H).



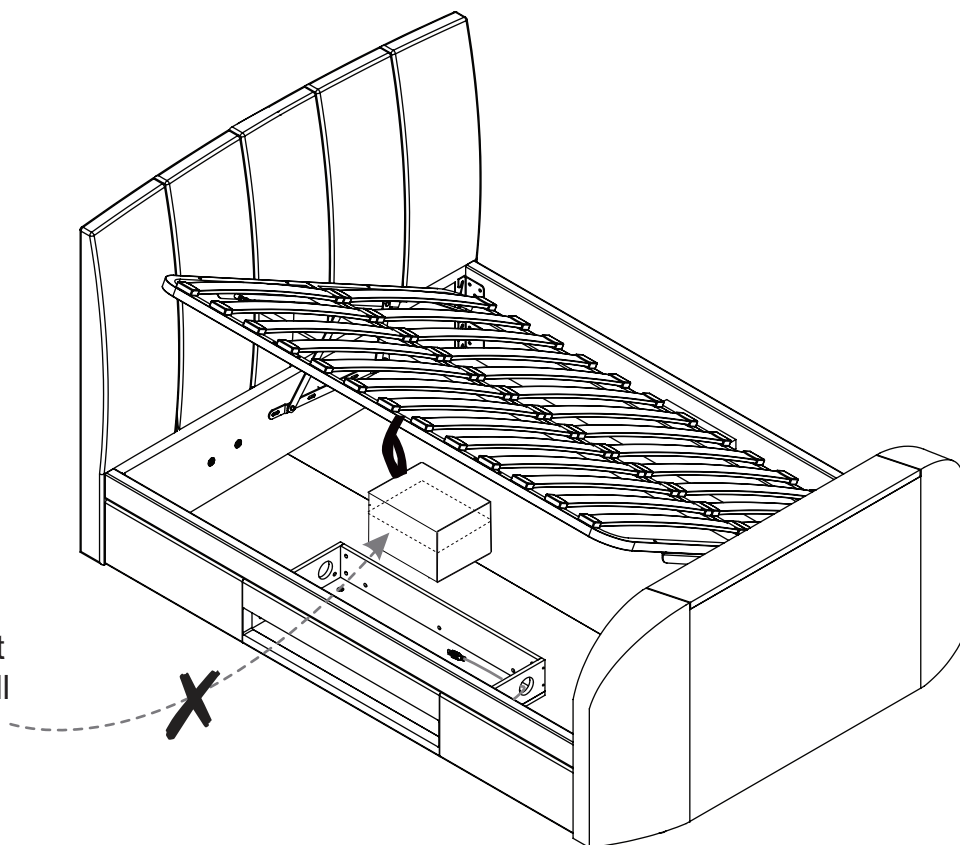
**Tighten nuts with spanner (J) - but DO NOT over-tighten. A small gap is left so stems can move freely - this is important - see sketch above.**



## Safety Notice

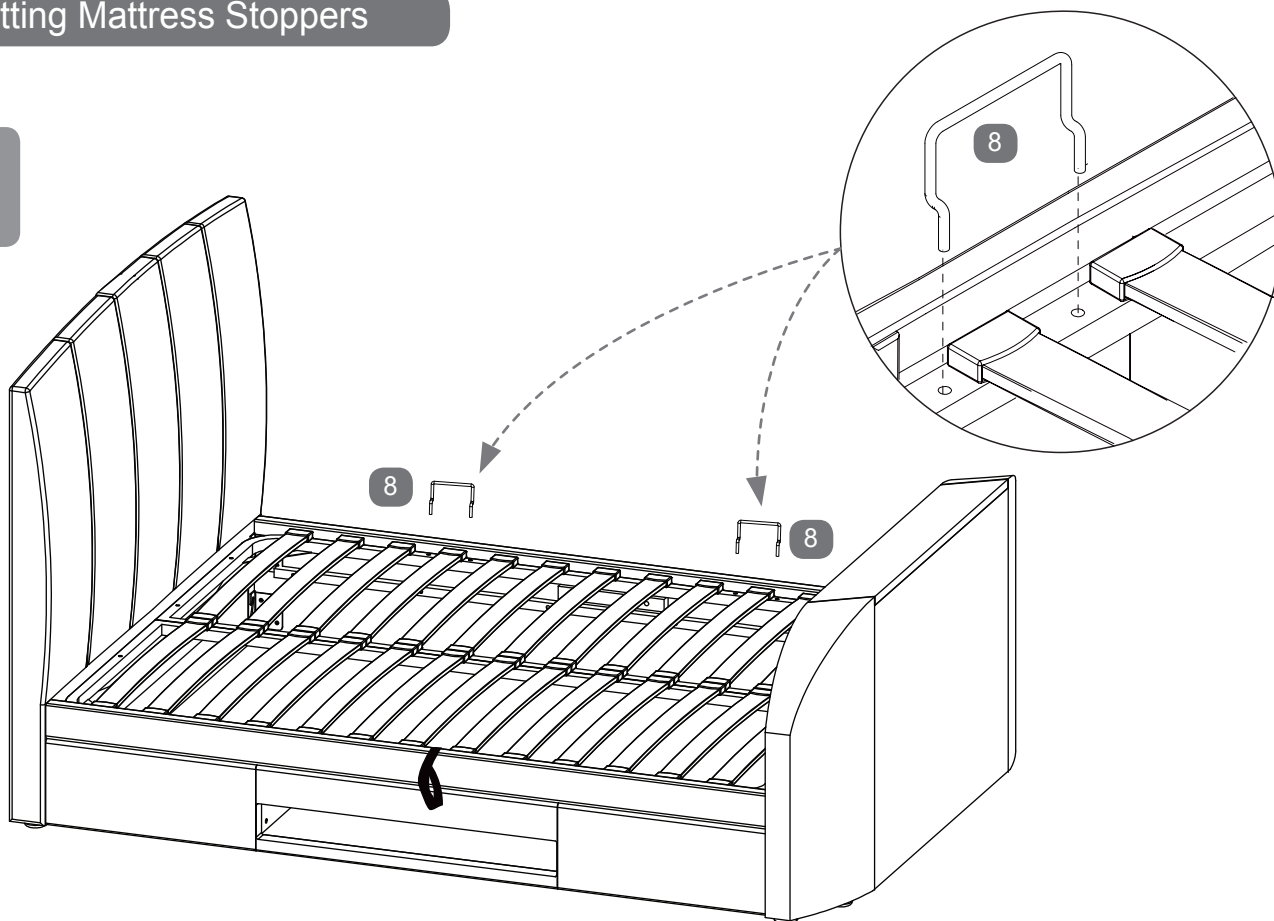
Stage  
24

Note: Be very careful what you store under the bed - the top of an item, like a suitcase or a box, must not touch the slats or they shall be damaged. Maximum storage height is 260mm.



## Fitting Mattress Stoppers

Stage  
25





## GENERAL INFORMATION

It is very important not to place any vessel containing liquids, e.g. drinks or vase of flowers, on top of the TV footboard which may accidentally spill and enter the TV compartment as this could cause damage to the TV and/or the TV lifting equipment.

If this happens, please contact Customer Services - ring 0344 292 00 00.

Do not expose the bed to an undue level of heat - keep away from radiators.

Never allow anyone to sit on the foot end of the bed - keep children well away from moving parts.

To keep the bed clean, we recommend that it be wiped over with a slightly dampened cloth or if fabric use a light vacuum cleaner; disconnect power before cleaning.

Supplied with the TV bed is a remote control to operate the TV Lift and when you fit your own TV there is a remote control to operate that as well.

Both these remotes use batteries, there are strict controls for disposal of batteries - your local council can advise on how to safely dispose of them.

Never burn batteries on an open fire as they could explode.

## IMPORTANT POWER INFORMATION

It is essential that the Mains Power Lead (15) is connected to an earthed socket be it a wall socket or extension lead - otherwise there is risk of damage or even electric-shock.

The socket providing the power must be accessible at all times in case you need to switch off the power quickly.

During an electrical or lightening storm - disconnect the power completely as a precaution.

Always un-plug the power when going on holiday or when the bed is not used for an extended period.

If you have young children in the home always disconnect the power at the wall socket for extra safety.

Power outlets, extension leads or adapters must not be overloaded beyond their limit - this can result in fire or electric shock. Cables leads supplied with this bed, or other approved mains powered extension leads used to power your own equipment, must not be placed where they can be walked on - this is dangerous and could lead to accidents.

Do not interfere with or modify any cables already fitted and do not add any extra media leads unless they are routed through the ducts as shown in Stage 10.

All leads must be tightly connected to back of TV using clips provided (18), never hanging loose.

Never touch moving parts or any part of the equipment - if something needs to be checked, disconnect the power first.

Do not insert anything into the footboard as this could seriously damage the TV and/or the TV lifting equipment and could, if done carelessly, cause serious damage or injury.

If the equipment doesn't operate normally or if there is an unusual noise, disconnect the power.

**IMPORTANT:** Care should be taken when connecting electrical items. If you are in any doubt about the connections please consult an approved electrician.

## TELEVISION INSTALLATION

Please follow the television installation instructions below.

Raise the TV Lift by pressing the Top button of the remote control.

Connect the Aerial & HDMI cable (16&17) by passing down the appropriate duct - see Stage 10.

Connect the TV to the mounting bracket as in Stage 11 or 12, as appropriate.

If necessary mounting bracket can easily be adjusted up or down to align with upper fixing holes on rear of TV.

Connect the TV Power Lead (supplied with TV) by passing plug down one of the ducts, plugging it into the adapter then into the TV power socket which is on the face of footboard - see Stage 14. This socket is only to be used for the TV as the supply is not constant.

If required, connect your own media cables through either of the ducts - connect your media equipment when ready.

Please use the cable clips (18) & cable ties (19) to make certain there are no loose wires to snag.

The TV can now be operated following the TV Operation Guide supplied with your TV.

When finished viewing, lower the TV back into the footboard by pressing Down button of the remote control.

The TV will retract into the footboard automatically - power shall be turned off when TV reaches the bottom.

When the Up button is pressed - the TV Lifting Column rises and power to the TV turns back on automatically.

## TROUBLE SHOOTING

If your equipment does not operate please check all the power connections to the wall and to the socket in the footboard.

Make sure TV is switched on. (Note: TV will only work when it is in the up position).

If you cannot resolve an issue or still have a problem or need help, please contact Customer Services for advice.