

PLEASE READ this sheet prior to assembly to familiarise yourself with the various stages of construction. Carefully open the pack supplied and check the contents against the parts and fittings check list.

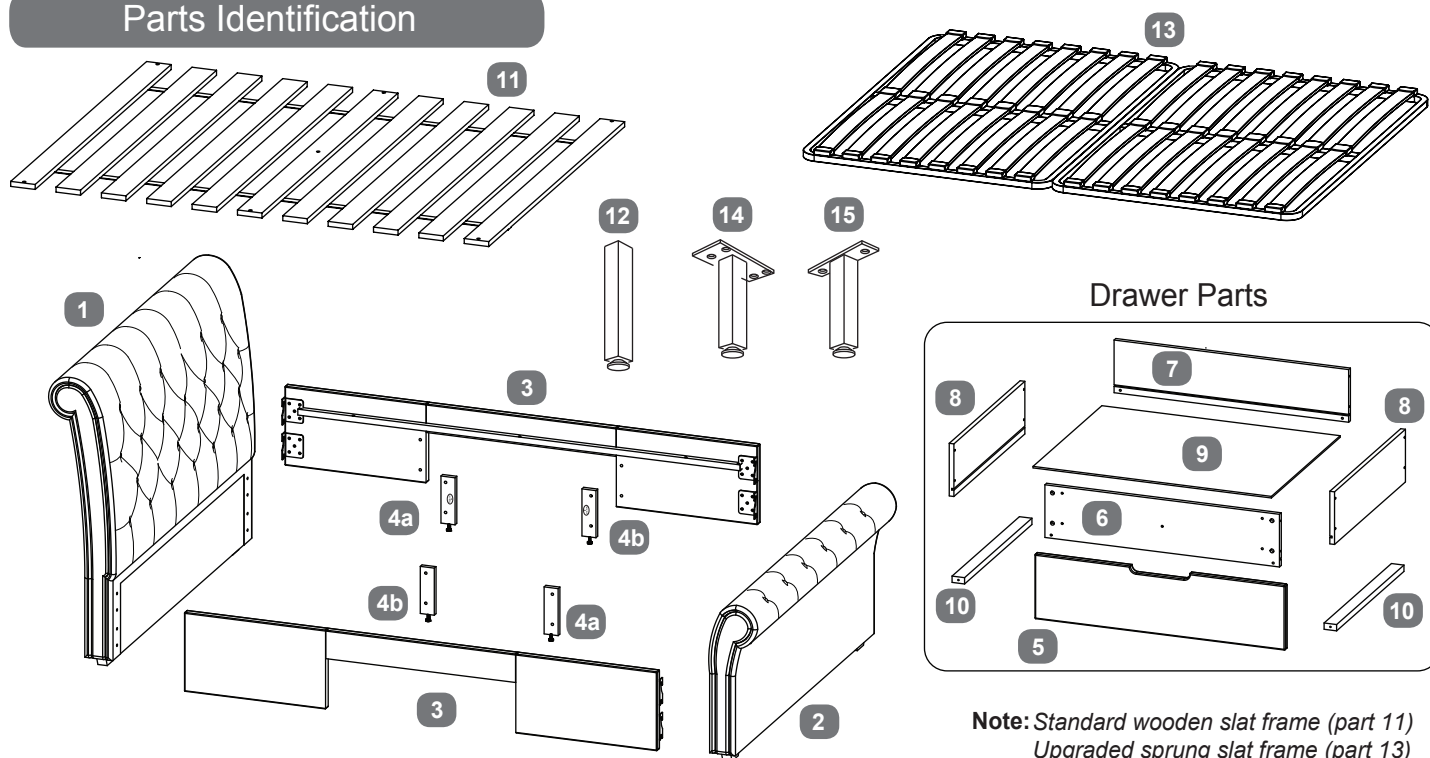
Do not destroy any of the packaging until you are certain that you have all the necessary parts for the assembly.

Please ensure that the packaging is disposed of in a safe environmentally friendly way.

CAUTION: There are small components used in the construction of this unit. These loose items should be kept away from young children during assembly, to avoid the danger of choking.

IMPORTANT: BEFORE STARTING TO ASSEMBLE THE BED - PLEASE READ THESE INSTRUCTIONS CAREFULLY.

Parts Identification



Note: Standard wooden slat frame (part 11)
Upgraded sprung slat frame (part 13)

Parts Checklist

Ref.	Description	Qty	Ref.	Description	Qty
1	Headboard	1	9	Drawer Bottom Panels	2
2	Footboard	1	10	Drawer Bottom Support Rails	4
3	Side Rails	2	11	Wooden Slat Set	1
4a&4b	Adjustable Support Legs	2 Prs	12	Wooden Slat Set Support Leg	1
5	Drawer Face Panels	2	13	*Upgraded Sprung Slat Frame*	1
6	Drawer Front Panels	2	14	*Sprung Slat Frame Centre Support Leg*	1
7	Drawer Back Panels	2	15	*Sprung Slat Frame Support Legs*	2
8	Drawer Side Panels	4			

**Only supplied if upgraded sprung slat frame system chosen
Legs (14&15) only supplied with sprung system*

Fittings Checklist

HARDWARE NEEDED FOR BED ASSEMBLY (PACK A)

Code	Description	Qty	Code	Description	Qty
A	Bolts (M8x30mm) for fitting side rails (3) to headboard & footboard (1&2).	x16	D	Allen Key (for M8 bolt)	x1
B	Spring Washers (for M8 bolt)	x16	E	Bolts (M8x45mm) for fitting adjustable support legs (4) to side rails (3).	x8
C	Flat Washers (for M8 bolt)	x24			

HARDWARE FOR FITTING WOOD SLATS (PACK B)

Code	Description	Qty	Code	Description	Qty
F	Bolts (M6x40mm) for fitting the wooden slat set (6) to side panels (3&5)	x6	J	Allen Key (for M6 bolt)	x1
G	Sleeve Nuts - M6	x6	K	Spring Washers (for M6 bolt)	x6
H	Flat Washers (for M6 bolt)	x7	S	Screw (5x50mm) for fitting slat support leg (12)	x1

EXTRA HARDWARE NEEDED WHEN FITTING UPGRADED SPRUNG SLAT FRAME

Note: The following fittings will be found in the box which contains the upgraded metal frame itself.

L	Bolts (M6x15mm) for fitting support legs (14&15) to the sprung slat frame (13)	x8	14	Sprung slat frame centre support leg	x1
15	Sprung slat frame support legs	x2			

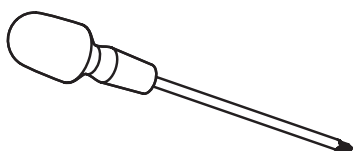
HARDWARE NEEDED FOR DRAWER ASSEMBLY (PACK C)

Code	Description	Qty
M	Screws (5x50mm) for assembling drawer panels	x24
N	Screws (3.5x16mm) for fitting wheel (Q) to wooden drawer support rails.	x32
P	Screws (4x30mm) for fitting drawer face panel (5)	x10
Q	Plastic Barrel Nuts	x24

WHEELS FOR DRAWER (PACK D)

Code	Description	Qty
R	Drawer Wheels	x8

Additional Tools Required



Cross-head Screwdriver

Care & Maintenance

In the unlikely event of missing or damaged parts, please contact the customer service team on 0344 292 00 00. When calling this number, please quote the part code reference numbers shown in this leaflet when requesting spare or replacement parts.

General Hints & Tips



Please retain your assembly instruction and tools provided for future use. Periodically check that all bolts are still tight.



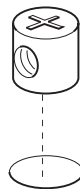
This assembly requires two persons.



45 MINS

Approximate time to assemble this product

Intersecting Hole

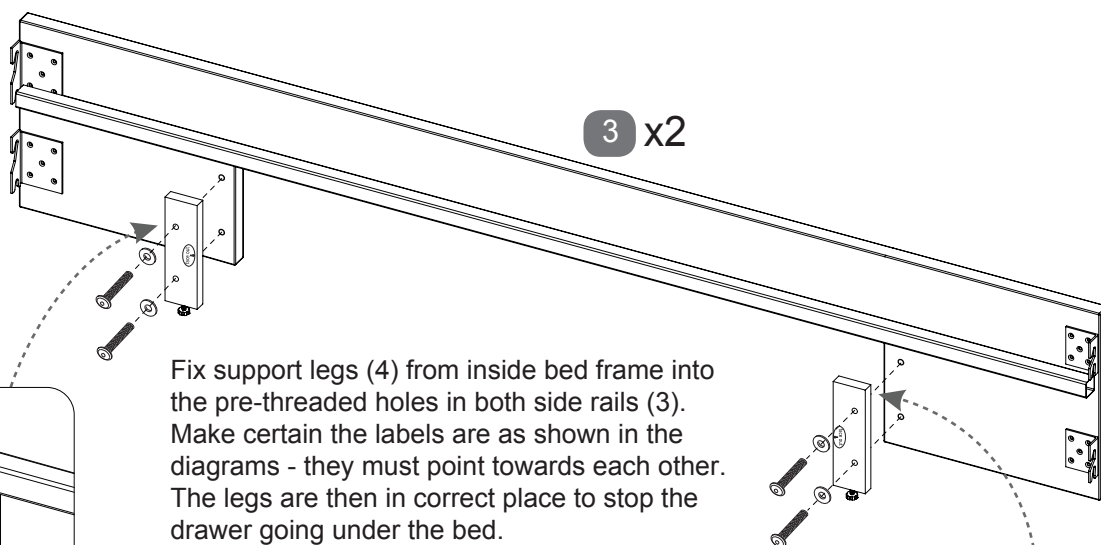
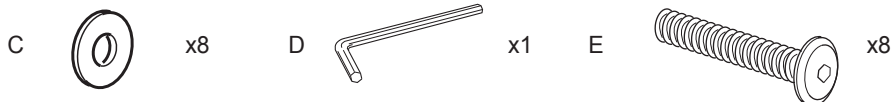


When they are supplied and are part of the assembly of this bed, ensure that the barrel nuts are fitted the correct way so the hole in the nut is facing towards the intersecting hole in the panel.

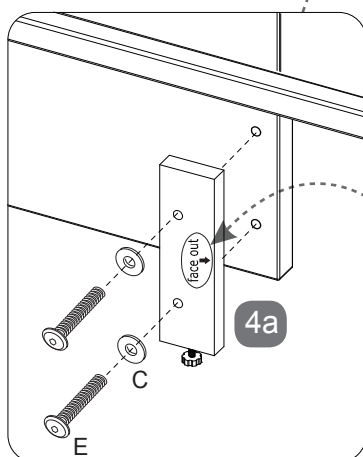
We recommend the bed is assembled in the room it shall be located in.

Bed Assembly - Use Pack 'A'

Stage
1

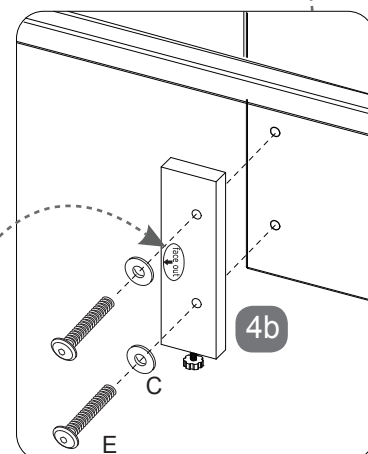


Fix support legs (4) from inside bed frame into the pre-threaded holes in both side rails (3). Make certain the labels are as shown in the diagrams - they must point towards each other. The legs are then in correct place to stop the drawer going under the bed.



face out

ARROWS ON LABELS POINT TOWARDS EACH OTHER



face out

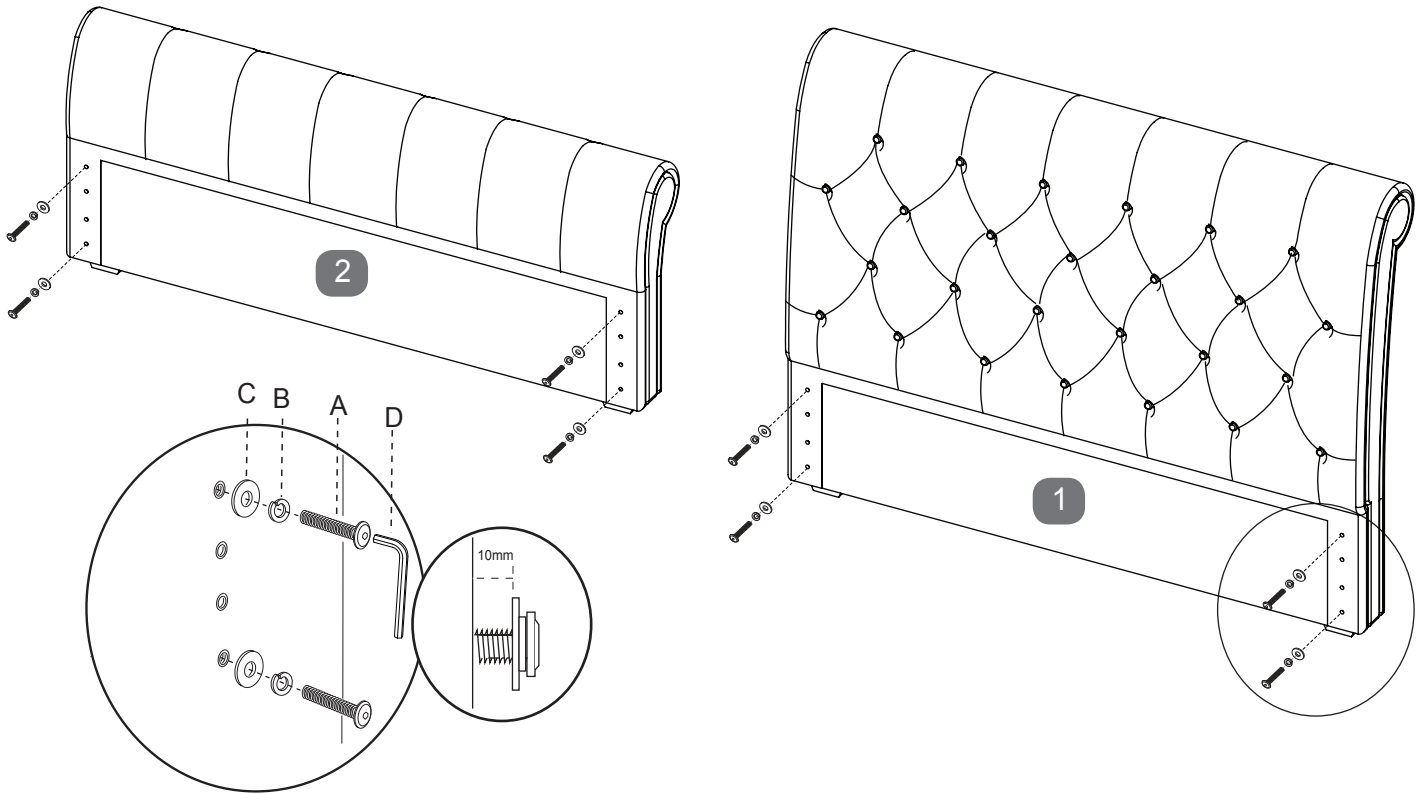
Adjustable Feet



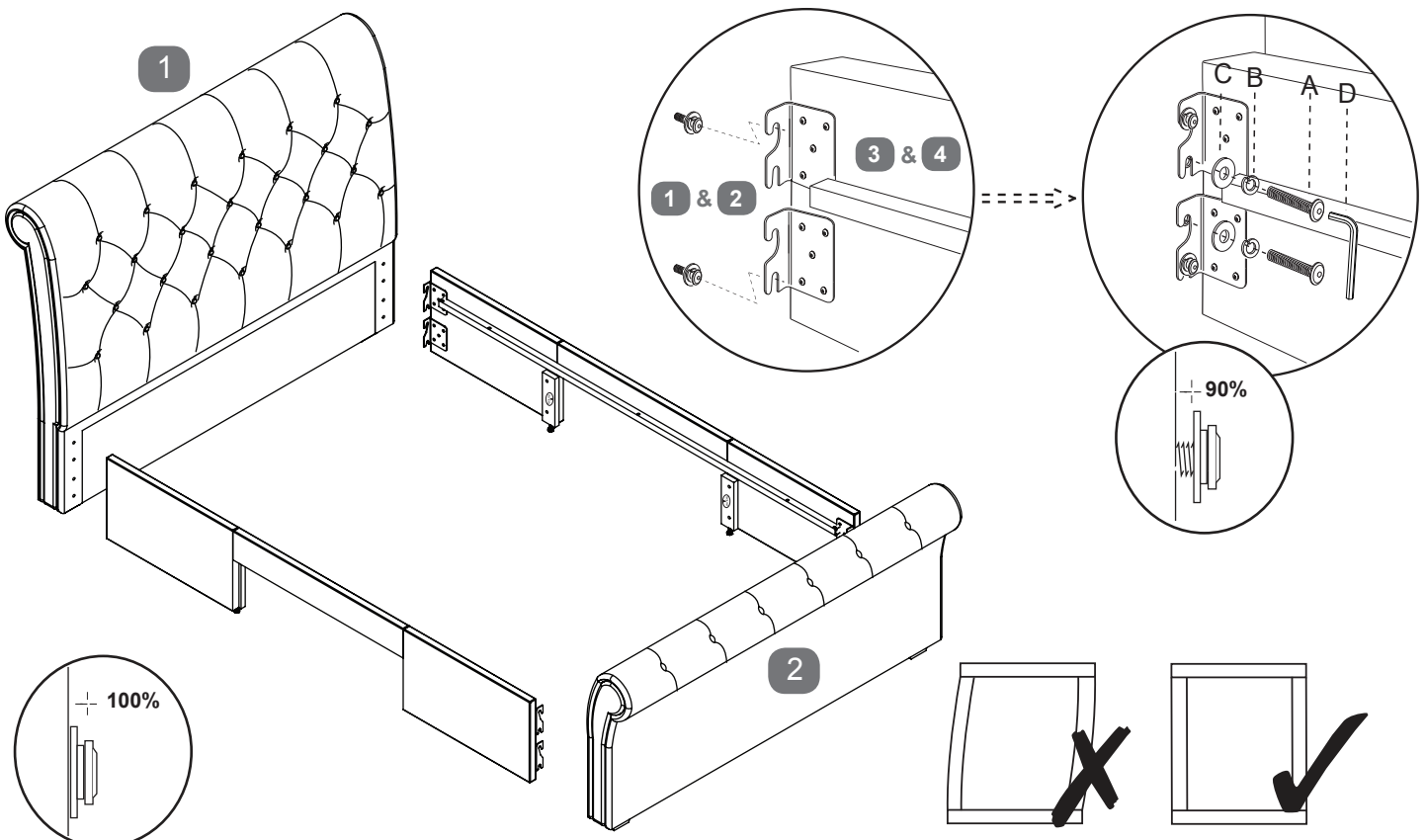
Carefully adjust feet so they just touch the floor keeping side panels level when bed is in use.

Bed Assembly - Use Pack 'A'

Stage
2



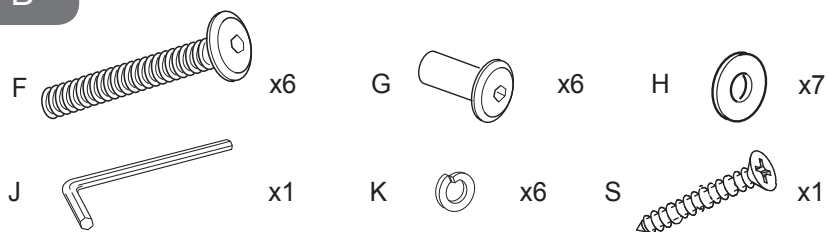
Stage
3



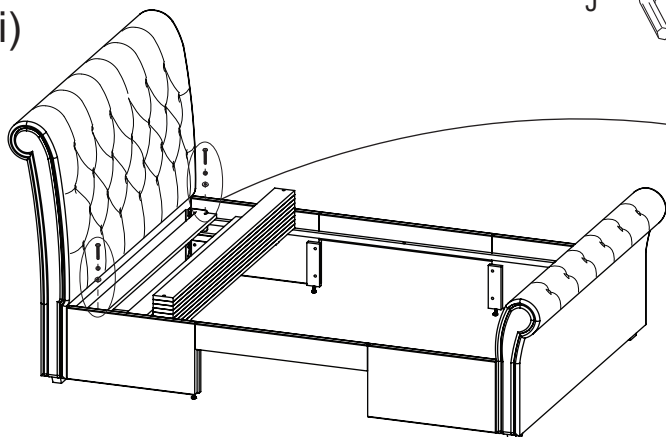
Fitting Wooden Slat Set - Use Pack 'B'

Stage 4a

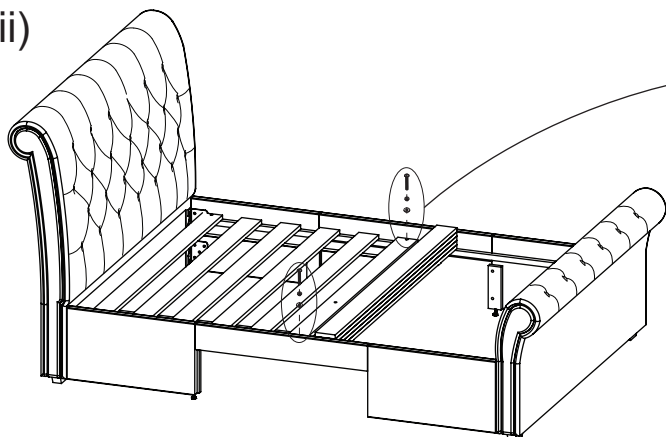
Carefully lay the wooden slat set on the metal supports, on each side panel.



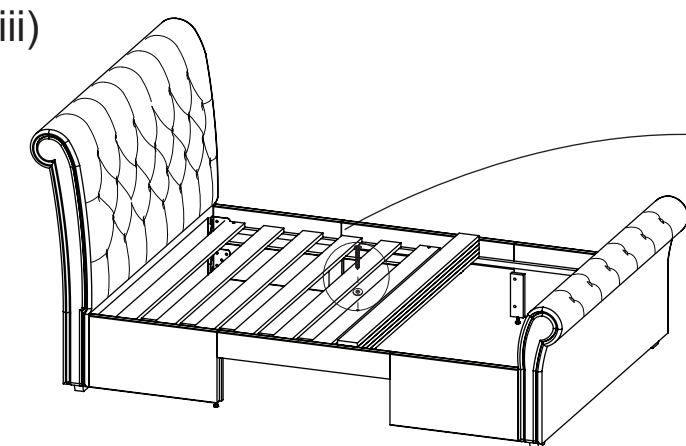
i)



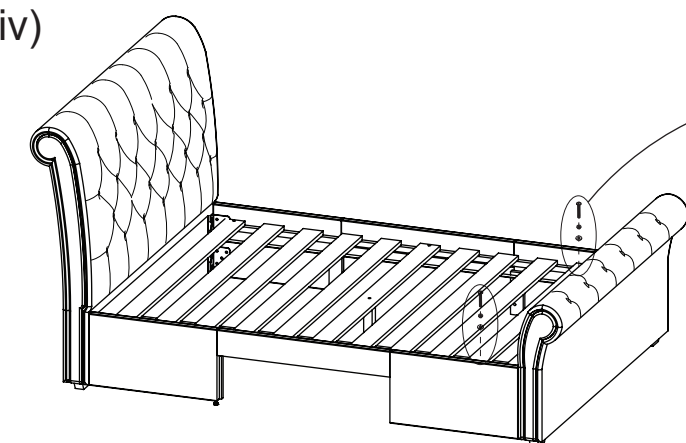
ii)



iii)

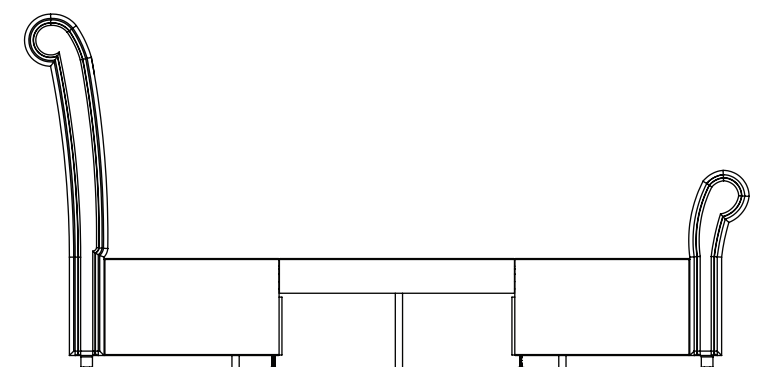
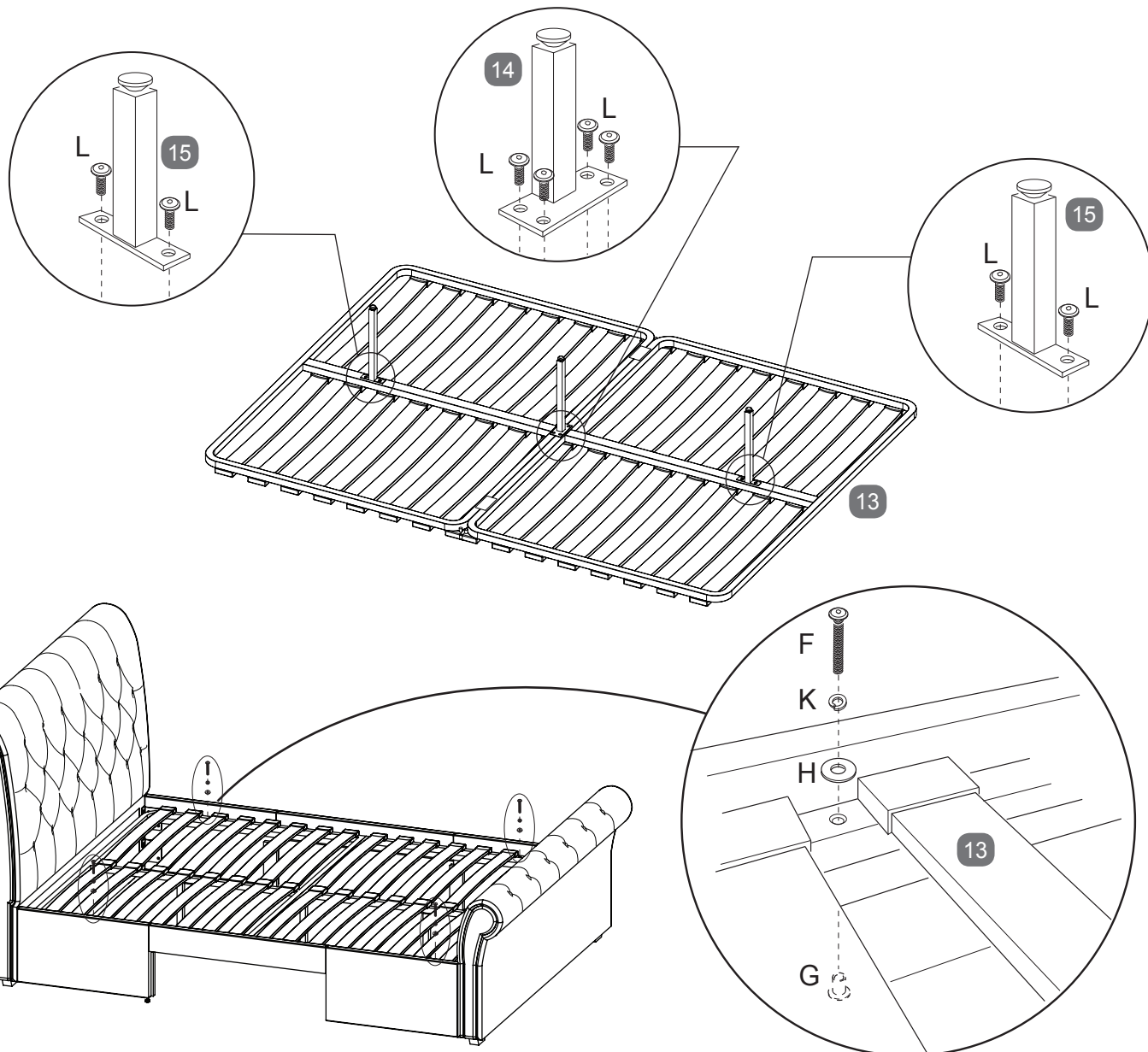
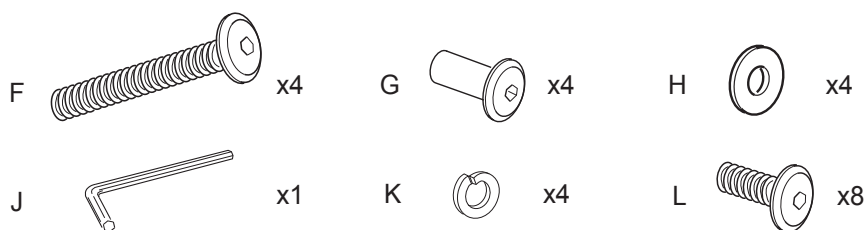


iv)



Fitting Sprung Slat Frame - Use Pack 'B'

Stage
4b

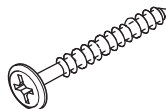


Stage

5

x2

M



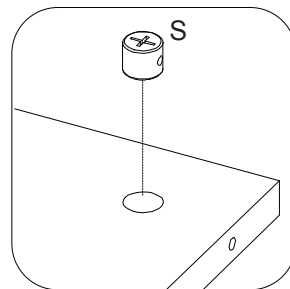
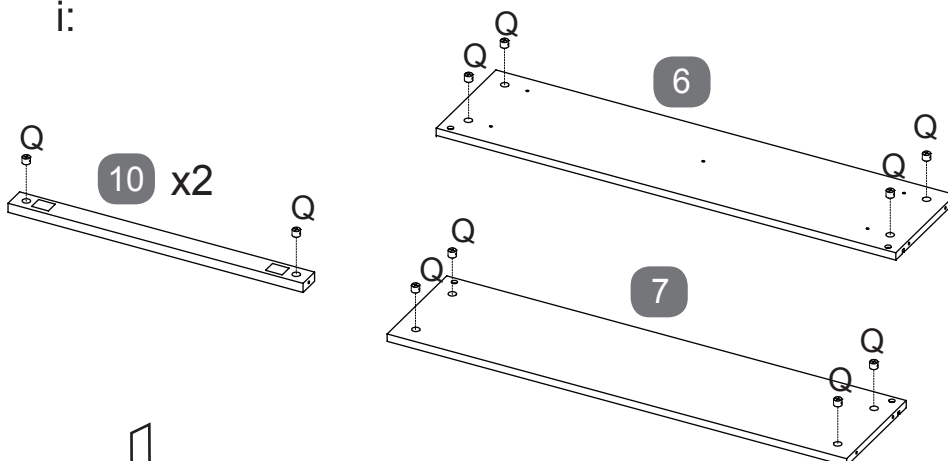
x24

Q



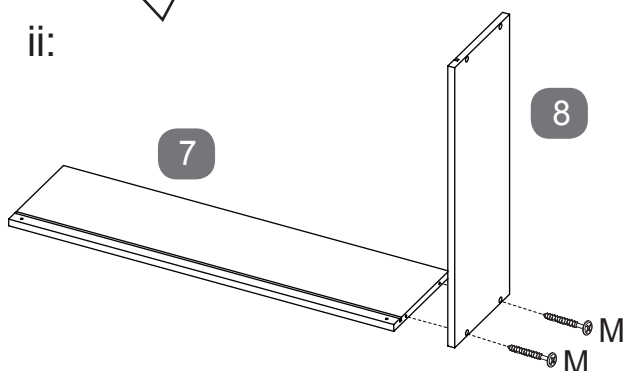
x24

i:

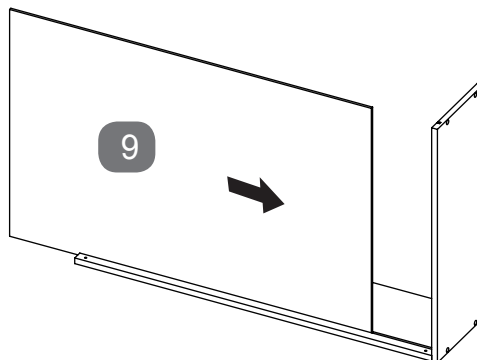


IMPORTANT:
MAKE SURE WHEN
FITTING THE NUTS
THAT THE HOLE IS IN
CORRECT ALIGNMENT
WITH THE HOLE IN THE
PANEL EDGE.

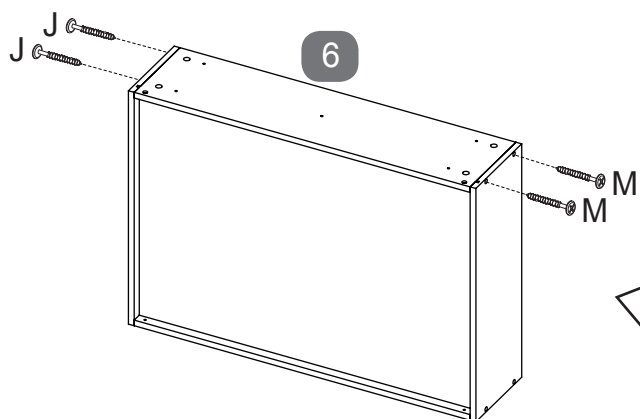
ii:



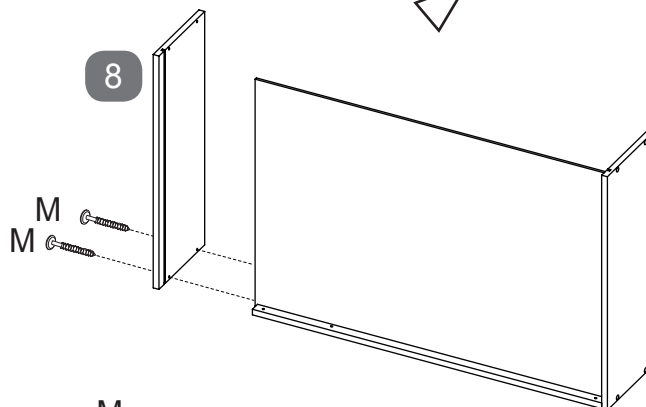
iii:



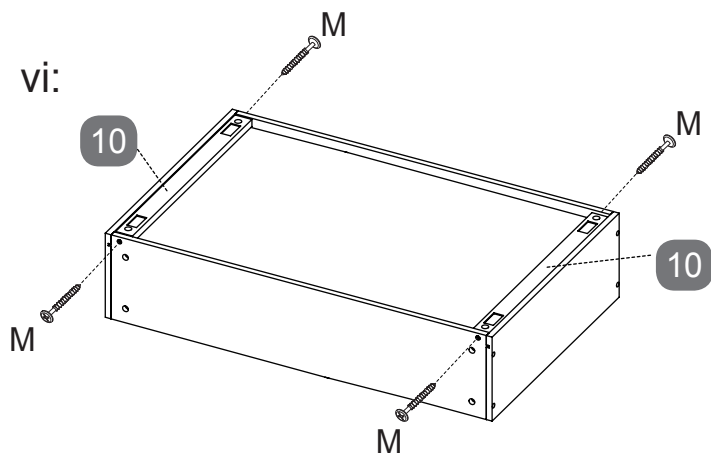
v:



iv:



vi:



Drawer Assembly - Use Pack 'C & D'

Stage
6

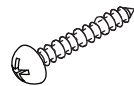
x2

N



x32

P

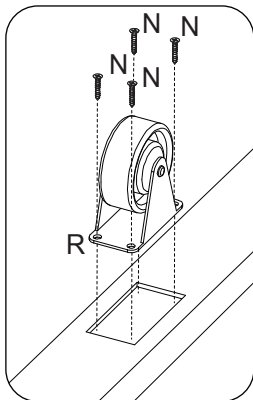
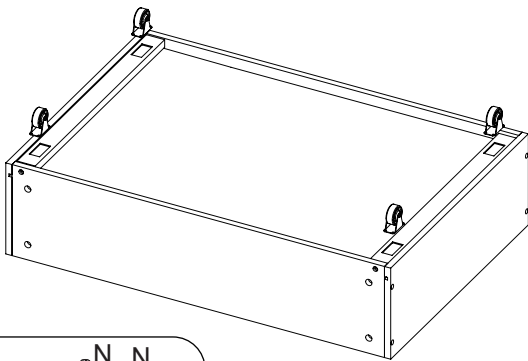


x10

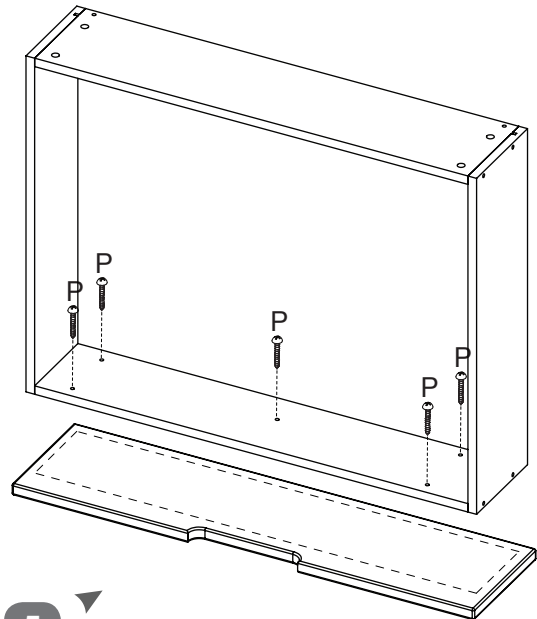
R



x8



Fit the assembled drawer to rear of Drawer Face Panel (5). Carefully follow the guide lines on inside face of the rear side.



5

Stage
7

SLIDE IN THE DRAWERS

