

# Dreams

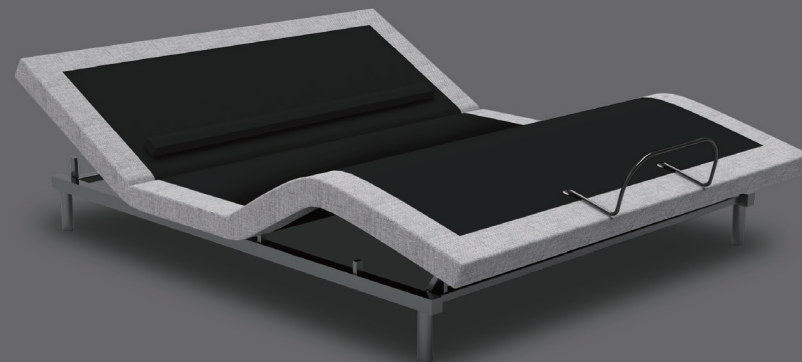
Love your bed

# Dreams

OWNERS MANUAL

Love your bed

SLEEPMOTION 400i SINGLE SIZE



THANK YOU

Thank you for choosing the Sleepmotion 400i bed from Dreams. You have made a sound investment in our high quality Sleepmotion 400i which will hopefully help you relax & sleep better for many years to come. Please take a few minutes to read through this guide which will aid with assembling the product and how to use the features and benefits on the Sleepmotion 400i.

WARNINGS

**IMPORTANT: PLEASE READ ALL SAFETY INSTRUCTIONS THOROUGHLY BEFORE USING THIS PRODUCT. PLEASE SAVE THESE INSTRUCTIONS IN A SAFE PLACE. FOR FUTURE REFERENCE.**

**ENSURE THIS PRODUCT IS PLACED ON A FLAT, CLEAN, DRY SURFACE.**

**ELECTRICAL SAFETY.**  
Always connect this product to a grounded surge protector and grounded standard 120-volt circuit wall outlet. DO NOT OPERATE THIS PRODUCT WHEN ANY OF THE CORDS OR ELECTRICAL UNIT IS DAMAGED. Keep all cords away from moving parts and any heated surfaces. FOR INDOOR USE ONLY. When moving or cleaning this product, turn off all electrical functions prior to unplugging from wall outlet.

**SMALL CHILDREN/PETS**  
Immediately dispose of all packaging materials as soon as the product is unpacked. DO NOT ALLOW CHILDREN OR PETS TO PLAY ON OR UNDER THE BED. CHILDREN SHOULD NOT OPERATE THIS PRODUCT WITHOUT ADULT SUPERVISION.

IN-HOME USE / HOSPITAL DISCLAIMER

This product is designed solely for in-home use. This product is not designed to use as a hospital bed and does not meet hospital standards. Do not use with oxygen equipment or near explosive/flammable gases.

WEIGHT RESTRICTIONS

Recommended weight restrictions for PowerBases:  
(all weights include the weight of the mattress and bedding)

This product will support the recommended weight limits when weight is distributed evenly across the base. This product is not designed to support or lift this amount in the head or foot sections alone. Consumers should not enter or exit the bed when any portion of it is in the raise position. Do not sit on the head or foot sections while in the raised position. Exceeding the recommended weight restrictions or other misuse of this product could damage the bed and void the warranty.

Weight Capacity: 355 kgs.

SOUND

Sounds does not exceed <70 DB.



Caution

When raising or lowering the bed, Do Not allow persons or animals to enter or place limbs in the area under the raised components OR When the bed is motion. Pressing any button on the remote control will stop the operation.

CARELESSNESS  
CAUSES FIRE

Batch No.

To comply with The Furniture and Furnishings  
(Fire) (Safety) Regulations:  
  
This article does not include a  
schedule 3 interliner  
  
All the foams, fillings and composites have been  
tested to ensure compliance with the relevant  
ignitability test. All covers and fillings have  
been tested to ensure that they are cigarette  
resistant. All covers have been tested to ensure  
that they are match resistant.  
  
Further details are available  
from your retailer.  
  
Fabric Content  
100% Polyester Fibre

WARNING  
DO NOT PLACE THIS ITEM OF  
FURNITURE ON A DAMP SURFACE  
AS STAINING MAY RESULT

## PRODUCT RATINGS

**IMPORTANT: USE THIS PRODUCT ONLY AS DESCRIBED IN THESE INSTRUCTIONS. DO NOT MODIFY ANY PARTS OR COMPONENTS.**

### MOTOR RATINGS

The Sleepmotion base motors are not designed to operate for more than two (2) continuous minutes within an eighteen (18) minute time period. Exceeding this rating will shorten the life of the motors, and will void the warranty.

### POWER RATINGS

**INPUT:** AC 100-240V-50/60HZ, 1.5 Amp

**OUTPUT:** DC 29V-2A

**FUSE:** 1.5A 250V

If a short circuit should occur, switch off and remove the plug from the wall. The customer should seek professional assistance from a qualified electrician. DO NOT open any of the motor components, alter or change any wiring, modify the base, or change the product in any way, as it will void the warranty.

### FCC COMPLIANCE

Operates on 2.4 GHz frequency transmitter.

This device complies with part 15 of the FCC Rules. Operation is subject to the following two conditions: (1) This device may not cause harmful interference, and (2) this device must accept any interference received, including interference that may cause undesired operation.

To comply with the FCC RF exposure requirements, no change to the antenna or the device is permitted. Any change to the antenna or the device could result in the device exceeding the RF exposure requirement and void users right to operate the device.

For any questions or concerns regarding this product please visit :

[www.dreams.co.uk/help](http://www.dreams.co.uk/help)

CONTENTS

This is a Sleepmotion base,which includes the functions of back up/down, lumbar up/down, foot up/down, back/foot massage, tv, anti-snore, zero gravity, memory Lock and flat. Also,it could be controlled by wireless remote .

Please prevent the children from playing or operating the Sleepmotion base alone.

Overview.....	1-2
Assembly / Remote Control .....	3-12
Test All Functions .....	13-14
Electronic Components Information .....	15-16
Warranty / Electronic Components .....	17- 18
Additional Trouble Shooting .....	19-22



OVERVIEW










STEP 1

Place the bed box in a desired location with the top of the box facing up.





STEP 2

Before discarding the packing materials, check to make sure all parts are included.  
All electronics and components are located in boxes under the base or attached to the frame.

**Note:** Due to the weight this product is a 2 person build, to prevent injury please make sure there are 2 people present when assembling this product.

A	Bed Base		1 pc	F	Legs		each 4 pcs
B	Retainer Bar		1 pc	G	Power Cord		1 pc
C	Transformer		1 pc	H	AAA Battery		2 pcs
D	Wireless Remote Control		1 pc	I	Extension Cord (connected to control box)		1 pc
E	Washer		4 pcs				

## ASSEMBLY

A	Bed Base		1 pc
E	Washer		4 pcs
F	Legs	 + 	each 4 pcs

There is a variable height option on the Sleepmotion 400i, either 6" or 9". If you would like 6" please just use the larger leg supplied.

If you would like 9" please connect the smaller leg (3") to the larger leg (6") before following the steps below.

### STEP 3

Place washer (E) on the leg (F), and then connect to bed base (A). Refer to image (i/ii/iii).

#### Note:

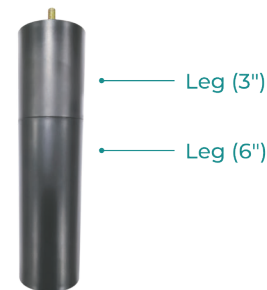
If you have purchased the Sleepmotion 400i as part of a bedframe please refer to the bed assembly instructions on what leg height to use.

The 3" leg should not be used individually.

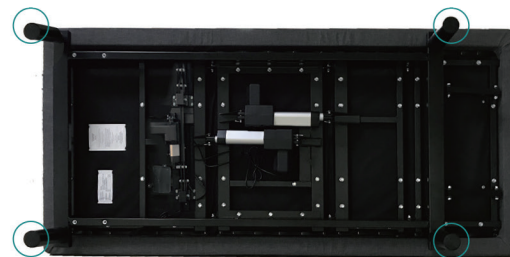
i



ii



iii



## ASSEMBLY

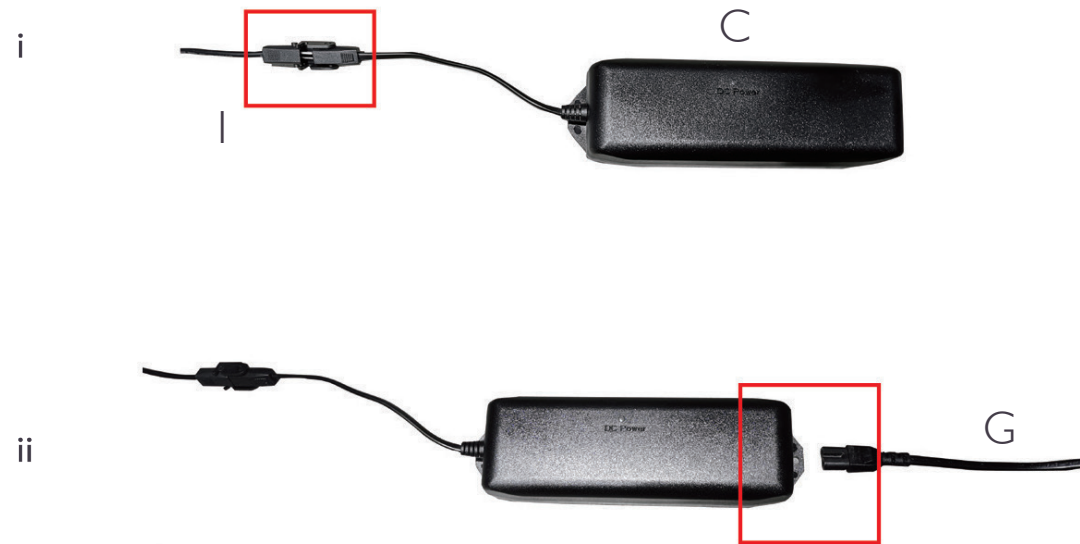
I	Extension Cord (connected to control box)		1 pc
C	Transformer		1 pc
G	Power Cord		1 pc

### STEP 4

Insert Extension Cord (I) into Transformer (C). Refer to image (i).

### STEP 5

Insert Power Cord (G) into Transformer (C). Refer to image (ii).



## REMOTE CONTROL

D Wireless Remote Control 1 pc

H AAA Battery 2 pcs



### OVERVIEW

All of the bed functions are controlled from the Remote Control (D). The Remote Control (D) comes with some pre-set positions. Refer to image (i) for a complete list of remote control functions.

### REMOTE CONTROL BATTERY INSTALLATION:

Remove the battery cover on the back of Remote Control (D). Insert the AAA Batteries (H).

Back Massage (short press)		Foot Massage (short press)
Massage Mode (short press)	MODE STOP	Stop (short press)
TV Position (short press)	TV ANTI SNORE	Anti-snore Position (short press)
Back up (long press)		Back down (long press)
Foot up (long press)		Foot down (long press)
Zero Gravity (short press)	ZG FLAT	Flat (short press)
Lumbar up (long press)		Lumbar down (long press)
Lock (long press)	LOCK M	Memory (short press)

i

Dreams

### For Lock button:

Lock: Hold LOCK for 3s until light flashes rapidly three times.

Unlock: Hold LOCK for 3s until light flashes slowly once.

**Note:** The ZG/TV/ANTI SNORE button shown are pre-programmed with the manufactures suggested bed positions. No programming is necessary by the user.

### Attention please:

Long press operation: Back up/ down, Foot up/ down, Lumbar up/ down, Lock buttons One press operation for other buttons.

PRESS ANY BUTTON ON THE REMOTE STOP THE MOTION

### Memory position setting way:

1. Adjust the back and foot to the position that you like.
2. Hold on "M" button for about 3 seconds, you will hear bleep sound.it's setted successfully.
3. After setting,just press"M" button once, it can reach to the memory position. If you want to reset to new memory position, just repeat the step above.

### About Massage:

There are three intensity (on Back/ Foot Massage on/ off buttons) and four modes for the massage.

## REMOTE CONTROL

### PARING SET UP

#### ONE REMOTE TO CONTROL ONE BED

1. Have to turn off the power till the green light of Transformer off, then plug in. Listen **one** beep, this indicates there is power to the control box.
2. Take the remote, press and hold the "Back Down" and "Foot Up" buttons simultaneously to sync within **60s**.

①**One** beep indicates pairing is successful.

②If there is **three** beeps, please repeat step 2 again.

You will hear **one** beep indicating pairing is successful.

Note: It comes with pre-paired. Do not need extra pairing for the new base.

i

Foot up  
(long press)

Back down  
(long press)



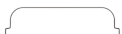
## ASSEMBLY

A Bed Base



1 pc

B Retainer Bar



1 pc

### STEP 6

Turn over the whole base with legs standing on the floor, this is a 2 man lift. Please refer to image (i). Hold the metal frame when turning over the base, do not hold the upholstered frame only.

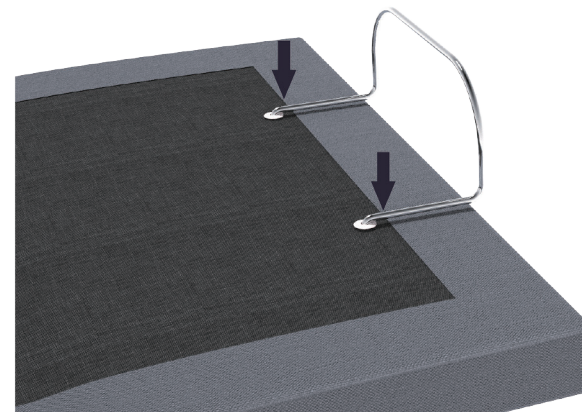
### STEP 7

Insert the retainer bar (B) into 2 holes on the foot end of Bed Base (A). Refer to image (ii).

i



ii



## TEST ALL FUNCTIONS

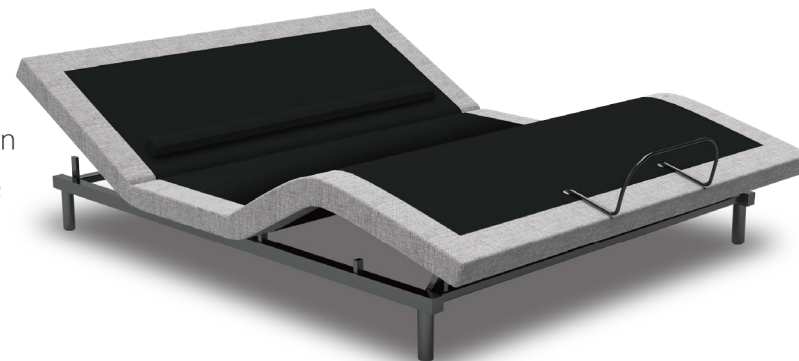
### OVERVIEW

To ensure proper setup, use remote and test all functions for three (3) seconds

#### **Note :**

If you have purchased the Sleepmotion 400i as part of a bedframe, please now refer to the bed assembly instruction.  
If you have purchased a Sleepmotion Headboard please assemble to the bed at this point (the assembly instructions and fixing kit for your headboard can be found in the zipped compartment at the back of the headboard).

Back Up  
Back Down  
Foot Up  
Foot Down  
Lumbar Up  
Lumbar Down  
Back Massage  
Foot Massage  
Zero Gravity  
Flat  
Anti-snore  
TV Position  
Memory  
Lock

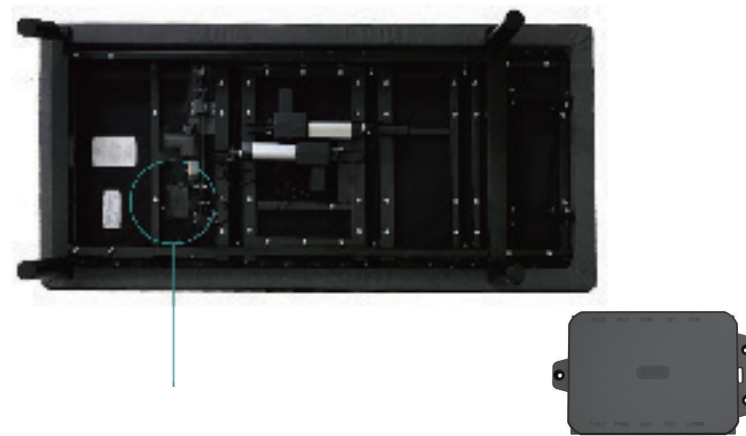


## ELECTRONIC COMPONENTS INFORMATION

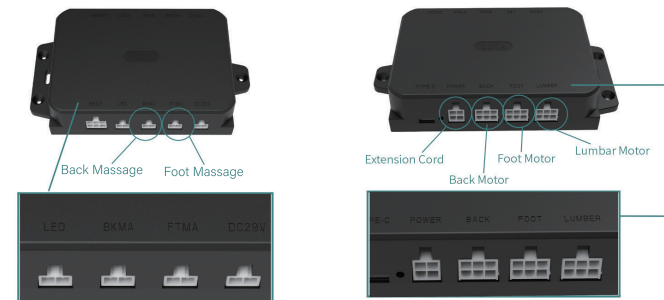
### OVERVIEW

Electronic inputs is crucial important for the adjustable bed to function well.  
Please follow the instruction showed in image (i) / (ii) to connect the input cables.

i



ii





WARRANTY

ELECTRIC COMPONENTS

1- Year Full Warranty

Dreams will replace any electronic components if components fail during the 1 year from the date of delivery.

Maintenance and repair are to be only carried out by dreams or their recommended representatives.

ELECTRONIC COMPONENTS

C	Transformer		1pc	K	Back Motor		1pc
D	Wireless Remote Control		1pc	L	Foot Motor		1pc
G	Power Cord		1pc	M	Lumbar Motor		1pc
I	Extension Cord		1pc	N	Massage Motor		2pcs
J	Control Box		1pc				

## ADDITIONAL TROUBLE SHOOTING

### IF ONE OR MORE FUNCTIONS OF THE BED HAVE STOPPED WORKING

Turn off and unplug, check under the bed base to verify the wired connections are secure and there are no cords or bedding obstructing the movement of the base.

### THE REMOTE CONTROL WILL NOT OPERATE THE BED FUNCTIONS

Make sure the two ( 2 ) AAA batteries are installed correctly in the remote control. Ensure the remote control is successfully paired with the control box on the bed.

### NO FUNCTIONS ON THE BED WILL OPERATE

Check to ensure the power cord is properly connected. Unplug the base for 10 mins to reset the electronic components. Plug base into a different electrical outlet, or test current outlet with another working appliance. A grounded electrical surge protector is recommended with use of this product.

FOR FURTHER ASSISTANCE CONTACT : [www.dreams.co.uk/help](http://www.dreams.co.uk/help)

Name of Manufacturer : DREAMS  
Address of Manufacturer : Knaves Beech, Loudwater, High Wycombe,  
HP10 9YU, United Kingdom.  
Model / Designation : Electrically Actuated Adjustable Bed  
Type : 400i  
Year of Manufacture : 2025

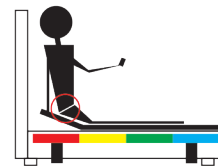


## Sleepmotion Base Correct Usage Guidelines

To stop any potential damage to your sleepmotion bed/motors please make sure you follow the below guidelines :

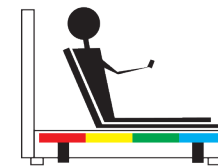
1. When operating the back rise please make sure you are not sitting on the back section (image1). Your weight needs to be distributed in the laying position as below (image2).

(image1)



Back  
lumbar  
Leg  
Foot

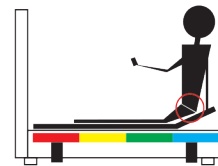
(image2)



Back  
lumbar  
Leg  
Foot

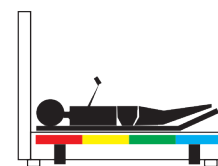
2. When operating the foot rise please make sure you are not sitting on the foot section (image 3). Your weight needs to be distributed in the laying position as below (image 4).

(image3)



Back  
lumbar  
Leg  
Foot

(image4)



Back  
lumbar  
Leg  
Foot

NOTES:

[illegible]

NOTES:

This image shows a single sheet of white paper with horizontal ruling lines. The lines are evenly spaced and run across the width of the page. There are no margins, text, or other markings on the paper.